

BURLINGTON, VERMONT

AL-70 (FAA)

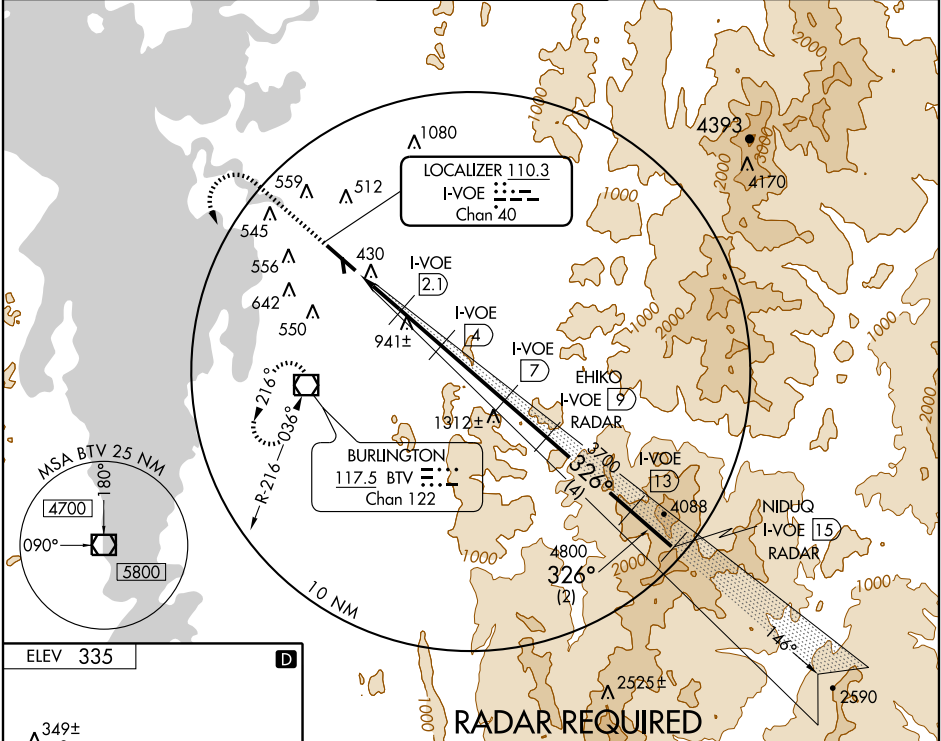
LOC/DME I-VOE 110.3 Chan 40	APP CRS 326°	Rwy ldg TDZE Apt Elev	7820 335 335
---	------------------------	-----------------------------	---

ILS/DME RWY 33

BURLINGTON INTL (BTV)

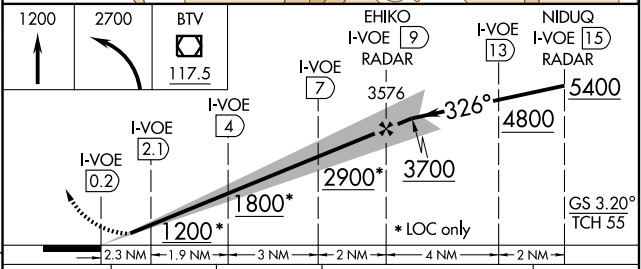
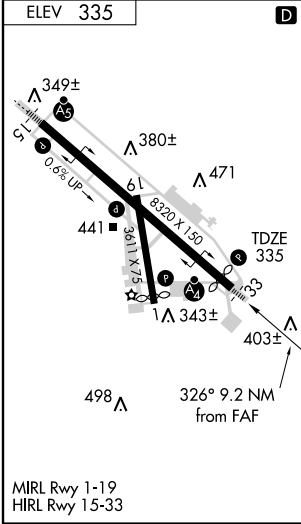
Procedure NA when control tower closed.
MALSF
MISSED APPROACH: Climb to 1200, then climbing left turn to 2700 direct BTV VOR/DME and hold.

ATIS 123.8 269.9	BURLINGTON APP CON * 121.1 278.8	BURLINGTON TOWER * 118.3 (CTAF) 0 257.8	BURLINGTON RADIO 122.6 255.4	GND CON 121.9 348.6
----------------------------	--	---	--	-------------------------------



NE-1, 22 OCT 2009 to 19 NOV 2009

NE-1, 22 OCT 2009 to 19 NOV 2009



CATEGORY	A	B	C	D	E
S-ILS 33	535/40	200 (200-¾)	585/50	250 (300-1)	NA
S-LOC 33	820/50	485 (500-1)	820/60 485 (500-1½)	820-1½ 485 (500-1½)	820-1¾ 485 (500-1¾)
CIRCLING	860-1	525 (600-1)	860-1½ 525 (600-1½)	1000-2 665 (700-2)	1300-3 965 (1000-3)

BURLINGTON, VERMONT
Orig-E 08325

44°28'N - 73°09'W

ILS/DME RWY 33