


RNAV (GPS) RWY 36

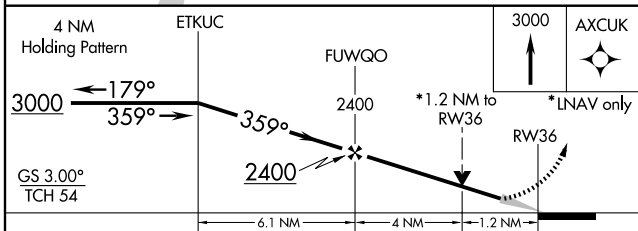
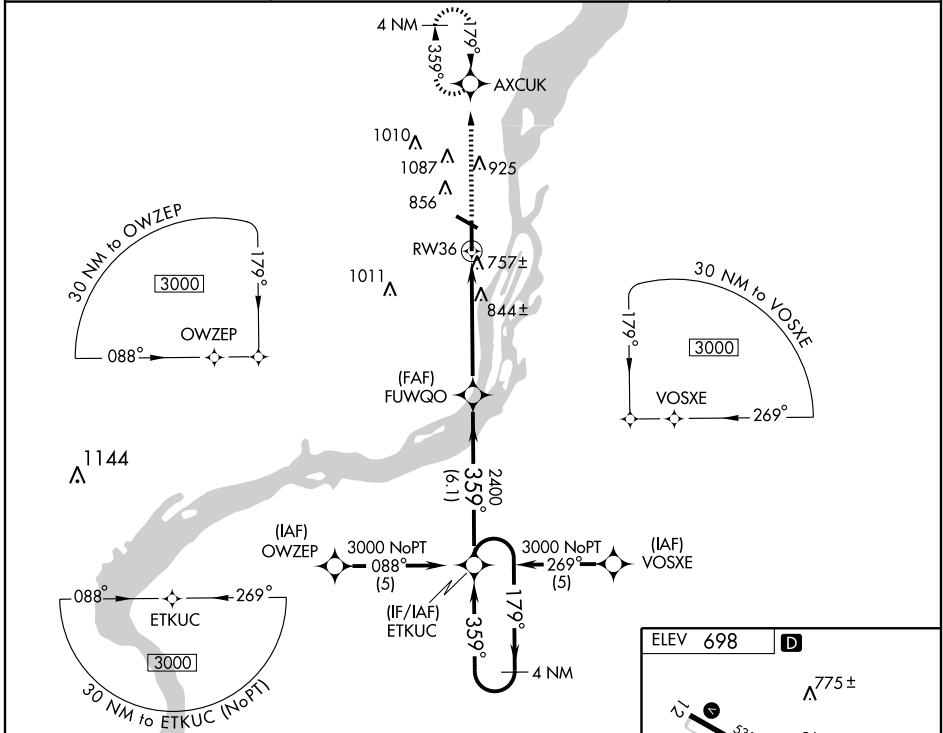
BURLINGTON/SOUTHEAST IOWA RGNL (B.R.L.)

WAAS CH 42711 W36A	APP CRS 359°	Rwy Idg TDZE Apt Elev	6102 694 698
--	------------------------	-----------------------------	---

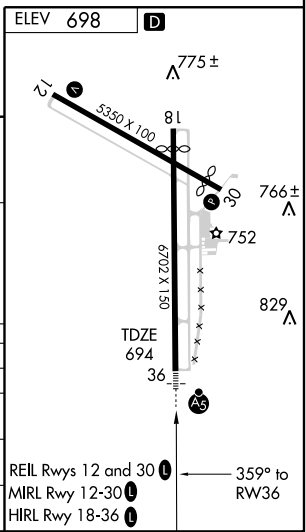
⚠ For uncompensated Baro-VNAV systems, LNAV/VNAV NA below -16°C (4°F) or above 54°C (130°F). DME/DME RNP-0.3 NA.
⚠ When local altimeter setting not received, use Fort Madison altimeter setting and increase all DA 31 feet, all MDA 40 feet.
 VDP and Baro-VNAV NA when using Fort Madison altimeter setting.

MALSRL

 MISSED APPROACH: Climb to 3000 direct AXCUC and hold, continue climb-in-hold to 3000.

ASOS 118.025	CHICAGO CENTER 135.6 370.95	UNICOM 123.0 (CTAF)
------------------------	---------------------------------------	-------------------------------



CATEGORY	A	B	C	D
LPV DA	894-1/2	200 (200-1/2)		NA
LNAV/VNAV DA	1026-3/4	332 (400-3/4)		NA
LNAV MDA	1100-1/2	406 (500-1/2)	1100-3/4 406 (500-3/4)	NA
CIRCLING	1160-1	462 (500-1)	1160-1 1/2 462 (500-1 1/2)	NA



NC-3, 22 OCT 2009 to 19 NOV 2009

NC-3, 22 OCT 2009 to 19 NOV 2009