


BURLINGTON, IOWA

AL-69 (FAA)

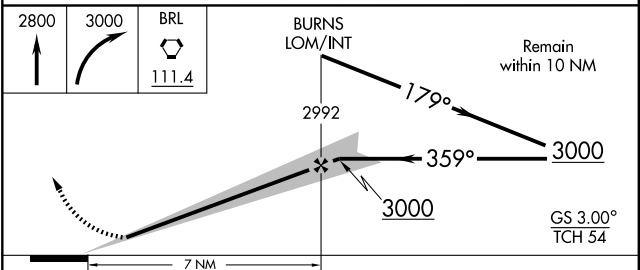
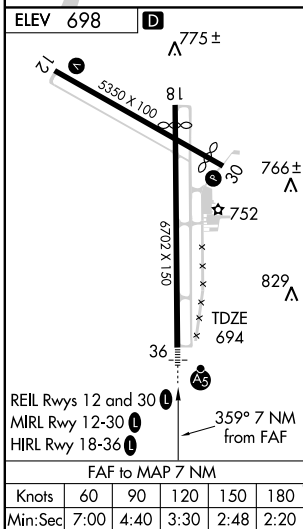
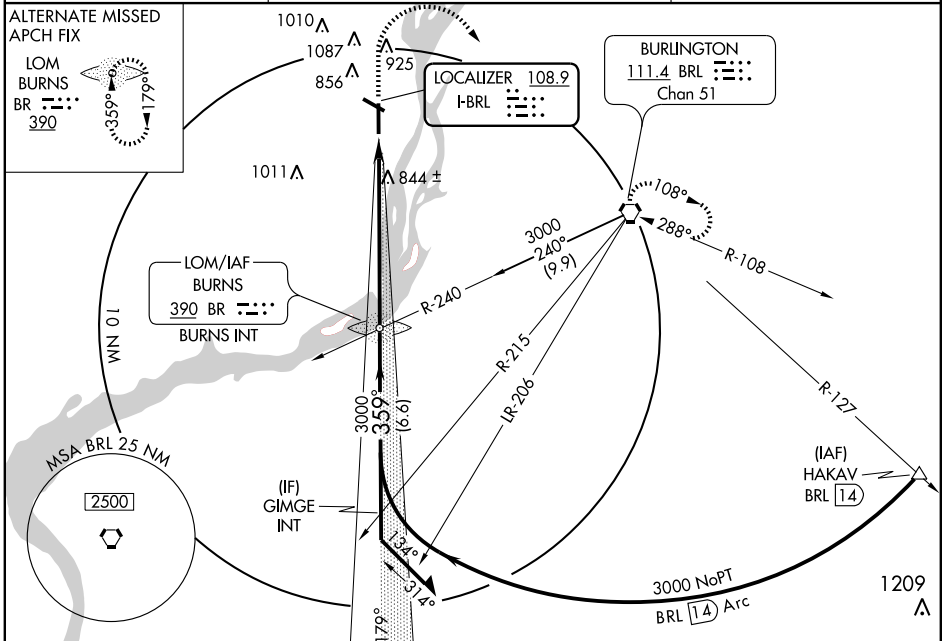
LOC I-BRL 108.9	APP CRS 359°	Rwy Idg TDZE Apt Elev	6102 694 698
---------------------------	------------------------	-----------------------------	---

ILS or LOC RWY 36

BURLINGTON/SOUTHEAST IOWA RGNL (B.R.L.)

<p>⚠ When local altimeter setting not received, use Fort Madison altimeter setting and increase DA 31 feet, all MDA 40 feet, and Cat D Circling visibility ¼ mile.</p>	<p>MALSR </p>	<p>MISSED APPROACH: Climb to 2800 then climbing right turn to 3000 direct BRL VORTAC and hold.</p>
---	---	--

ASOS 118.025	CHICAGO CENTER 135.6 370.95	UNICOM 123.0 (CTAF) 1
------------------------	---------------------------------------	--



CATEGORY	A	B	C	D
S-ILS 36	894-½ 200 (200-½)			
S-LOC 36	1140-½ 446 (500-½)	1140-¾ 446 (500-¾)	1140-1 446 (500-1)	1140-1 446 (500-1)
CIRCLING	1160-1 462 (500-1)	1160-1½ 462 (500-1½)	1400-2¼ 702 (800-2¼)	1400-2¼ 702 (800-2¼)

BURLINGTON, IOWA
Amdt 10 09295

BURLINGTON/SOUTHEAST IOWA RGNL (B.R.L.)
40° 47'N - 91° 08'W

ILS or LOC RWY 36

NC-3, 22 OCT 2009 to 19 NOV 2009

NC-3, 22 OCT 2009 to 19 NOV 2009