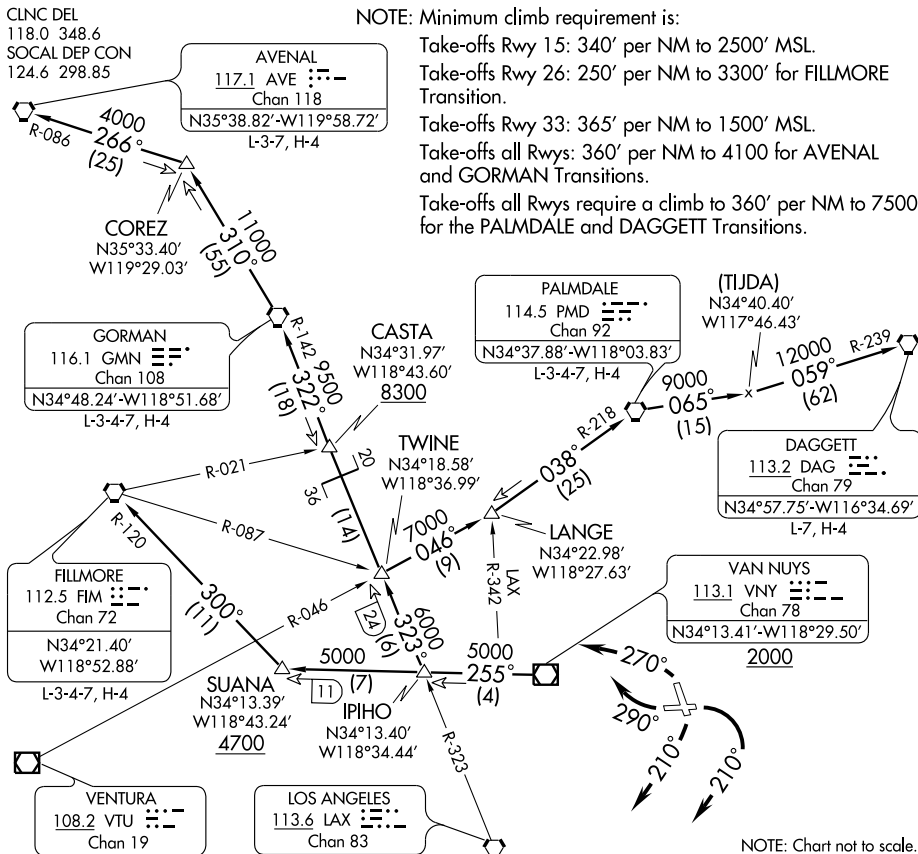


VAN NUYS SEVEN DEPARTURE

SL-67 (FAA)

NOTE: Minimum climb requirement is:

- Take-offs Rwy 15: 340' per NM to 2500' MSL.
- Take-offs Rwy 26: 250' per NM to 3300' for FILLMORE Transition.
- Take-offs Rwy 33: 365' per NM to 1500' MSL.
- Take-offs all Rwys: 360' per NM to 4100 for AVENAL and GORMAN Transitions.
- Take-offs all Rwys require a climb to 360' per NM to 7500' for the PALMDALE and DAGGETT Transitions.



NOTE: Chart not to scale.

SW-3, 22 OCT 2009 to 19 NOV 2009

SW-3, 22 OCT 2009 to 19 NOV 2009

DEPARTURE ROUTE DESCRIPTION

TAKE-OFF RUNWAY 8: Turn right heading 210° as soon as practicable after take-off. Expect vector to VNY VOR/DME. Thence via (transition) or (assigned route).
NOTE: Runway 8 departures not authorized when weather conditions are less than 2100' ceiling and 3 miles prevailing visibility.

TAKE-OFF RUNWAY 15: Turn right heading 210° as soon as practicable after take-off. Expect vector to VNY VOR/DME, then via (transition) or (assigned route).

TAKE-OFF RUNWAY 26: Turn right heading 290° as soon as practicable after take-off for vector to VNY VOR/DME, then via (transition) or (assigned route).

TAKE-OFF RUNWAY 33: Turn left heading 270° as soon as practicable after take-off for vector to VNY VOR/DME, then via (transition) or (assigned route).

- AVENAL TRANSITION (VNY7.AVE)
- DAGGETT TRANSITION (VNY7.DAG)
- FILLMORE TRANSITION (VNY7.FIM)
- GORMAN TRANSITION (VNY7.GMN)
- PALMDALE TRANSITION (VNY7.PMD)