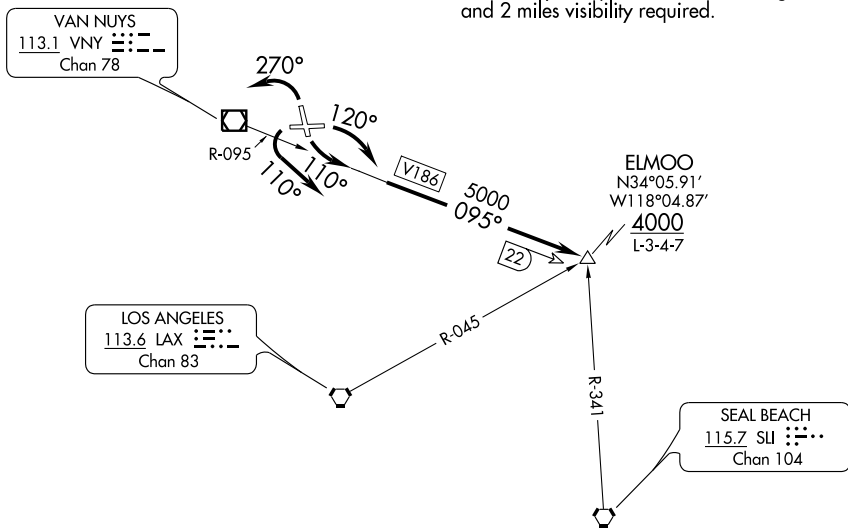


ATIS 134.5
CLNC DEL
118.0 348.6
GND CON
123.9 348.6
SOCAL DEP CON
135.05 317.5

NOTE: This SID requires a minimum climb rate to MEA as follows:

- Take-offs Rwy 8, Cats A and B, 480' per NM.
Cats C and D, 650' per NM.
- Take-offs Rwy 15, 340' per NM.
- Take-offs Rwy 26, 250' per NM.
- Take-offs Rwy 33, 390' per NM.

NOTE: For Runway 8 departures, 2100 ceiling and 2 miles visibility required.



NOTE: Chart not to scale.

DEPARTURE ROUTE DESCRIPTION

TAKE-OFF RUNWAY 8: Turn right heading 120° as soon as practicable after take-off, intercept and proceed via VNY R-095 to ELMOO INT. Then via (assigned route).

TAKE-OFF RUNWAY 15: Turn left heading 110° as soon as practicable after take-off, intercept and proceed via VNY R-095 to ELMOO INT. Then via (assigned route).

TAKE-OFF RUNWAY 26: Turn left heading 110° as soon as practicable after take-off for vector to VNY R-095. Then via VNY R-095 to ELMOO INT. Then via (assigned route).

TAKE-OFF RUNWAY 33: Turn left heading 270° as soon as practicable after take-off for vector to VNY R-095. Then via VNY R-095 to ELMOO INT. Then via (assigned route).