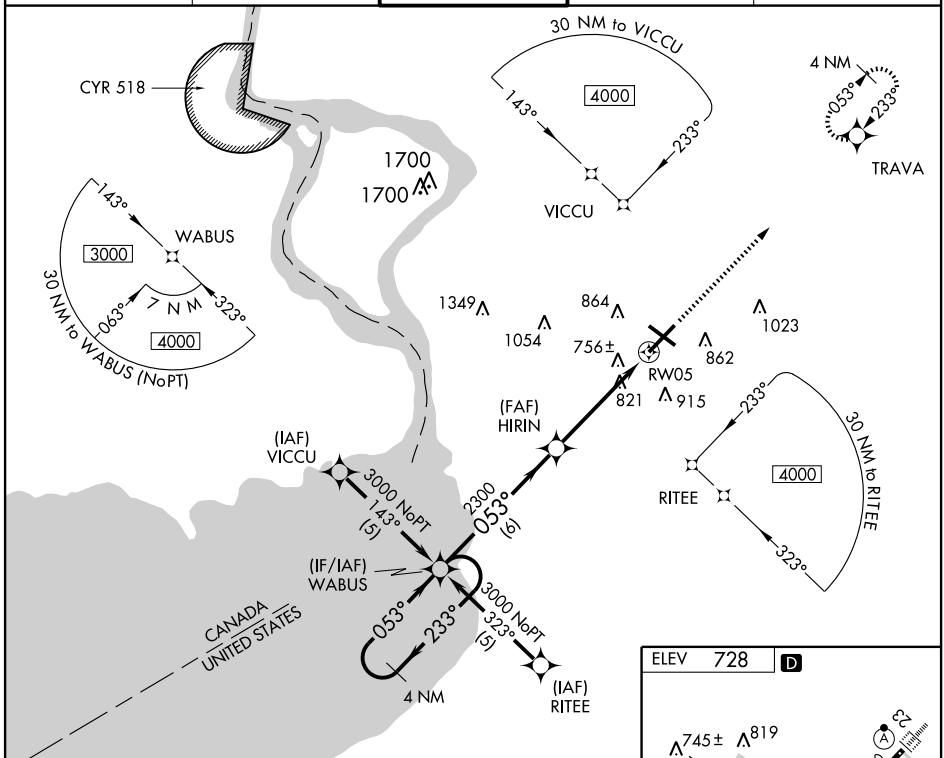


WAAS CH 70311 W05A	APP CRS 053°	Rwy Idg 7757 TDZE 706 Apt Elev 728
--	------------------------	---

RNAV (GPS) RWY 5

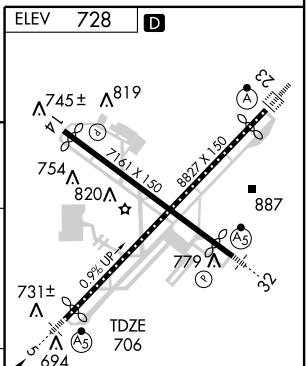
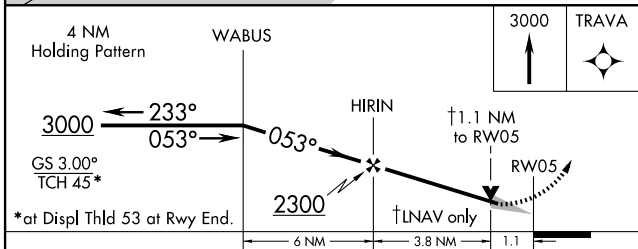
BUFFALO NIAGARA INTL (BUF)

DME/DME RNP-0.3 NA. Baro-VNAV NA below -16°C (4°F). For inoperative MALSR increase LPV all Cats visibility to RVR 5000, increase LNAV Cat D visibility to RVR 6000.		MALSR 	MISSED APPROACH: Climb to 3000 direct TRAVA and hold.	
ATIS 135.35	BUFFALO APP CON 126.15 263.125	BUFFALO TOWER 120.5 257.8	GND CON 133.2 257.8	CLNC DEL 124.7 257.8



NE-2, 22 OCT 2009 to 19 NOV 2009

NE-2, 22 OCT 2009 to 19 NOV 2009



CATEGORY	A	B	C	D
LPV DA		973/24	267 (300-½)	
LNAV/VNAV DA		1026/40	320 (400-¾)	
LNAV MDA		1080/24	374 (400-½)	1080/50 374 (400-1)
CIRCLING	1200-1¼	472 (500-1¼)	1200-1½ 472 (500-1½)	1280-2 552 (600-2)

REIL Rwy 14
TDZ/CL Rwy 5 and 23
HIRL Rwy 5-23 and 14-32