

RNAV (GPS) RWY 14

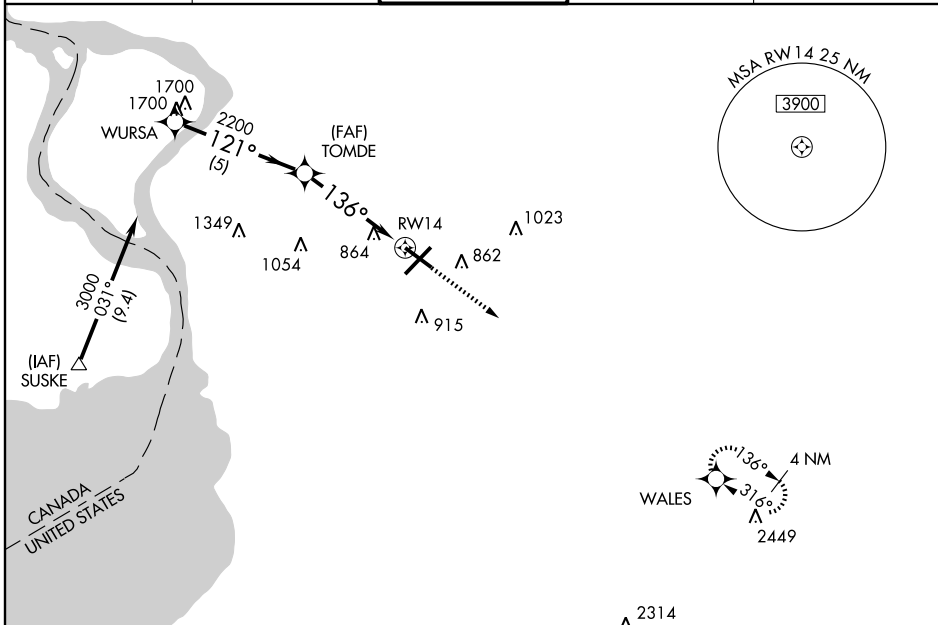
BUFFALO NIAGARA INTL (BUF)

APP CRS	Rwy Idg	6121
136°	TDZE	711
	Apt Elev	728

▽ GPS or RNP-0.3 required.
△ NA DME/DME RNP-0.3 NA.
 No Arrival at SUSKE on V2-43 westbound.

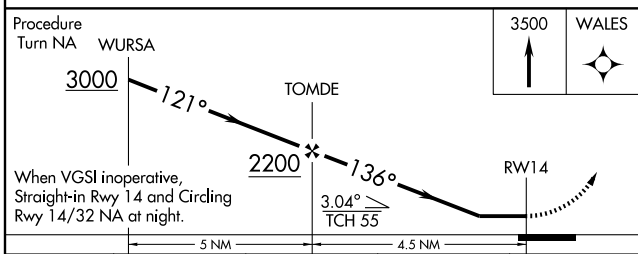
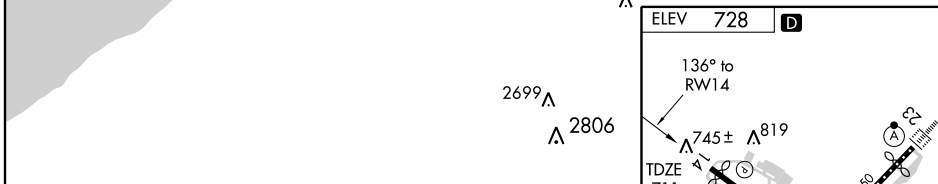
MISSED APPROACH: Climb to 3500 direct WALES WP and hold.

ATIS 135.35	BUFFALO APP CON 126.15 263.125	BUFFALO TOWER 120.5 257.8	GND CON 133.2 257.8	CLNC DEL 124.7 257.8
-----------------------	--	-------------------------------------	-------------------------------	--------------------------------

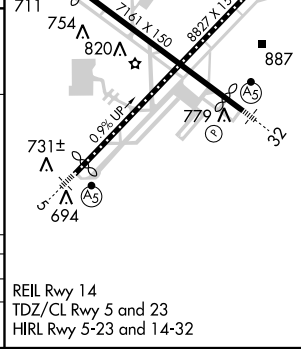


NE-2, 22 OCT 2009 to 19 NOV 2009

NE-2, 22 OCT 2009 to 19 NOV 2009



CATEGORY	A	B	C	D
LNAV MDA	1120-1	409 (400-1)	1120-1¼	409 (400-1¼)
CIRCLING	1200-1	472 (500-1)	1200-1½	1280-2
			472 (500-1½)	552 (600-2)



REIL Rwy 14
 TDZ/CL Rwy 5 and 23
 HIRL Rwy 5-23 and 14-32