

BUFFALO, NEW YORK

AL-65 (FAA)

ILS or LOC RWY 23

BUFFALO NIAGARA INTL (BUF)

LOC I-BUF 111.3	APP CRS 233°	Rwy Idg TDZE Apt Elev	8102 728 728
---------------------------	------------------------	-----------------------------	---

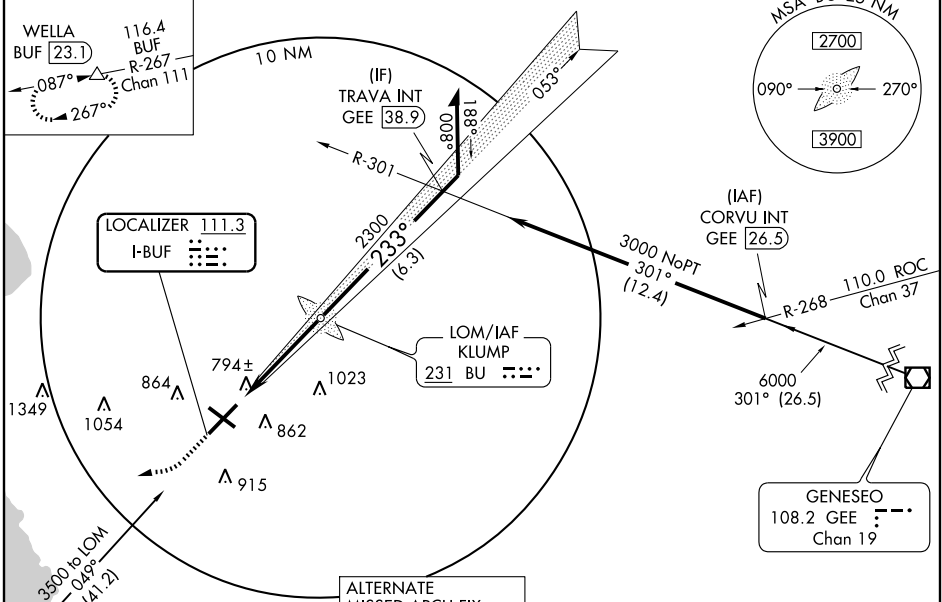
▽ For inoperative ALSF, increase S-LOC 23 Cat D visibility to RVR 5000.



MISSED APPROACH: Climb to 2300 then climbing right turn to 3000 via heading 300° and BUF R-267 to WELLA Int/BUF 23.1 DME and hold.

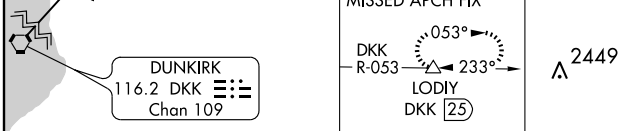
ATIS 135.35	BUFFALO APP CON 126.15 263.125	BUFFALO TOWER 120.5 257.8	GND CON 133.2 257.8	CLNC DEL 124.7 257.8
-----------------------	--	-------------------------------------	-------------------------------	--------------------------------

MISSED APCH FIX

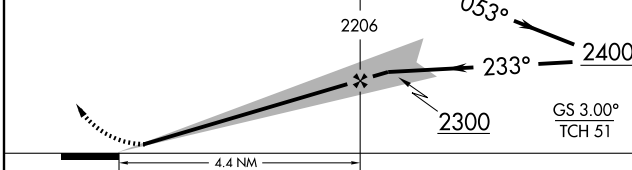


NE-2, 22 OCT 2009 to 19 NOV 2009

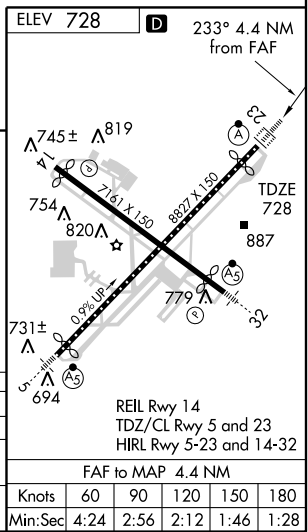
NE-2, 22 OCT 2009 to 19 NOV 2009



2300	3000	Hdg 300° BUF R-267 116.4	WELLA △ BUF 23.1
------	------	--------------------------------	------------------------



CATEGORY	A	B	C	D
S-ILS 23		928/18	200 (200-½)	
S-LOC 23		1060/24	332 (400-½)	1060/40 332 (400-¾)
CIRCLING	1200-1	472 (500-1)	1200-1 ½ 472 (500-1 ½)	1280-2 552 (600-2)



BUFFALO, NEW YORK
Amdt 29 09127

42°56'N - 78°44'W

BUFFALO NIAGARA INTL (BUF)

ILS or LOC RWY 23

FAF to MAP 4.4 NM					
Knots	60	90	120	150	180
Min:Sec	4:24	2:56	2:12	1:46	1:28