

BROWNSVILLE, TEXAS

AL-61 (FAA)

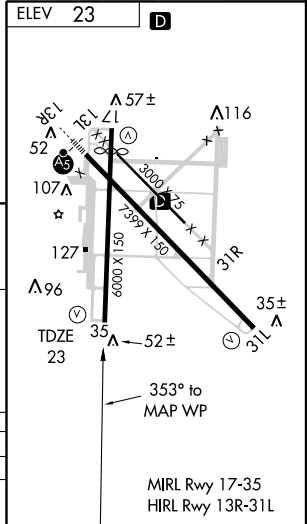
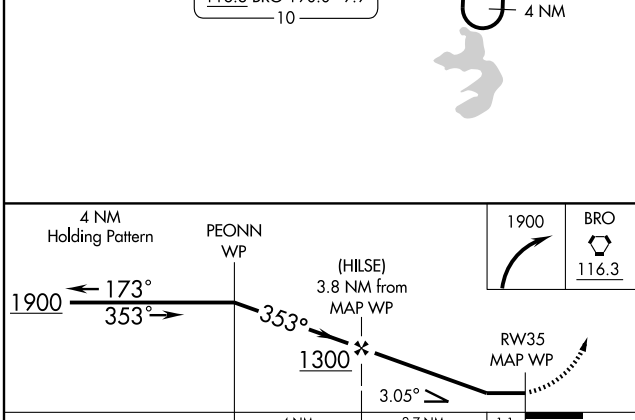
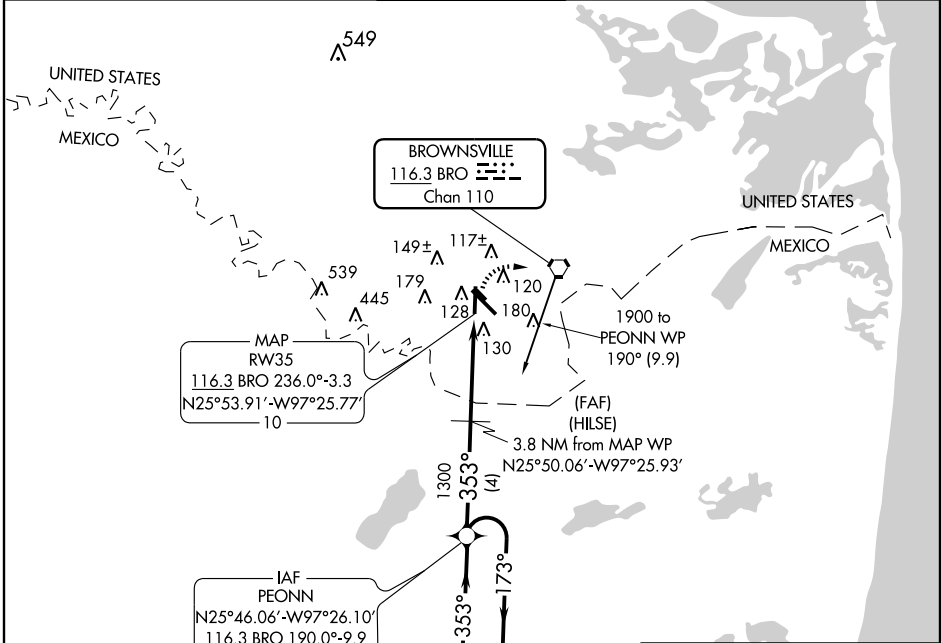
VORTAC BRO 116.3 Chan 110	APP CRS 353°	Rwy Idg TDZE 23 Apt Elev 23	6000
---	------------------------	---	-------------

VOR/DME RNAV or GPS RWY 35

BROWNSVILLE/SOUTH PADRE ISLAND INTL (BRO)

Night straight in minimums not authorized when BRO tower closed. MISSED APPROACH: Climbing right turn to 1900 direct BRO VORTAC.

ATIS 128.55	VALLEY APP CON 119.5 257.6	BROWNSVILLE TOWER * 118.9 (CTAF) 239.3	GND CON 121.9	UNICOM 122.95
-----------------------	--------------------------------------	---	-------------------------	-------------------------



	4 NM		2.7 NM		1.1	
CATEGORY	A	B	C	D		
S-35	440-1	417 (500-1)	440-1¼	417 (500-1¼)		
CIRCLING	440-1 417 (500-1)	480-1 457 (500-1)	480-1½ 457 (500-1½)	580-2 557 (600-2)		

BROWNSVILLE, TEXAS
Amdt 3 09183

25°54'N-97°26'W

BROWNSVILLE/SOUTH PADRE ISLAND INTL (BRO)

VOR/DME RNAV or GPS RWY 35

SC-3, 22 OCT 2009 to 19 NOV 2009

SC-3, 22 OCT 2009 to 19 NOV 2009