

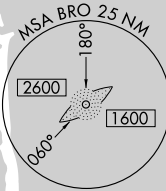
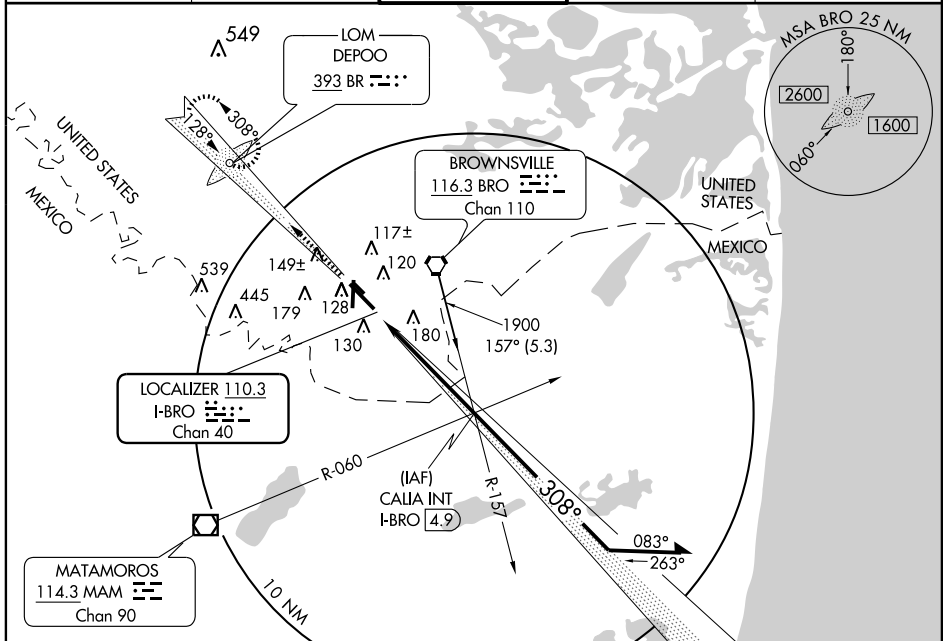
# LOC BC RWY 31L

BROWNSVILLE/SOUTH PADRE ISLAND INTL (BRO)

LOC I-BRO <b>110.3</b> Chan 40	APP CRS <b>308°</b>	Rwy Idg TDZE Apt Elev	<b>7399</b> <b>20</b> <b>22</b>
--------------------------------------	------------------------	-----------------------------	---------------------------------------

**▲** MISSED APPROACH: Climb to 1900 direct BR LOM and hold.

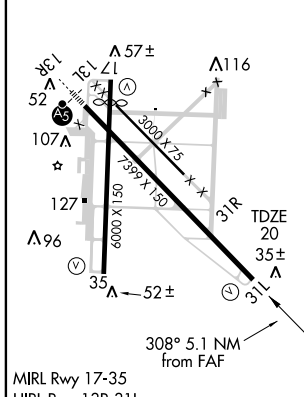
ATIS <b>128.55</b>	VALLEY APP CON <b>119.5 257.6</b>	BROWNSVILLE TOWER★ <b>118.9 (CTAF) 239.3</b>	GND CON <b>121.9</b>	UNICOM <b>122.95</b>
-----------------------	--------------------------------------	---	-------------------------	-------------------------



SC-3, 22 OCT 2009 to 19 NOV 2009

SC-3, 22 OCT 2009 to 19 NOV 2009

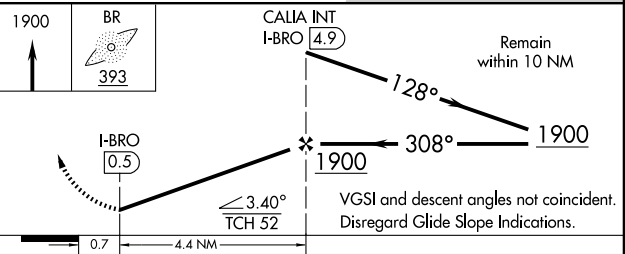
ELEV 22 **D**



MIRL Rwy 17-35  
HIRL Rwy 13R-31L

FAF to MAP 4.4 NM					
Knots	60	90	120	150	180
Min:Sec	4:24	2:56	2:12	1:46	1:28

## BACK COURSE



CATEGORY	A	B	C	D
S-31L		340-1	320 (400-1)	
CIRCLING	440-1 418 (500-1)	480-1 458 (500-1)	480-1½ 458 (500-1½)	580-2 558 (600-2)