


VOR/DME BZN 112.4 Chan 71	APP CRS 101°	Rwy Idg 8994 TDZE 4439 Apt Elev 4474
--	------------------------	---

VOR RWY 12

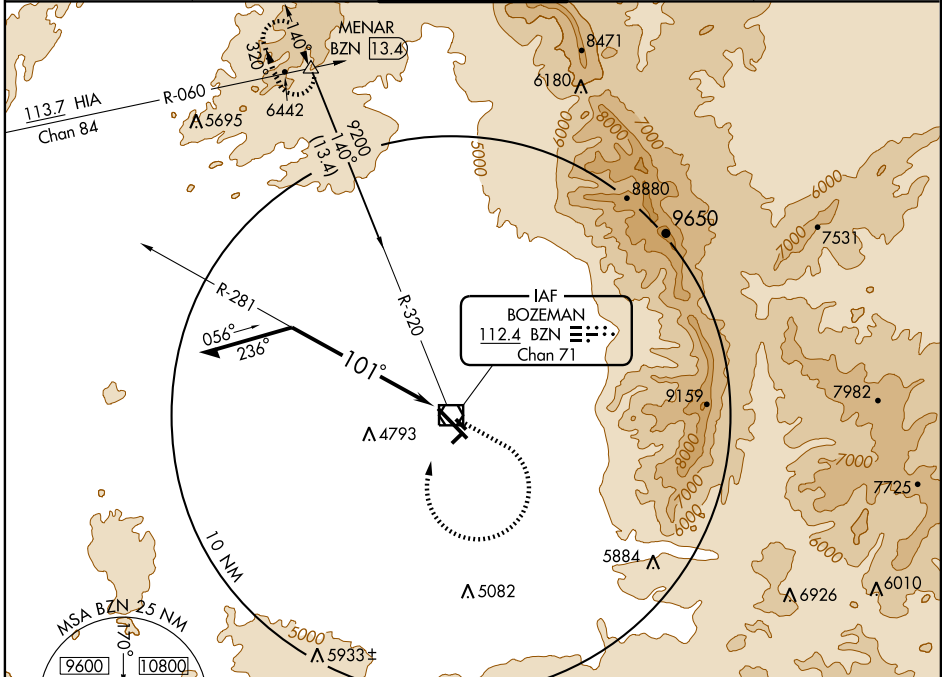
BOZEMAN/GALLATIN FIELD (BZN)

⚠ Inoperative table does not apply.

MALSR


MISSED APPROACH: Climb to 5300, then climbing right turn to 9200 via heading 350° to intercept BZN R-320, then via BZN R-320 to MENAR Int and hold.

ATIS 135.425	SALT LAKE CENTER 132.4 338.3	BOZEMAN TOWER* 118.2 (CTAF) 0	GND CON 121.8	UNICOM 122.95
------------------------	--	--	-------------------------	-------------------------



NW-1, 22 OCT 2009 to 19 NOV 2009

NW-1, 22 OCT 2009 to 19 NOV 2009



Remain within 10 NM

*VOR/DME

5300	9200	BZN R-320 112.4	MENAR
------	------	-----------------	-------

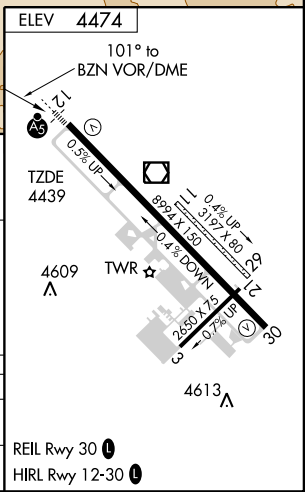
6200

281°

101°

350°

*Maintain 7000 or above until established outbound for procedure turn.



CATEGORY	A	B	C	D
S-12	5240-1 801 (800-1)	5240-1 ¼ 801 (800-1 ¼)	5240-2 ¼ 801 (800-2 ¼)	5240-2 ½ 801 (800-2 ½)
CIRCLING	5240-1 766 (800-1)	5240-1 ¼ 766 (800-1 ¼)	5240-2 ¼ 766 (800-2 ¼)	5240-2 ½ 766 (800-2 ½)

REIL Rwy 30 **0**
HIRL Rwy 12-30 **0**