

BOISE, IDAHO


AL-57 (FAA)

VORTAC BOI 113.3 Chan 80	APP CRS 098°	Rwy Idg TDZE 2833 Apt Elev 2868	9763
--	------------------------	---	-------------

VOR/DME RWY 10R

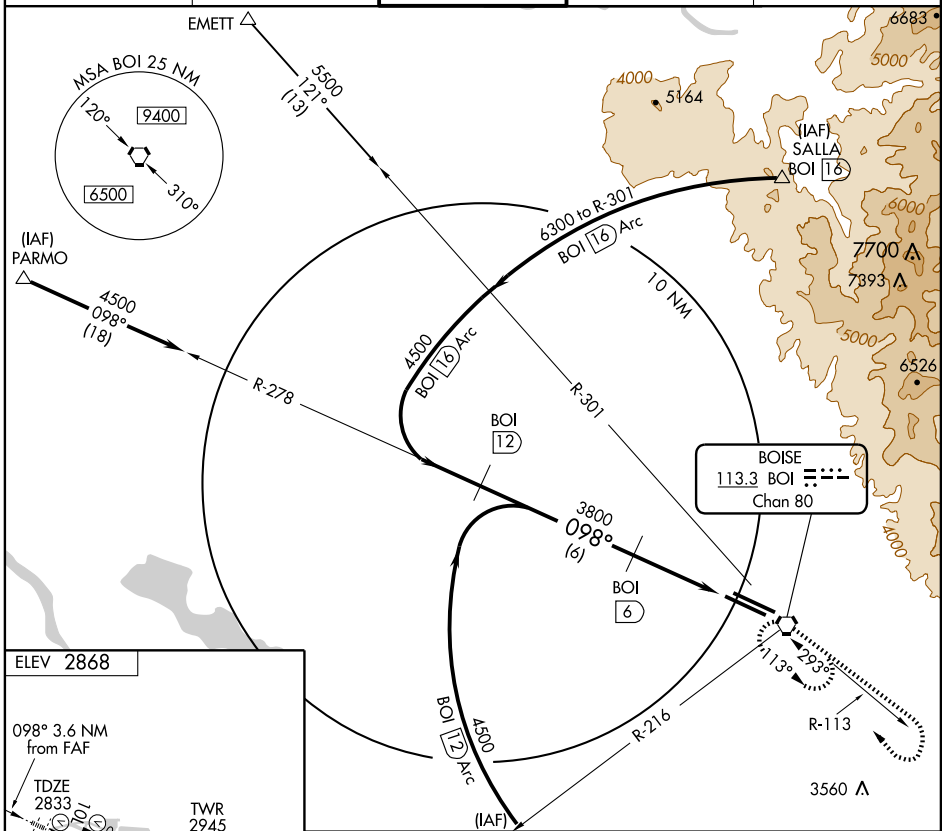
BOISE AIR TERMINAL (GOWEN FIELD) (BOI)

▼ Inoperative table does not apply to Cat D.
Circling not authorized north of Rwy 10L-28R.

SSALR 

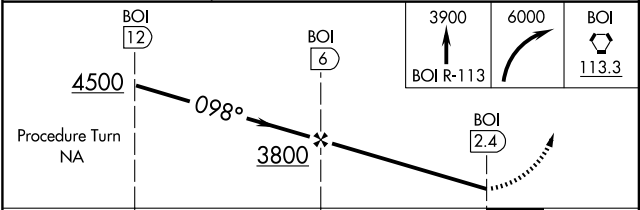
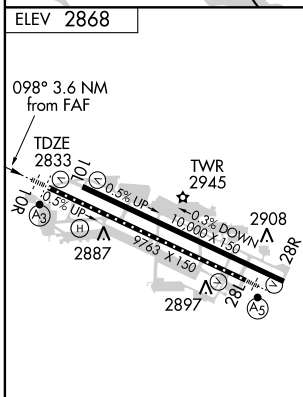
MISSED APPROACH: Climb to 3900 via BOI R-113 within 6 NM, then climbing right turn to 6000 direct BOI VORTAC and hold.

ATIS 123.9 290.4	BOISE APP CON 119.6 269.4	BOISE TOWER 118.1 257.8	GND CON 121.7 348.6	CLNC DEL 125.9 323.2
----------------------------	-------------------------------------	-----------------------------------	-------------------------------	--------------------------------



NW-1, 22 OCT 2009 to 19 NOV 2009

NW-1, 22 OCT 2009 to 19 NOV 2009



CATEGORY	A	B	C	D
S-10R	3160/24 327 (400-1/2)			3160/50 327 (400-1)
CIRCLING	3300-1 432 (500-1)	3320-1 452 (500-1)	3320-1 1/2 452 (500-1 1/2)	3420-2 552 (600-2)

BOISE, IDAHO
Orig-A 09071

43°34'N-116°13'W

BOISE AIR TERMINAL (GOWEN FIELD) (BOI) VOR/DME RWY 10R