


RNAV (GPS) Y RWY 28L

BOISE AIR TERMINAL (GOWEN FIELD) (BOI)

WAAS CH 77702 W28A	APP CRS 280°	Rwy Idg TDZE Apt Elev	9763 2858 2871
--	------------------------	-----------------------------	---

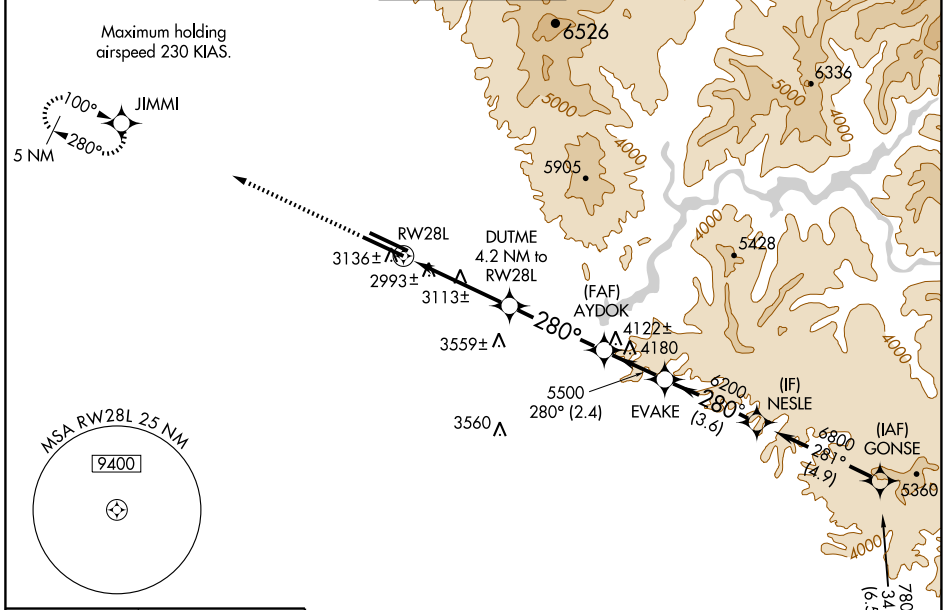
⚠ Circling NA north of Rwy 10L-28R. For uncompensated Baro-VNAV systems, LNAV/VNAV NA below -20°C (-4°F) or above 43°C (109°F). DME/DME RNP-0.3 NA.
⚠ For inoperative MALSR, increase LPV visibility to RVR 5000 all Cats, LNAV/VNAV Cat E to 1½, and LNAV Cat E to 2¼.

MALSR



MISSED APPROACH: Climb to 5000 direct JIMMI and hold, continue climb-in-hold to 6000.

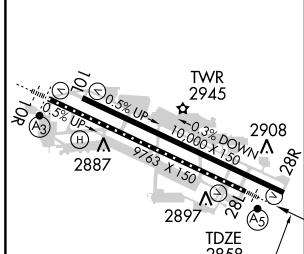
ATIS 123.9 290.4	BOISE APP CON 119.6 269.4	BOISE TOWER 118.1 257.8	GND CON 121.7 348.6	CLNC DEL 125.9 323.2
----------------------------	-------------------------------------	-----------------------------------	-------------------------------	--------------------------------



NW-1, 22 OCT 2009 to 19 NOV 2009

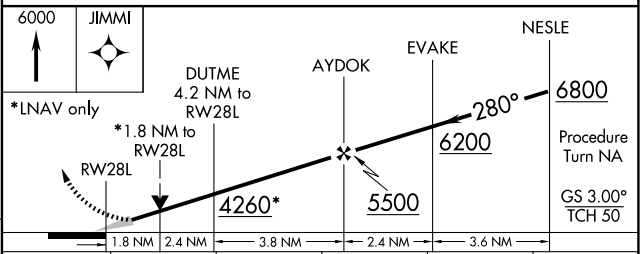
NW-1, 22 OCT 2009 to 19 NOV 2009

ELEV 2871



REIL Rwy 10L
 TDZ/CL Rws 10R and 28L
 HIRL Rws 10L-28R and 10R-28L

Procedure NA for arrivals at CANEK via V4-253-330 southeast bound.



CATEGORY	A	B	C	D	E
LPV DA	3183/24 325 (400-½)				
LNAV/VNAV DA	3274/50 416 (500-1)				
LNAV MDA	3480/24	622 (700-½)	3480/60 622 (700-1¼)	3480-1½ 622 (700-1½)	3480-1¾ 622 (700-1¾)
CIRCLING	3480-1	609 (700-1)	3480-1¾ 609 (700-1¾)	3480-2 609 (700-2)	3860-3 989 (1000-3)