

BOISE, IDAHO


AL-57 (FAA)

RNAV (GPS) Y RWY 10R

BOISE AIR TERMINAL (GOWEN FIELD) (BOI)

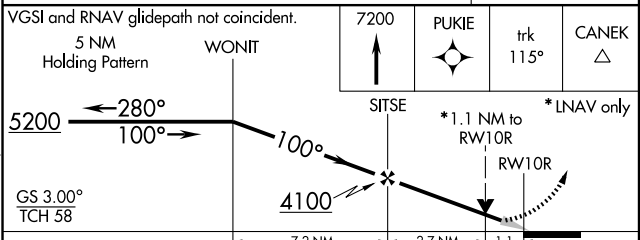
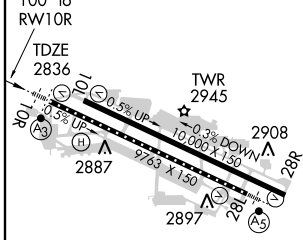
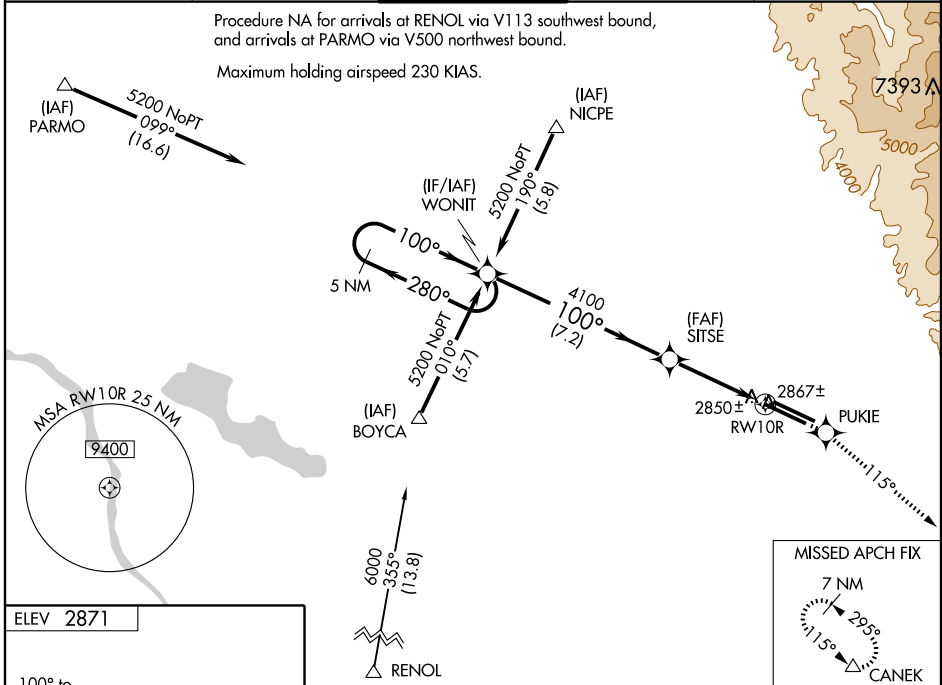
WAAS CH 40203 W10B	APP CRS 100°	Rwy Idg TDZE Apt Elev	9763 2836 2871
--	------------------------	-----------------------------	---

▼ For inoperative SSALR, increase LNAV Cat. D visibility to RVR 6000.
▲ For uncompensated Baro-VNAV systems, LNAV/VNAV NA below -20°C (-4°F) or above 42°C (107°F).
 Circling NA north of Rwy 10L and 28R.
 DME/DME RNP- 0.3 NA.

SSALR

 MISSED APPROACH: Climb to 7200 direct PUKIE and via track 115° to CANEK and hold.

ATIS 123.9 290.4	BOISE APP CON 119.6 269.4	BOISE TOWER 118.1 257.8	GND CON 121.7 348.6	CLNC DEL 125.9 323.2
----------------------------	-------------------------------------	--	-------------------------------	--------------------------------

Procedure NA for arrivals at RENOL via V113 southwest bound, and arrivals at PARMO via V500 northwest bound.
 Maximum holding airspeed 230 KIAS.



CATEGORY	A	B	C	D	E
LPV DA	3086/24 250 (300-½)				
LNAV/VNAV DA	3189/40 353 (400-¾)				
LNAV MDA	3240/24	404 (400-½)	3240/40 404 (400-¾)	3240/50	404 (400-1)
CIRCLING	3440-1	569 (600-1)	3440-1½ 569 (600-1½)	3440-2	3860-3 989 (1000-3)

REIL Rwy 10L
 TDZ/CL Rwy 10R and 28L
 HIRL Rwy 10L-28R and 10R-28L

BOISE, IDAHO
 Amdt 1A 09239

BOISE AIR TERMINAL (GOWEN FIELD) (BOI)
 43°34'N-116°13'W
RNAV (GPS) Y RWY 10R

NW-1, 22 OCT 2009 to 19 NOV 2009

NW-1, 22 OCT 2009 to 19 NOV 2009