

RNAV (RNP) Z RWY 10L

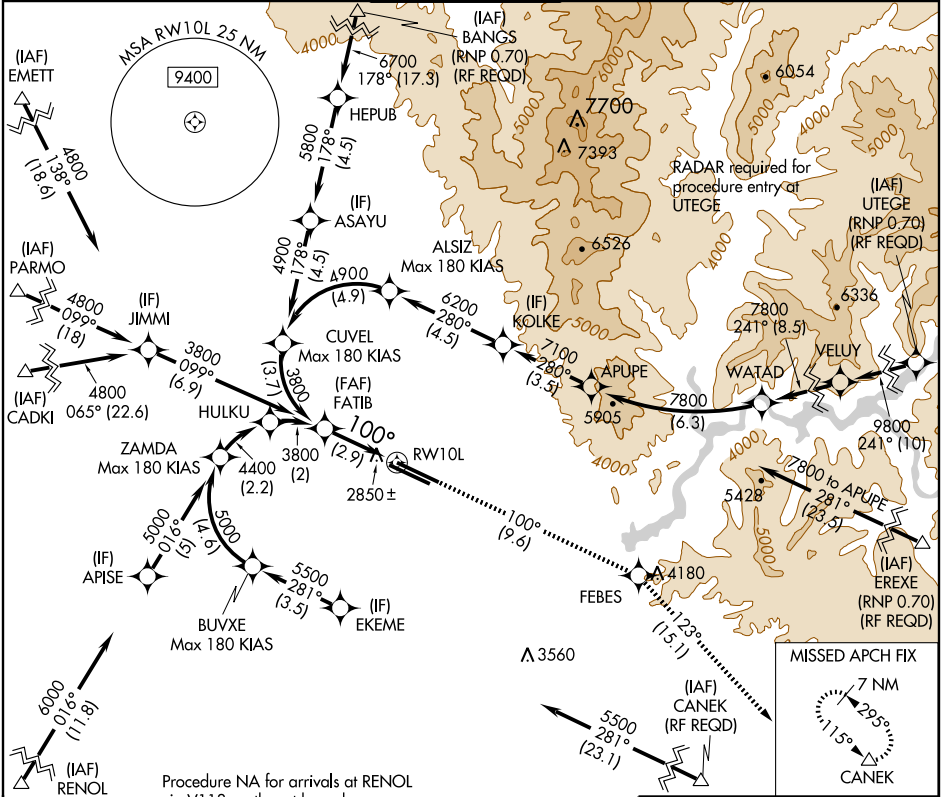
BOISE AIR TERMINAL (GOWEN FIELD) (BOI)

APP CRS	Rwy Idg	10000
100°	TDZE	2844
	Apt Elev	2871

GPS required. For uncompensated Baro-VNAV systems, procedure NA below -14°C (7°F) or above 41°C (107°F). When VGSI inoperative, procedure NA at night. Visibility reduction by helicopters NA.

MISSED APPROACH: Climb to 7200 via track 100° to FEBES and via track 123° to CANEK and hold.

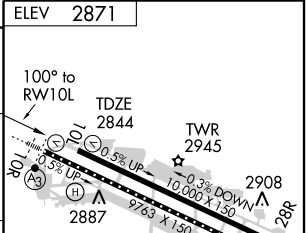
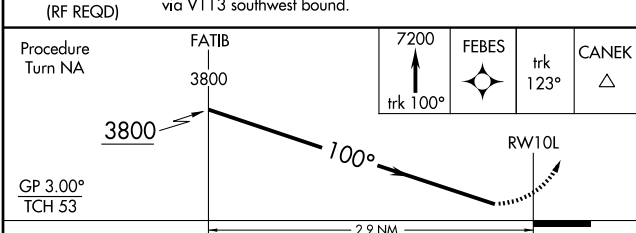
ATIS	BOISE APP CON	BOISE TOWER	GND CON	CLNC DEL
123.9 290.4	119.6 269.4	118.1 257.8	121.7 348.6	125.9 323.2



NW-1, 22 OCT 2009 to 19 NOV 2009

NW-1, 22 OCT 2009 to 19 NOV 2009

Procedure NA for arrivals at RENOL via V113 southwest bound.



CATEGORY	A	B	C	D
RNP 0.18 DA	3145-1 301 (300-1)			
RNP 0.30 DA	3175-1¼ 331 (400-1¼)			

SPECIAL AIRCRAFT & AIRCREW AUTHORIZATION REQUIRED

REIL Rwy 10L
TDZ/CL Rwys 10R and 28L
HIRL Rwys 10L-28R and 10R-28L