

LOC/DME I-BOI 111.1 Chan 48	APP CRS 280°	Rwy Idg TDZE 9763 2858	Apt Elev 2871
--	------------------------	--	-------------------------

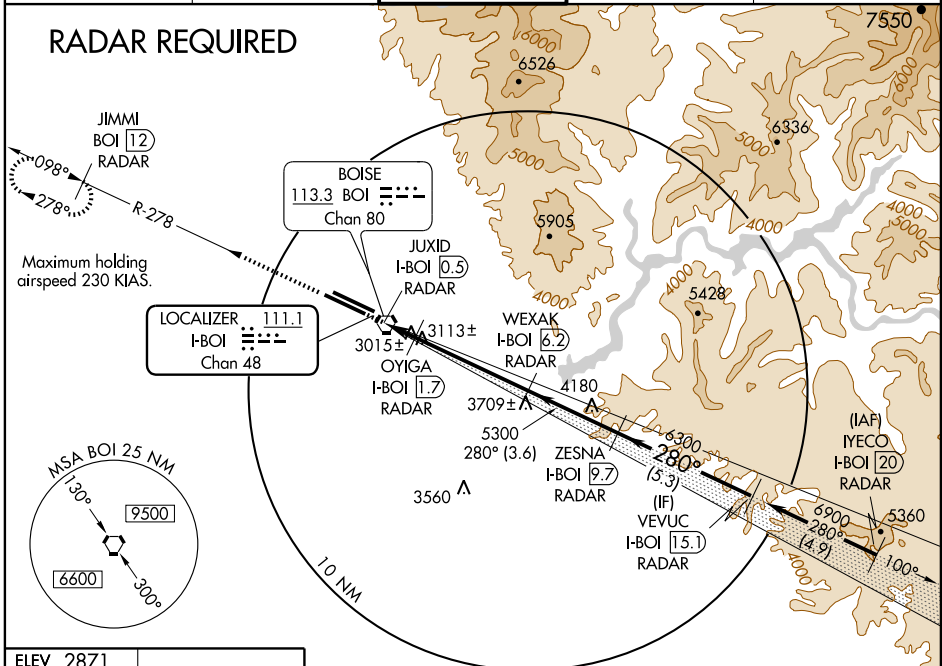
LOC BC RWY 28L

BOISE AIR TERMINAL (GOWEN FIELD) (BOI)

<p>⚠ For inoperative MALSR, increase S-28L Cat. E visibility to 1½.</p> <p>⚠ Circling NA north of Rwy 10L-28R. DME or RADAR required.</p>	<p>MALSR</p>	<p>MISSED APPROACH: Climb to 4500 via BOI VORTAC R-278 to JIMMI/12 DME/RADAR and hold.</p>
---	--------------	--

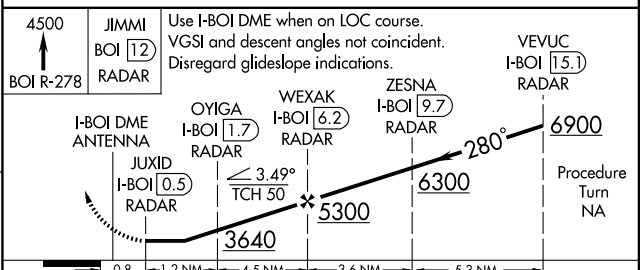
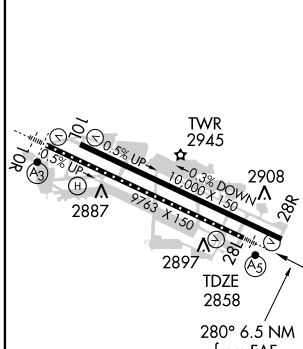
ATIS 123.9 290.4	BOISE APP CON 119.6 269.4	BOISE TOWER 118.1 257.8	GND CON 121.7 348.6	CLNC DEL 125.9 323.2
----------------------------	-------------------------------------	--	-------------------------------	--------------------------------

RADAR REQUIRED



NW-1, 22 OCT 2009 to 19 NOV 2009

ELEV 2871



CATEGORY	A	B	C	D	E
S-28L	3300/24	442 (500-½)	3300/40 442 (500-¾)	3300/50	442 (500-1)
CIRCLING	3300-1 429 (500-1)	3340-1 469 (500-1)	3340-1½ 469 (500-1½)	3440-2 569 (600-2)	3740-3 869 (900-3)

LOC BC RWY 28L