

LOC/DME I-BOI 111.1 Chan 48	APP CRS 100°	Rwy Idg 10R 9763 TDZE 2836 Apt Elev 2871	Rwy Idg 10L 10000 TDZE 2844 Apt Elev 2871
---	------------------------	---	--

ILS or LOC RWY 10R

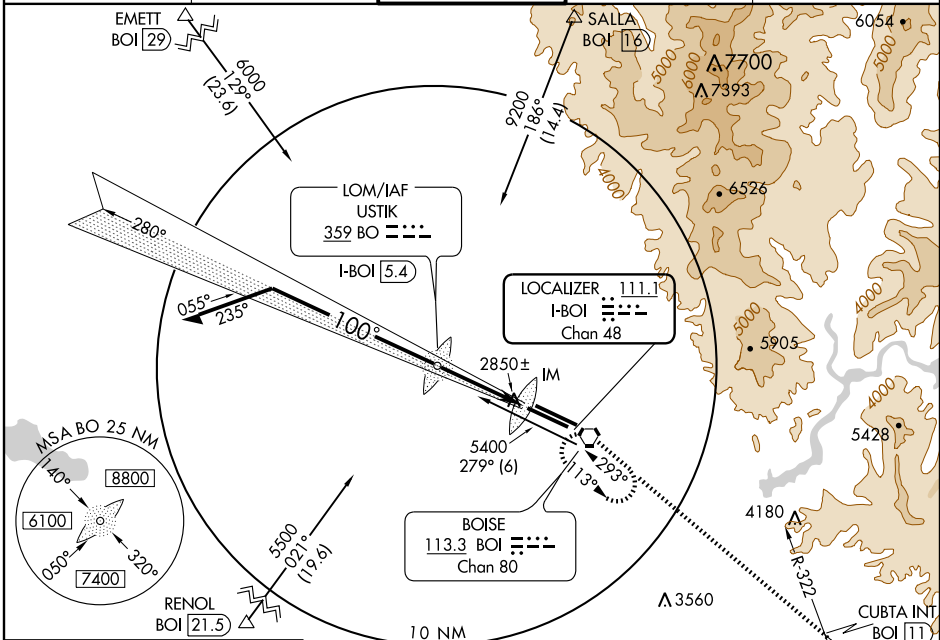
BOISE AIR TERMINAL (GOWEN FIELD) (BOI)

▼ For inoperative MALS/R, increase S-LOC 10R Cat. D visibility to RVR 5000.
Circling NA north of Rwy 10L-28R.
Visibility reduction by helicopters NA for sidestep.



MISSED APPROACH: Climb to 6000 via BOI VORTAC R-113 to CUBTA INT/BOI 11 DME, and continue climbing right turn to 6000 direct BOI VORTAC and hold.

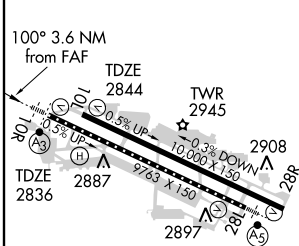
ATIS 123.9 290.4	BOISE APP CON 119.6 269.4	BOISE TOWER 118.1 257.8	GND CON 121.7 348.6	CLNC DEL 125.9 323.2
----------------------------	-------------------------------------	-----------------------------------	-------------------------------	--------------------------------



NW-1, 22 OCT 2009 to 19 NOV 2009

NW-1, 22 OCT 2009 to 19 NOV 2009

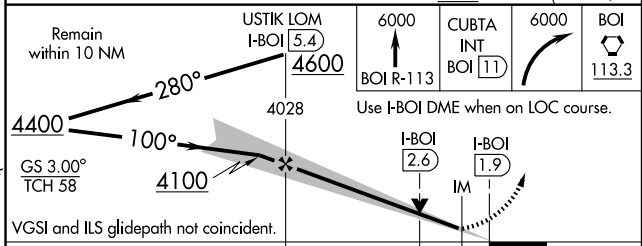
ELEV 2871



REIL Rwy 10L
TDZ/CL Rwy 10R and 28L
HIRL Rwy 10L-28R and 10R-28L

FAF to MAP 3.6 NM					
Knots	60	90	120	150	180
Min:Sec	3:36	2:24	1:48	1:26	1:12

ADF or DME REQUIRED



CATEGORY	A	B	C	D
S-ILS 10R	3036/18 200 (200-½)			
S-LOC 10R	3120/24 284 (300-½)			3120/40 284 (300-¾)
SIDESTEP RWY 10L	3120-1 276 (300-1)	3120-1½ 276 (300-1½)		3120-2 276 (300-2)
CIRCLING	3300-1 429 (500-1)	3340-1 469 (500-1)	3340-1½ 469 (500-1½)	3440-2 569 (600-2)