

BOISE, IDAHO

HI-VOR/DME or TACAN RWY 10R

VORTAC BOI 113.3 Chan 80	APCH CRS 098°	Rwy Idg TDZE Arpt Elev 9763 2833 2871
---------------------------------------	-------------------------	---

JAL-57 [USAF]

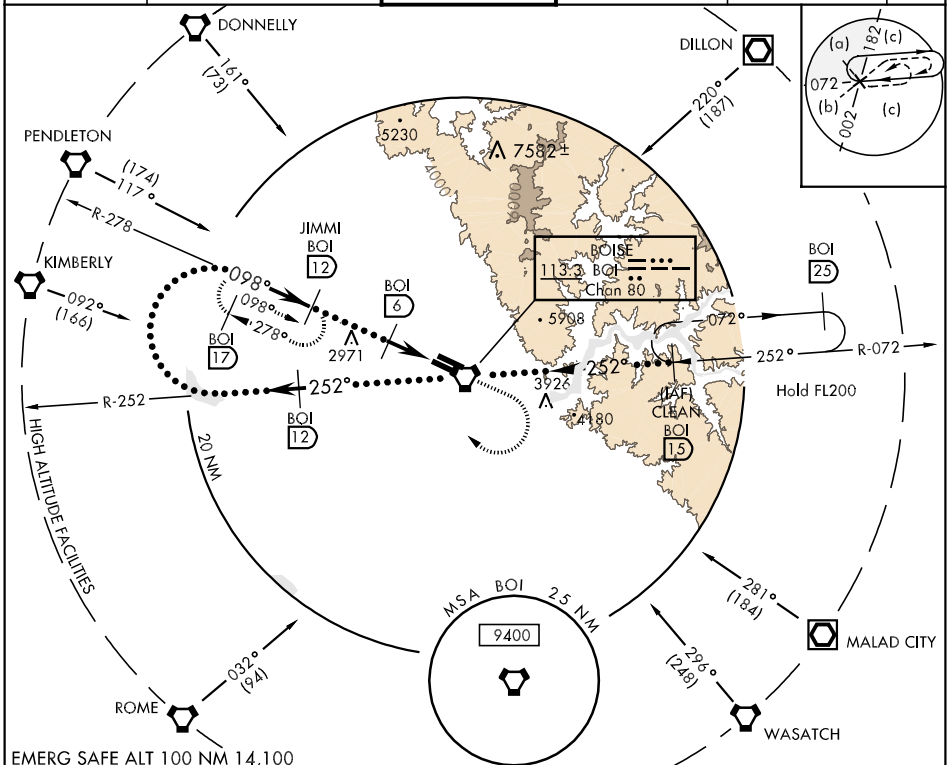
BOISE AIR TERMINAL (GOWEN FLD) (KBOI)

▼ * When ALS inop, increase CAT C RVR to 50 and CAT E RVR to 60.
** Circling N of Rwy 10L-28R NA.



MISSED APPROACH: Climb to 3700 then climbing right turn to 5000 via heading 320° to intercept BOI VORTAC R-278 then direct JIMMI INT and hold

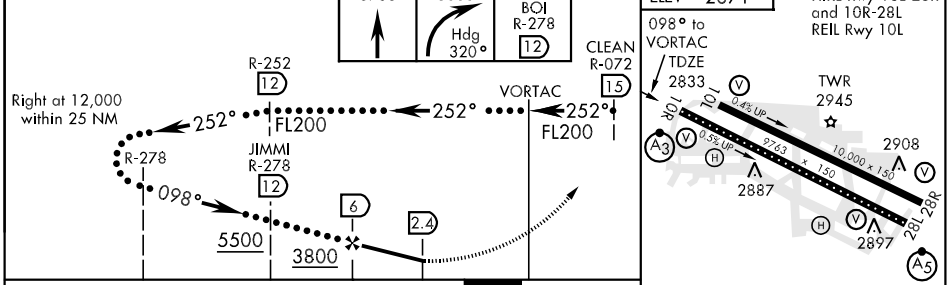
ATIS 123.9 290.4	BOISE APP CON 119.6 269.4	BOISE TOWER 118.1 257.8	GND CON 121.7 348.6	CLNC DEL 125.9 323.2	ASOS
----------------------------	-------------------------------------	-----------------------------------	-------------------------------	--------------------------------	------



NW-1, 22 OCT 2009 to 19 NOV 2009

NW-1, 22 OCT 2009 to 19 NOV 2009

EMERG SAFE ALT 100 NM 14,100



CATEGORY	C	D	E
S-10R *	3160/24 327 (400-1/2)	3160/50 327 (400-1)	
CIRCLING **	3320-1 1/2 452 (500-1 1/2)	3420-2 552 (600-2)	3680-3 812 (900-3)

ELEV 2871	HIRL Rwy 10L-28R and 10R-28L REIL Rwy 10L
098° to VORTAC TDZE 2833	TWR 2945
370° to VORTAC TDZE 2833	2908
330° to VORTAC TDZE 2833	2897
300° to VORTAC TDZE 2833	2887
270° to VORTAC TDZE 2833	2877
240° to VORTAC TDZE 2833	2867
210° to VORTAC TDZE 2833	2857
180° to VORTAC TDZE 2833	2847
150° to VORTAC TDZE 2833	2837
120° to VORTAC TDZE 2833	2827
90° to VORTAC TDZE 2833	2817
60° to VORTAC TDZE 2833	2807
30° to VORTAC TDZE 2833	2797
0° to VORTAC TDZE 2833	2787
330° to VORTAC TDZE 2833	2777
300° to VORTAC TDZE 2833	2767
270° to VORTAC TDZE 2833	2757
240° to VORTAC TDZE 2833	2747
210° to VORTAC TDZE 2833	2737
180° to VORTAC TDZE 2833	2727
150° to VORTAC TDZE 2833	2717
120° to VORTAC TDZE 2833	2707
90° to VORTAC TDZE 2833	2697
60° to VORTAC TDZE 2833	2687
30° to VORTAC TDZE 2833	2677
0° to VORTAC TDZE 2833	2667
330° to VORTAC TDZE 2833	2657
300° to VORTAC TDZE 2833	2647
270° to VORTAC TDZE 2833	2637
240° to VORTAC TDZE 2833	2627
210° to VORTAC TDZE 2833	2617
180° to VORTAC TDZE 2833	2607
150° to VORTAC TDZE 2833	2597
120° to VORTAC TDZE 2833	2587
90° to VORTAC TDZE 2833	2577
60° to VORTAC TDZE 2833	2567
30° to VORTAC TDZE 2833	2557
0° to VORTAC TDZE 2833	2547
330° to VORTAC TDZE 2833	2537
300° to VORTAC TDZE 2833	2527
270° to VORTAC TDZE 2833	2517
240° to VORTAC TDZE 2833	2507
210° to VORTAC TDZE 2833	2497
180° to VORTAC TDZE 2833	2487
150° to VORTAC TDZE 2833	2477
120° to VORTAC TDZE 2833	2467
90° to VORTAC TDZE 2833	2457
60° to VORTAC TDZE 2833	2447
30° to VORTAC TDZE 2833	2437
0° to VORTAC TDZE 2833	2427
330° to VORTAC TDZE 2833	2417
300° to VORTAC TDZE 2833	2407
270° to VORTAC TDZE 2833	2397
240° to VORTAC TDZE 2833	2387
210° to VORTAC TDZE 2833	2377
180° to VORTAC TDZE 2833	2367
150° to VORTAC TDZE 2833	2357
120° to VORTAC TDZE 2833	2347
90° to VORTAC TDZE 2833	2337
60° to VORTAC TDZE 2833	2327
30° to VORTAC TDZE 2833	2317
0° to VORTAC TDZE 2833	2307
330° to VORTAC TDZE 2833	2297
300° to VORTAC TDZE 2833	2287
270° to VORTAC TDZE 2833	2277
240° to VORTAC TDZE 2833	2267
210° to VORTAC TDZE 2833	2257
180° to VORTAC TDZE 2833	2247
150° to VORTAC TDZE 2833	2237
120° to VORTAC TDZE 2833	2227
90° to VORTAC TDZE 2833	2217
60° to VORTAC TDZE 2833	2207
30° to VORTAC TDZE 2833	2197
0° to VORTAC TDZE 2833	2187
330° to VORTAC TDZE 2833	2177
300° to VORTAC TDZE 2833	2167
270° to VORTAC TDZE 2833	2157
240° to VORTAC TDZE 2833	2147
210° to VORTAC TDZE 2833	2137
180° to VORTAC TDZE 2833	2127
150° to VORTAC TDZE 2833	2117
120° to VORTAC TDZE 2833	2107
90° to VORTAC TDZE 2833	2097
60° to VORTAC TDZE 2833	2087
30° to VORTAC TDZE 2833	2077
0° to VORTAC TDZE 2833	2067
330° to VORTAC TDZE 2833	2057
300° to VORTAC TDZE 2833	2047
270° to VORTAC TDZE 2833	2037
240° to VORTAC TDZE 2833	2027
210° to VORTAC TDZE 2833	2017
180° to VORTAC TDZE 2833	2007
150° to VORTAC TDZE 2833	1997
120° to VORTAC TDZE 2833	1987
90° to VORTAC TDZE 2833	1977
60° to VORTAC TDZE 2833	1967
30° to VORTAC TDZE 2833	1957
0° to VORTAC TDZE 2833	1947
330° to VORTAC TDZE 2833	1937
300° to VORTAC TDZE 2833	1927
270° to VORTAC TDZE 2833	1917
240° to VORTAC TDZE 2833	1907
210° to VORTAC TDZE 2833	1897
180° to VORTAC TDZE 2833	1887
150° to VORTAC TDZE 2833	1877
120° to VORTAC TDZE 2833	1867
90° to VORTAC TDZE 2833	1857
60° to VORTAC TDZE 2833	1847
30° to VORTAC TDZE 2833	1837
0° to VORTAC TDZE 2833	1827
330° to VORTAC TDZE 2833	1817
300° to VORTAC TDZE 2833	1807
270° to VORTAC TDZE 2833	1797
240° to VORTAC TDZE 2833	1787
210° to VORTAC TDZE 2833	1777
180° to VORTAC TDZE 2833	1767
150° to VORTAC TDZE 2833	1757
120° to VORTAC TDZE 2833	1747
90° to VORTAC TDZE 2833	1737
60° to VORTAC TDZE 2833	1727
30° to VORTAC TDZE 2833	1717
0° to VORTAC TDZE 2833	1707
330° to VORTAC TDZE 2833	1697
300° to VORTAC TDZE 2833	1687
270° to VORTAC TDZE 2833	1677
240° to VORTAC TDZE 2833	1667
210° to VORTAC TDZE 2833	1657
180° to VORTAC TDZE 2833	1647
150° to VORTAC TDZE 2833	1637
120° to VORTAC TDZE 2833	1627
90° to VORTAC TDZE 2833	1617
60° to VORTAC TDZE 2833	1607
30° to VORTAC TDZE 2833	1597
0° to VORTAC TDZE 2833	1587
330° to VORTAC TDZE 2833	1577
300° to VORTAC TDZE 2833	1567
270° to VORTAC TDZE 2833	1557
240° to VORTAC TDZE 2833	1547
210° to VORTAC TDZE 2833	1537
180° to VORTAC TDZE 2833	1527
150° to VORTAC TDZE 2833	1517
120° to VORTAC TDZE 2833	1507
90° to VORTAC TDZE 2833	1497
60° to VORTAC TDZE 2833	1487
30° to VORTAC TDZE 2833	1477
0° to VORTAC TDZE 2833	1467
330° to VORTAC TDZE 2833	1457
300° to VORTAC TDZE 2833	1447
270° to VORTAC TDZE 2833	1437
240° to VORTAC TDZE 2833	1427
210° to VORTAC TDZE 2833	1417
180° to VORTAC TDZE 2833	1407
150° to VORTAC TDZE 2833	1397
120° to VORTAC TDZE 2833	1387
90° to VORTAC TDZE 2833	1377
60° to VORTAC TDZE 2833	1367
30° to VORTAC TDZE 2833	1357
0° to VORTAC TDZE 2833	1347
330° to VORTAC TDZE 2833	1337
300° to VORTAC TDZE 2833	1327
270° to VORTAC TDZE 2833	1317
240° to VORTAC TDZE 2833	1307
210° to VORTAC TDZE 2833	1297
180° to VORTAC TDZE 2833	1287
150° to VORTAC TDZE 2833	1277
120° to VORTAC TDZE 2833	1267
90° to VORTAC TDZE 2833	1257
60° to VORTAC TDZE 2833	1247
30° to VORTAC TDZE 2833	1237
0° to VORTAC TDZE 2833	1227
330° to VORTAC TDZE 2833	1217
300° to VORTAC TDZE 2833	1207
270° to VORTAC TDZE 2833	1197
240° to VORTAC TDZE 2833	1187
210° to VORTAC TDZE 2833	1177
180° to VORTAC TDZE 2833	1167
150° to VORTAC TDZE 2833	1157
120° to VORTAC TDZE 2833	1147
90° to VORTAC TDZE 2833	1137
60° to VORTAC TDZE 2833	1127
30° to VORTAC TDZE 2833	1117
0° to VORTAC TDZE 2833	1107
330° to VORTAC TDZE 2833	1097
300° to VORTAC TDZE 2833	1087
270° to VORTAC TDZE 2833	1077
240° to VORTAC TDZE 2833	1067
210° to VORTAC TDZE 2833	1057
180° to VORTAC TDZE 2833	1047
150° to VORTAC TDZE 2833	1037
120° to VORTAC TDZE 2833	1027
90° to VORTAC TDZE 2833	1017
60° to VORTAC TDZE 2833	1007
30° to VORTAC TDZE 2833	997
0° to VORTAC TDZE 2833	987
330° to VORTAC TDZE 2833	977
300° to VORTAC TDZE 2833	967
270° to VORTAC TDZE 2833	957
240° to VORTAC TDZE 2833	947
210° to VORTAC TDZE 2833	937
180° to VORTAC TDZE 2833	927
150° to VORTAC TDZE 2833	917
120° to VORTAC TDZE 2833	907
90° to VORTAC TDZE 2833	897
60° to VORTAC TDZE 2833	887
30° to VORTAC TDZE 2833	877
0° to VORTAC TDZE 2833	867
330° to VORTAC TDZE 2833	857
300° to VORTAC TDZE 2833	847
270° to VORTAC TDZE 2833	837
240° to VORTAC TDZE 2833	827
210° to VORTAC TDZE 2833	817
180° to VORTAC TDZE 2833	807
150° to VORTAC TDZE 2833	797
120° to VORTAC TDZE 2833	787
90° to VORTAC TDZE 2833	777
60° to VORTAC TDZE 2833	767
30° to VORTAC TDZE 2833	757
0° to VORTAC TDZE 2833	747
330° to VORTAC TDZE 2833	737
300° to VORTAC TDZE 2833	727
270° to VORTAC TDZE 2833	717
240° to VORTAC TDZE 2833	707
210° to VORTAC TDZE 2833	697
180° to VORTAC TDZE 2833	687
150° to VORTAC TDZE 2833	677
120° to VORTAC TDZE 2833	667
90° to VORTAC TDZE 2833	657
60° to VORTAC TDZE 2833	647
30° to VORTAC TDZE 2833	637
0° to VORTAC TDZE 2833	627
330° to VORTAC TDZE 2833	617
300° to VORTAC TDZE 2833	607
270° to VORTAC TDZE 2833	597
240° to VORTAC TDZE 2833	587
210° to VORTAC TDZE 2833	577
180° to VORTAC TDZE 2833	567
150° to VORTAC TDZE 2833	557
120° to VORTAC TDZE 2833	547
90° to VORTAC TDZE 2833	537
60° to VORTAC TDZE 2833	527
30° to VORTAC TDZE 2833	517
0° to VORTAC TDZE 2833	507
330° to VORTAC TDZE 2833	497
300° to VORTAC TDZE 2833	487
270° to VORTAC TDZE 2833	477
240° to VORTAC TDZE 2833	467
210° to VORTAC TDZE 2833	457
180° to VORTAC TDZE 2833	447
150° to VORTAC TDZE 2833	437
120° to VORTAC TDZE 2833	427
90° to VORTAC TDZE 2833	417
60° to VORTAC TDZE 2833	407
30° to VORTAC TDZE 2833	397
0° to VORTAC TDZE 2833	387
330° to VORTAC TDZE 2833	377
300° to VORTAC TDZE 2833	367
270° to VORTAC TDZE 2833	357
240° to VORTAC TDZE 2833	347
210° to VORTAC TDZE 2833	337
180° to VORTAC TDZE 2833	327
150° to VORTAC TDZE 2833	317
120° to VORTAC TDZE 2833	307
90° to VORTAC TDZE 2833	297
60° to VORTAC TDZE 2833	287
30° to VORTAC TDZE 2833	277
0° to VORTAC TDZE 2833	267
330° to VORTAC TDZE 2833	257
300° to VORTAC TDZE 2833	247
270° to VORTAC TDZE 2833	237
240° to VORTAC TDZE 2833	227
210° to VORTAC TDZE 2833	217
180° to VORTAC TDZE 2833	207
150° to VORTAC TDZE 2833	197
120° to VORTAC TDZE 2833	187
90° to VORTAC TDZE 2833	177
60° to VORTAC TDZE 2833	167
30° to VORTAC TDZE 2833	157
0° to VORTAC TDZE 2833	147
330° to VORTAC TDZE 2833	137
300° to VORTAC TDZE 2833	127
270° to VORTAC TDZE 2833	117
240° to VORTAC TDZE 2833	107
210° to VORTAC TDZE 2833	97
180° to VORTAC TDZE 2833	87
150° to VORTAC TDZE 2833	77
120° to VORTAC TDZE 2833	67
90° to VORTAC TDZE 2833	57
60° to VORTAC TDZE 2833	47
30° to VORTAC TDZE 2833	37
0° to VORTAC TDZE 2833	