


RNAV (GPS) RWY 18

BLYTHEVILLE / ARKANSAS INTL (BYH)

WAAS CH 58306 W18A	APP CRS 179°	Rwy Idg 11602 TDZE 250 Apt Elev 254
--	------------------------	--

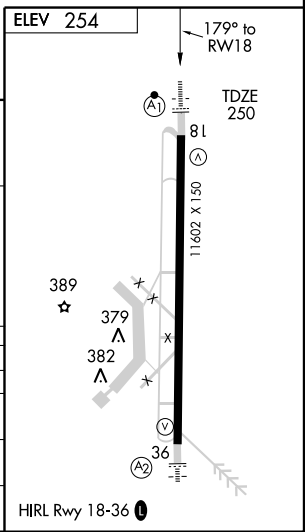
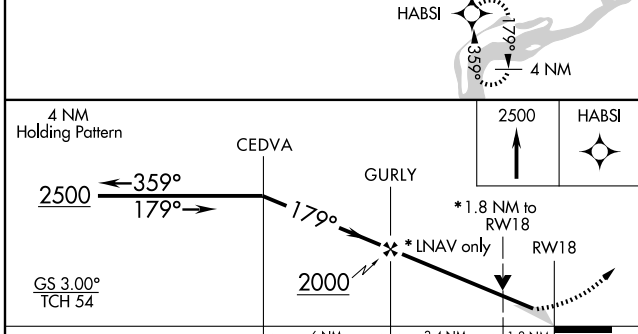
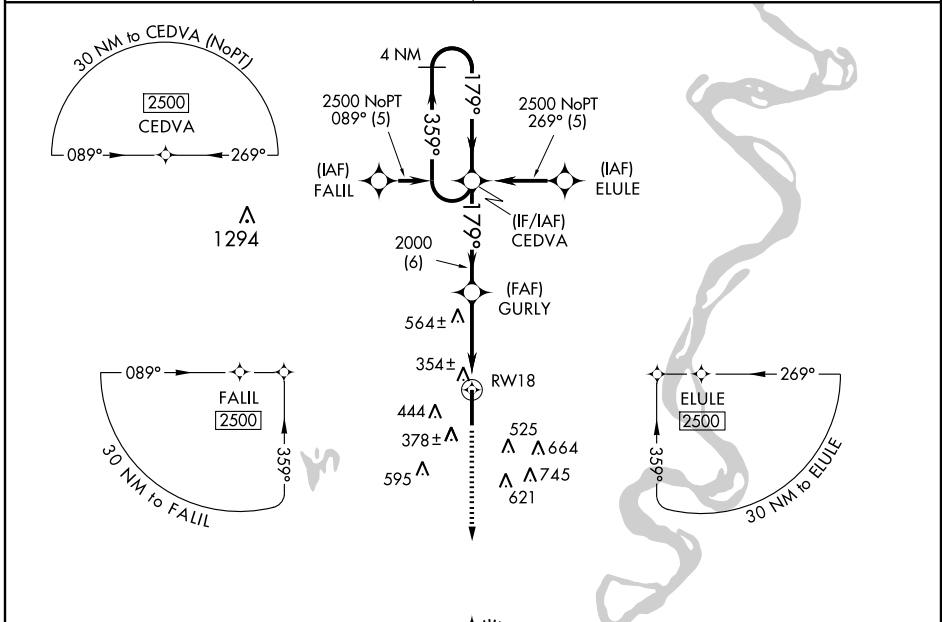
⚠ Circling NA East of Rwy 18-36. For uncompensated Baro-VNAV systems, LNAV/VNAV NA below -15°C (5°F) or above 48°C (118°F). DME/DME RNP-0.3 NA. Obtain local altimeter setting on CTAF; when not received, use Blytheville Muni altimeter setting and increase all DAs 14 feet, all MDAs 20 feet. Baro-VNAV and VDP NA when using Blytheville Muni altimeter setting. For inoperative ALSF, when using Blytheville Muni altimeter setting, increase LPV visibility to 1 mile all Cats.

⚠ NA

ALSF-1 

MISSED APPROACH: Climb to 2500 direct HABS1 and hold.

MEMPHIS CENTER 134.65 316.15	UNICOM 122.7 (CTAF) 
--	---



CATEGORY	A	B	C	D
LPV DA		510-1/2	260 (300-1/2)	
LNAV/VNAV DA		624-3/4	374 (400-3/4)	
LNAV MDA	880-1/2	630 (700-1/2)	880-1 1/4 630 (700-1 1/4)	880-1 1/2 630 (700-1 1/2)
CIRCLING	880-1	626 (700-1)	880-1 3/4 626 (700-1 3/4)	880-2 626 (700-2)

SC-1, 22 OCT 2009 to 19 NOV 2009

SC-1, 22 OCT 2009 to 19 NOV 2009