

# ILS RWY 18

BLYTHEVILLE/ARKANSAS INTL (BYH)

LOC/DME I-BYH <b>110.3</b> Chan <b>40</b>	APP CRS <b>179°</b>	Rwy ldg <b>11602</b> TDZE <b>250</b> Apt Elev <b>254</b>
---	------------------------	--

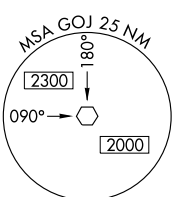
**⚠** For inoperative ALSF-1, increase S-LOC-18 Cat D visibility to 1 mile. Circling not authorized East of Rwy 18-36. Obtain local altimeter setting on CTAF; when not received, use Blytheville Muni altimeter setting and increase all DA/MDAs 20 feet.



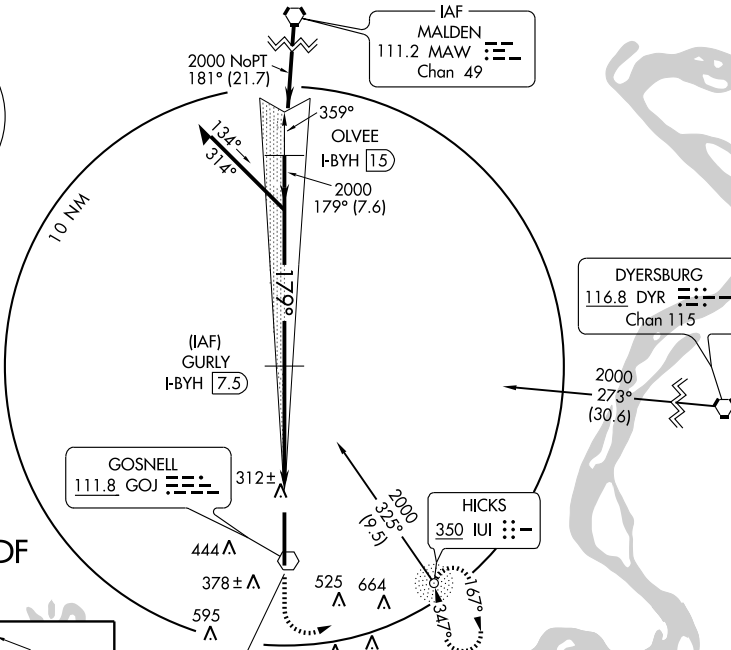
**MISSED APPROACH:** Climb to 2000 then left turn direct IUI NDB and hold.

MEMPHIS CENTER  
**134.65 316.15**

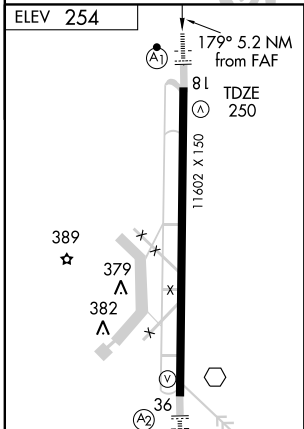
UNICOM  
**122.7 (CTAF)**



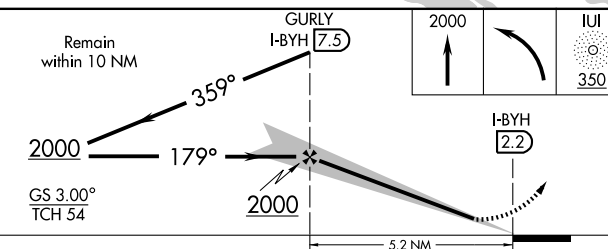
△  
1294



**DME and ADF REQUIRED**



**LOCALIZER 110.3**  
I-BYH  
Chan 40



CATEGORY	A	B	C	D
S-ILS 18		450-½	200 (200-½)	
S-LOC 18		580-½	330 (400-½)	580-¾ 330 (400-¾)
CIRCLING	700-1 446 (500-1)	720-1 466 (500-1)	720-1½ 466 (500-1½)	820-2 566 (600-2)

FAF to MAP 5.2 NM

Knots	60	90	120	150	180
Min:Sec	5:12	3:28	2:36	2:05	1:44

# ILS RWY 18

SC-1, 22 OCT 2009 to 19 NOV 2009

SC-1, 22 OCT 2009 to 19 NOV 2009