

BLYTHE, CALIFORNIA

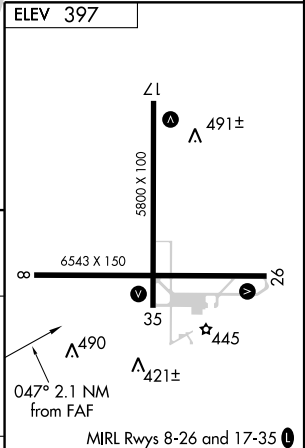
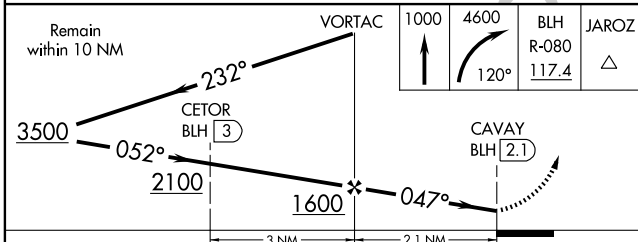
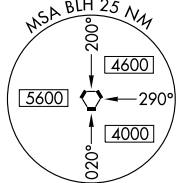
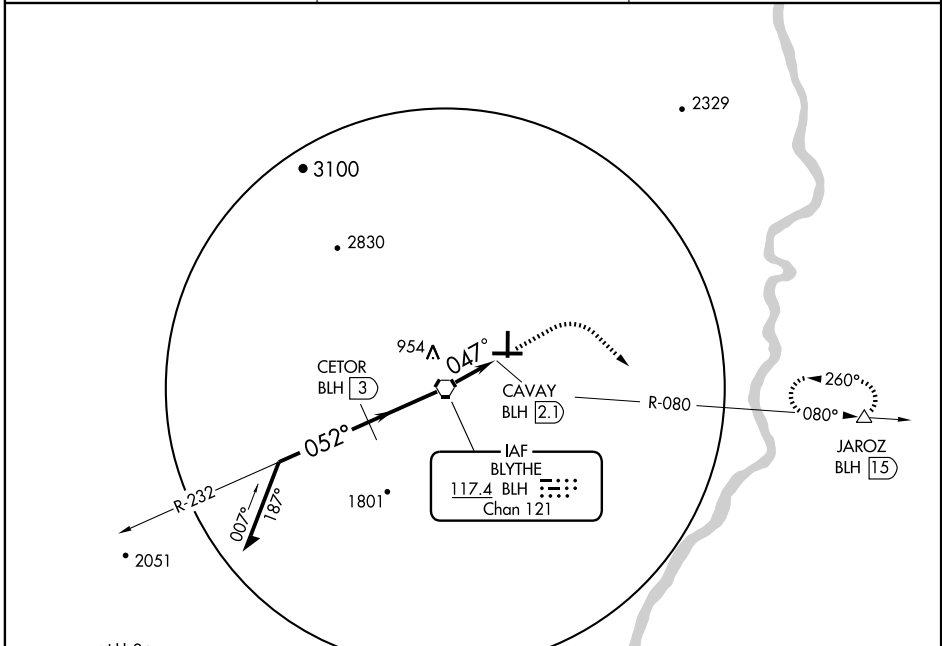
AL-53 (FAA)

VOR/DME-A BLYTHE (BLH)

VORTAC BLH 117.4 Chan 121	APP CRS 047°	Rwy Idg TDZE Apt Elev	N/A N/A 397
---	------------------------	-----------------------------	--

MISSED APPROACH: Climb to 1000, then climbing right turn to 4600 via heading 120° and BLH R-080 outbound to JAROZ/15 DME and hold.

ASOS 120.175	LOS ANGELES CENTER 128.15 285.6	UNICOM 122.8 (CTAF)
------------------------	---	-------------------------------



CATEGORY	A	B	C	D	Knots	60	90	120	150	180
CIRCLING	840-1 443 (500-1)	860-1 463 (500-1)	960-1½ 563 (600-1½)	1260-2¾ 863 (900-2¾)	Min:Sec					

BLYTHE, CALIFORNIA
Orig-A 07186

33° 37'N - 114° 43'W

BLYTHE (BLH) VOR/DME-A

SW-3, 22 OCT 2009 to 19 NOV 2009

SW-3, 22 OCT 2009 to 19 NOV 2009