

BLYTHE, CALIFORNIA

AL-53 (FAA)

# RNAV (GPS) RWY 26

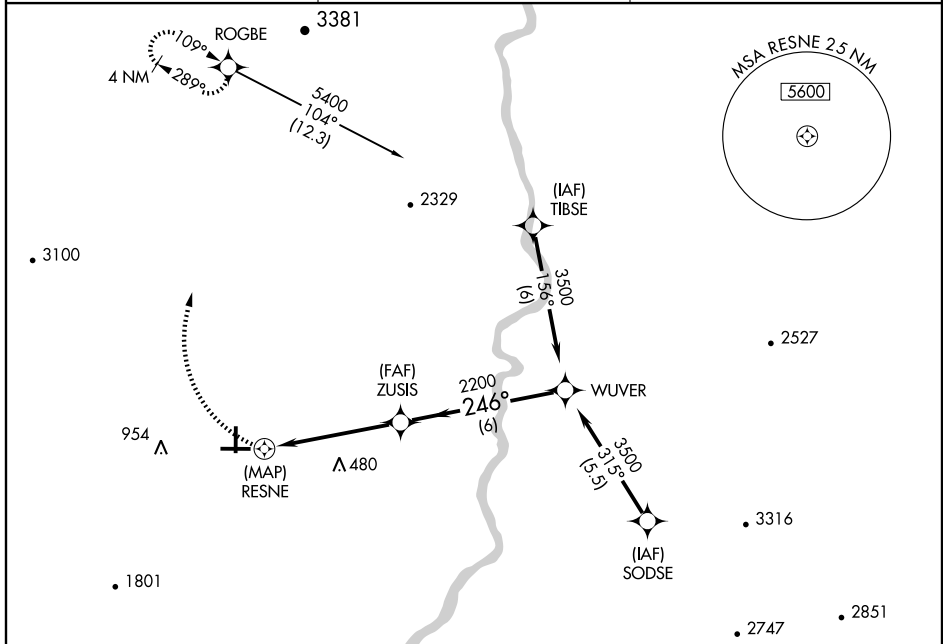
BLYTHE (BLH)

APP CRS <b>246°</b>	Rwy Idg <b>6543</b>
	TDZE <b>394</b>
	Apt Elev <b>397</b>

**▽** DME/DME RNP-0.3 NA.  
**▲**

MISSED APPROACH: Climbing right turn to 5400 direct ROGBE WP and hold.

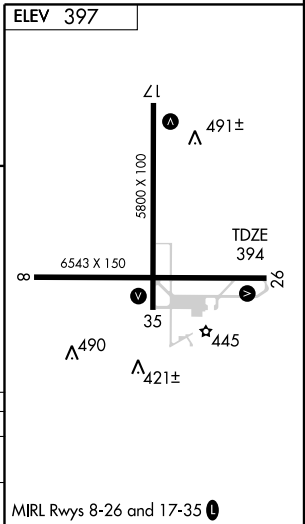
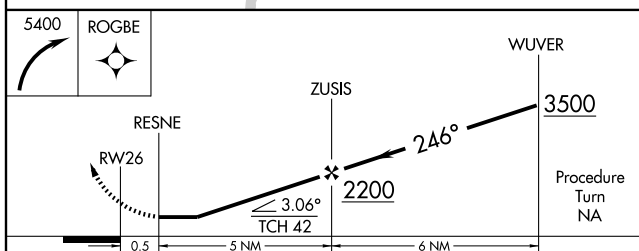
ASOS <b>120.175</b>	LOS ANGELES CENTER <b>128.15 285.6</b>	UNICOM <b>122.8 (CTAF)</b>
------------------------	---	-------------------------------



SW-3, 22 OCT 2009 to 19 NOV 2009

SW-3, 22 OCT 2009 to 19 NOV 2009

Procedure not authorized for arrival to SODSE on V16-V94 eastbound.



CATEGORY	A	B	C	D
LNVA MDA	760-1 366 (400-1)		760-1¼ 366 (400-1¼)	
CIRCLING	840-1 443 (500-1)	860-1 463 (500-1)	960-1½ 563 (600-1½)	1260-2¾ 863 (900-2¾)

MIRL Rwy 8-26 and 17-35

BLYTHE, CALIFORNIA  
Orig-A 08073

33° 37' N - 114° 43' W

# RNAV (GPS) RWY 26

BLYTHE (BLH)