

BLACKSTONE, VIRGINIA

AL-52 (FAA)

# RNAV (GPS) RWY 4

BLACKSTONE/ALLEN C. PERKINSON BLACKSTONE AAF (BKT)

APP CRS <b>058°</b>	Rwy Idg <b>4632</b>
	TDZE <b>429</b>
	Apt Elev <b>439</b>

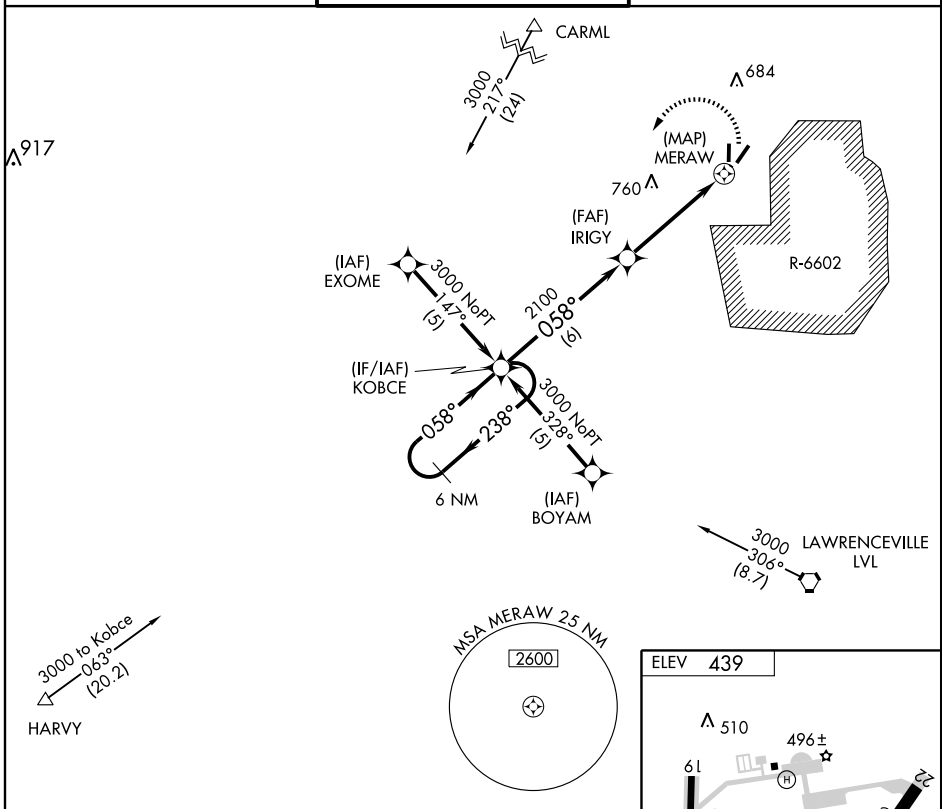
**▽** Use Mecklenburg-Brunswick Rgnl altimeter setting.  
**△ NA** Circling NA East of Rwy 4-22. DME/DME RNP-0.3 NA.

MISSED APPROACH: Climbing left turn to 3000 direct KOBCE and hold.

WASHINGTON CENTER  
**118.75 353.9**

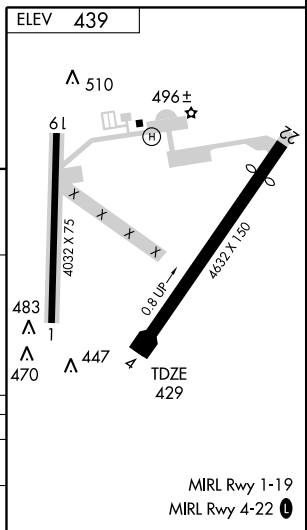
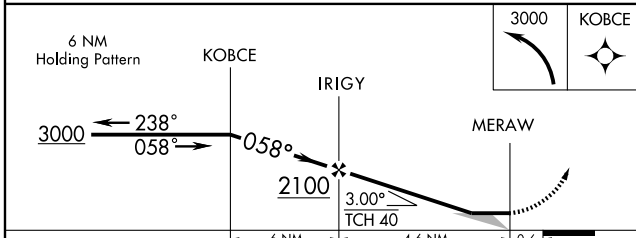
BLACKSTONE TOWER \*  
**126.2 241.0**

CTAF **122.95**



NE-3, 22 OCT 2009 to 19 NOV 2009

NE-3, 22 OCT 2009 to 19 NOV 2009



CATEGORY	A	B	C	D
LNAV MDA	940-1	511 (600-1)	940-1½ 511 (600-1½)	NA
CIRCLING	940-1	501 (600-1)	940-1½ 501 (600-1½)	NA

BLACKSTONE, VIRGINIA  
 Orig 09015

BLACKSTONE/ALLEN C. PERKINSON BLACKSTONE AAF (BKT)  
 37°04'N - 77°57'W

# RNAV (GPS) RWY 4

MIRL Rwy 1-19  
 MIRL Rwy 4-22 **1**