

NDB or GPS-A

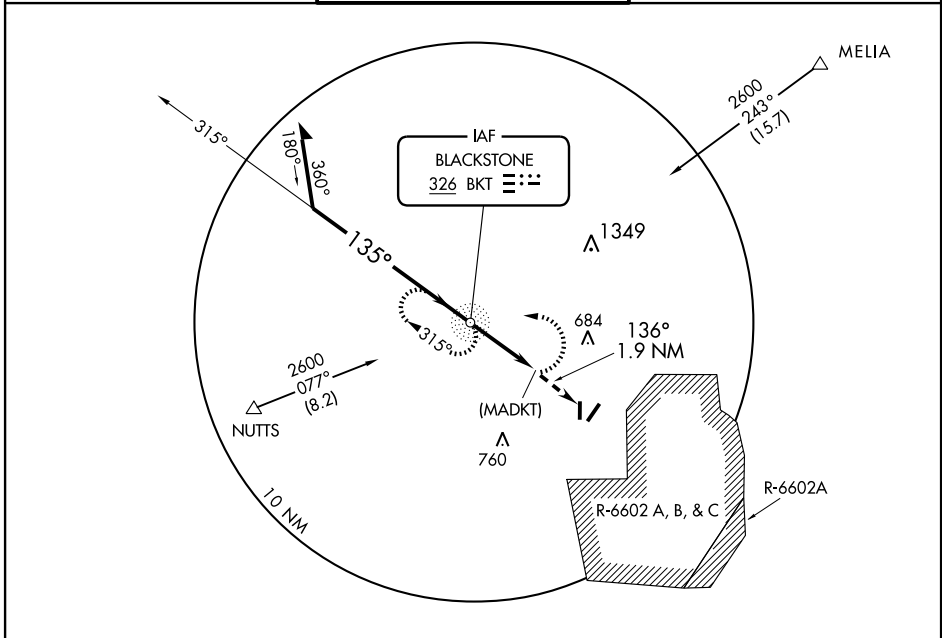
BLACKSTONE/ALLEN C. PERKINSON BLACKSTONE AAF (BKT)

NDB BKT 326	APP CRS 135°	Rwy Idg TDZE Apt Elev	N/A N/A 439
-----------------------	------------------------	-----------------------------	--

▼ Use Mecklenburg-Brunswick Rgnl altimeter setting. Circling not authorized east of Rwy 4-22.
▲ NA Fly visual to airport, 136° - 1.9 NM.

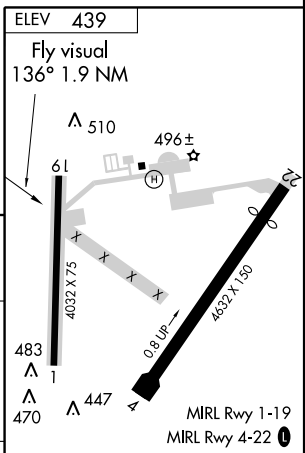
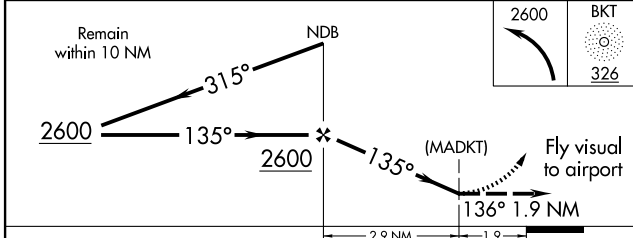
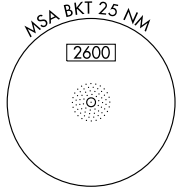
MISSED APPROACH: Climbing left turn to 2600 direct BKT NDB and hold.

WASHINGTON CENTER 118.75 353.9	BLACKSTONE TOWER * 126.2 241.0	CTAF 122.95
--	--	--------------------



NE-3, 22 OCT 2009 to 19 NOV 2009

NE-3, 22 OCT 2009 to 19 NOV 2009



CATEGORY	A	B	C	D	FAF to MAP 2.9 NM						
CIRCLING	1100-2¼		661 (700-2¼)		NA	Knots	60	90	120	150	180
						Min:Sec	2:54	1:56	1:27	1:10	0:58

NDB or GPS-A