

BLACKSTONE, VIRGINIA

NDB-B

NDB BKT <b>326</b>	APCH CRS <b>135°</b>	Rwy Idg TDZE Arpt Elev <b>NA NA 439</b>	AL-52 [USA]	BLACKSTONE/ ALLEN C. PERKINSON BAAF (BKT)
-----------------------	-------------------------	---	-------------	--

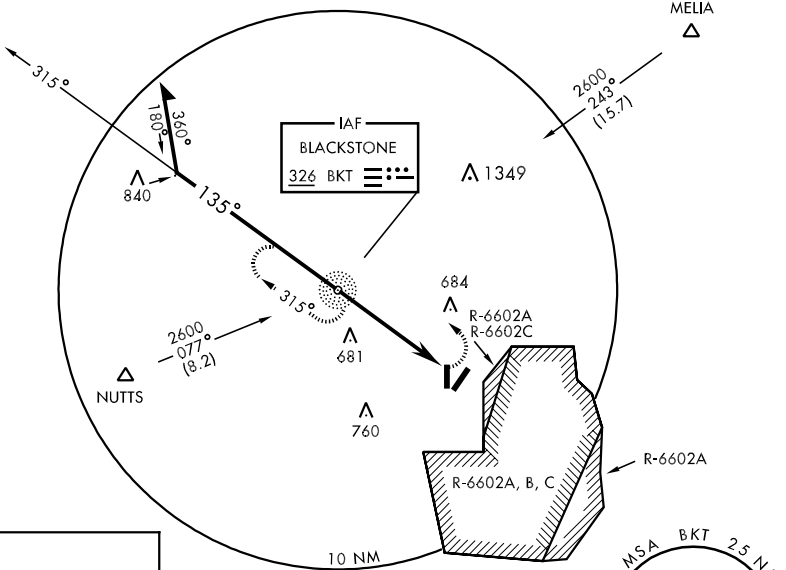
▼ \* Circling not authorized East of Rwy 4-22.  
Use Mecklenburg-Brunswick Regional altimeter setting.

MISSED APPROACH: Climbing left turn to 2600 direct BKT NDB and hold.

WASHINGTON CENTER <b>118.75 353.9</b>	BLACKSTONE TOWER <b>126.2 241.0</b>	UNICOM <b>122.95 (CTAF)</b>
--	--	--------------------------------

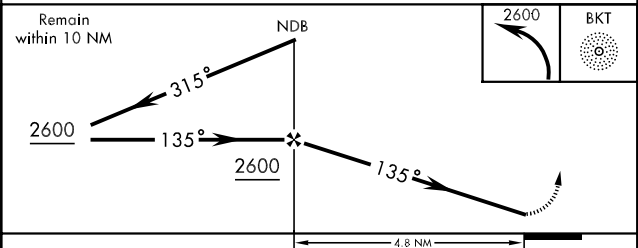
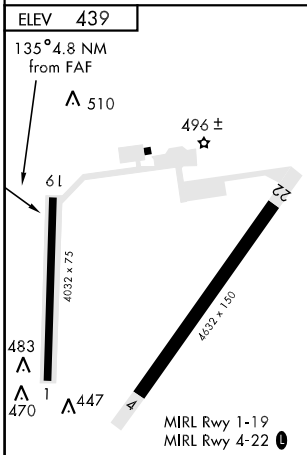
NOT FOR CIVIL USE

△  
725



NE-3, 22 OCT 2009 to 19 NOV 2009

NE-3, 22 OCT 2009 to 19 NOV 2009



FAF to MAP 4.8 NM					CATEGORY	A	B	C	D
Knots	60	90	120	150	180	1040-1	601 (700-1)	1040-1 $\frac{3}{4}$ 601 (700-1 $\frac{3}{4}$ )	1040-2 601 (700-2)
Min:Sec	4:48	3:12	2:24	1:55	1:36	CIRCLING *			

BLACKSTONE, VIRGINIA  
Orig 06271

37°04'N-77°57'W

BLACKSTONE/  
ALLEN C. PERKINSON BAAF (BKT)

NDB-B