

RNAV (GPS) RWY 31

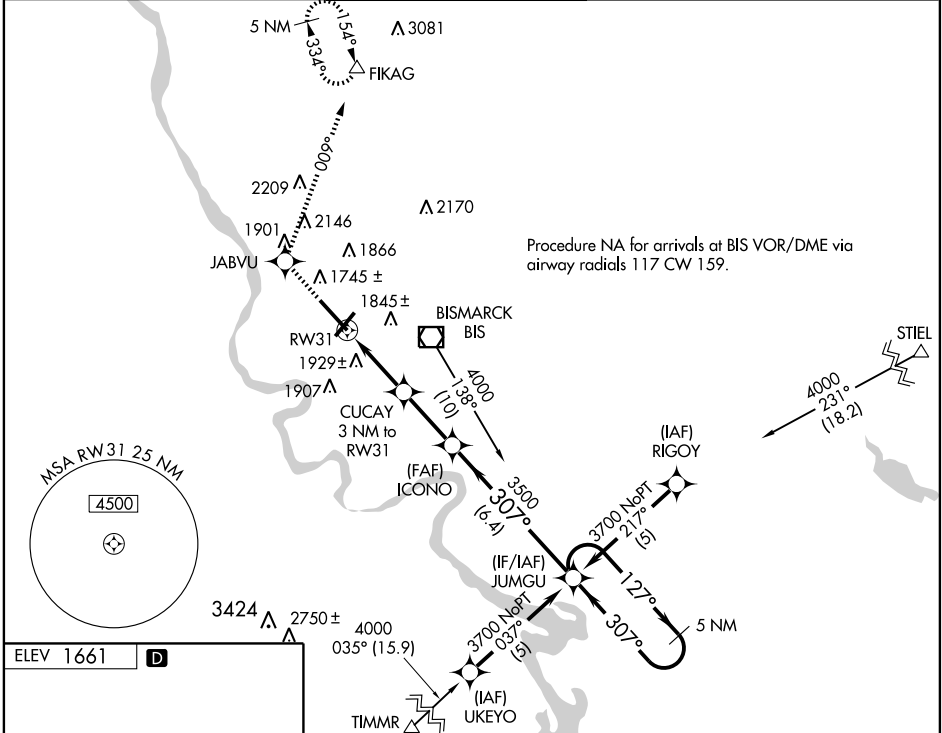
BISMARCK MUNI (BIS)

WAAS CH 56599 W31A	APP CRS 307°	Rwy Idg TDZE 1645 Apt Elev 1661	8794
--	------------------------	---	-------------

ASR For inoperative MALSR, increase LPV all Cats visibility to 1.
Baro-VNAV NA below -18°C (0°F). DME/DME RNP-0.3 NA.
If local altimeter setting not received, procedure NA.

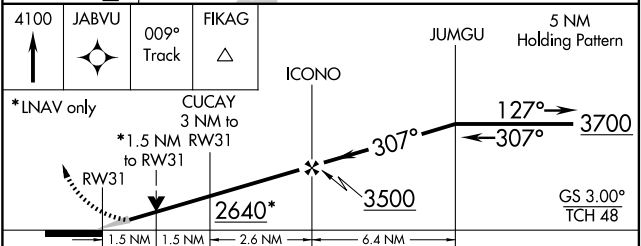
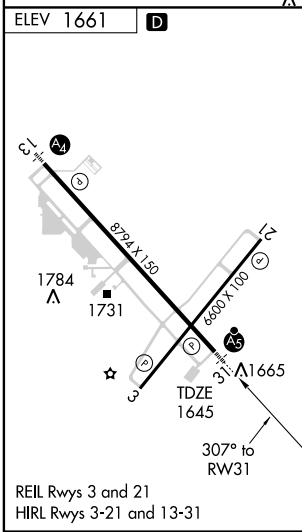
MALSR
MISSED APPROACH: Climb to 4100 direct JABVU and via 009° track to FIKAG and hold.

ATIS 119.35	BISMARCK APP CON* 126.3 298.9	BISMARCK TOWER* 118.3 (CTAF) 257.8	GND CON 121.9	UNICOM 122.95
-----------------------	---	--	-------------------------	-------------------------



NC-1, 22 OCT 2009 to 19 NOV 2009

NC-1, 22 OCT 2009 to 19 NOV 2009



CATEGORY	A	B	C	D
LPV DA		1909/24	264 (300-1/2)	
LNAV/VNAV DA		2268-1 3/4	623 (700-1 3/4)	
LNAV MDA	2180/24	535 (600-1/2)	2180/50 535 (600-1)	2180/60 535 (600-1 1/4)
CIRCLING	2280-1	619 (700-1)	2280-1 3/4 619 (700-1 3/4)	2320-2 659 (700-2)