

# RNAV (GPS) RWY 21

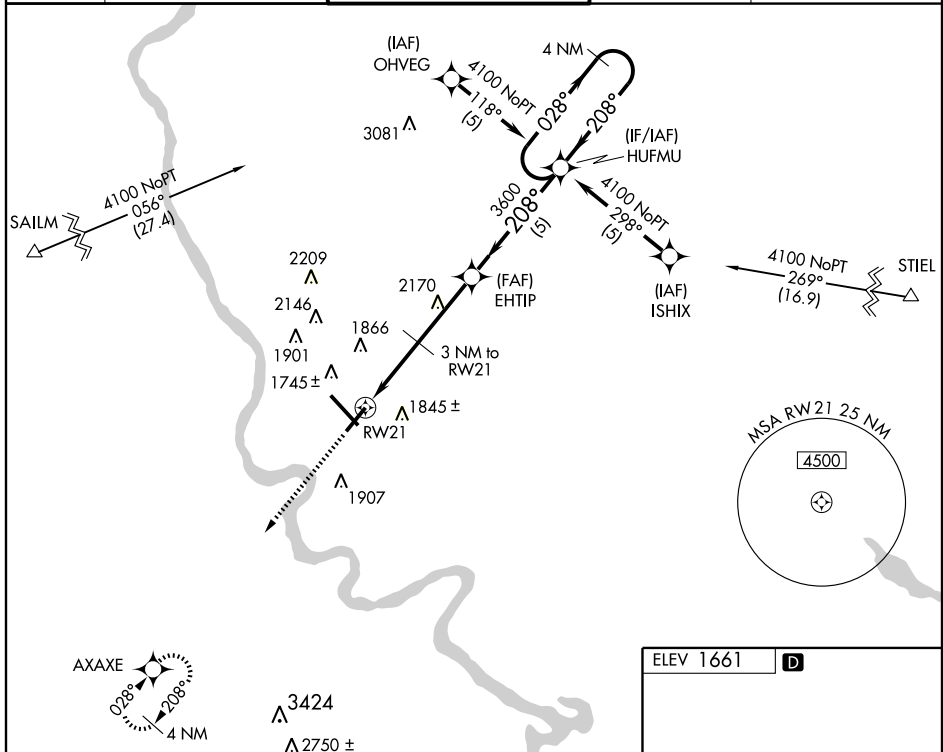
BISMARCK MUNI (BIS)

APP CRS <b>208°</b>	Rwy Idg <b>6600</b>
	TDZE <b>1661</b>
	Apt Elev <b>1661</b>

**NA** GPS or RNP-0.3 required. DME/DME RNP-0.3 NA. MISSED APPROACH: Climb to 4500 direct AXAXE WP and hold.

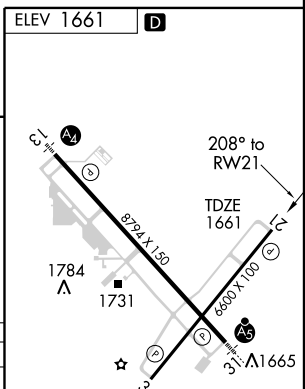
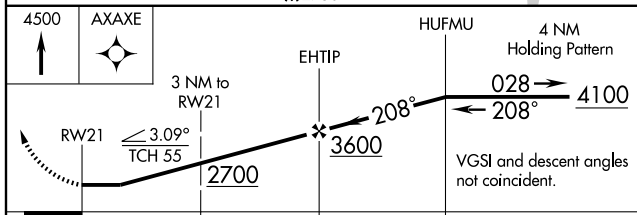
ASR

ATIS <b>119.35</b>	BISMARCK APP CON* <b>126.3 298.9</b>	BISMARCK TOWER* <b>118.3 (CTAF) 0 257.8</b>	GND CON <b>121.9</b>	UNICOM <b>122.95</b>
-----------------------	---	--	-------------------------	-------------------------



NC-1, 22 OCT 2009 to 19 NOV 2009

NC-1, 22 OCT 2009 to 19 NOV 2009



CATEGORY	A		B		C		D	
GLS DA	NA							
LNAV/VNAV	NA							
LNAV MDA	2120-1	459 (500-1)	2120-1¼	459 (500-1¼)	2120-1½	459 (500-1½)		
CIRCLING	2180-1	519 (600-1)	2200-1	539 (600-1)	2220-1½	559 (600-1½)	2240-2	579 (600-2)

REIL Rwy 3 and 21  
HIRL Rwy 3-21 and 13-31