

# ILS or LOC RWY 31

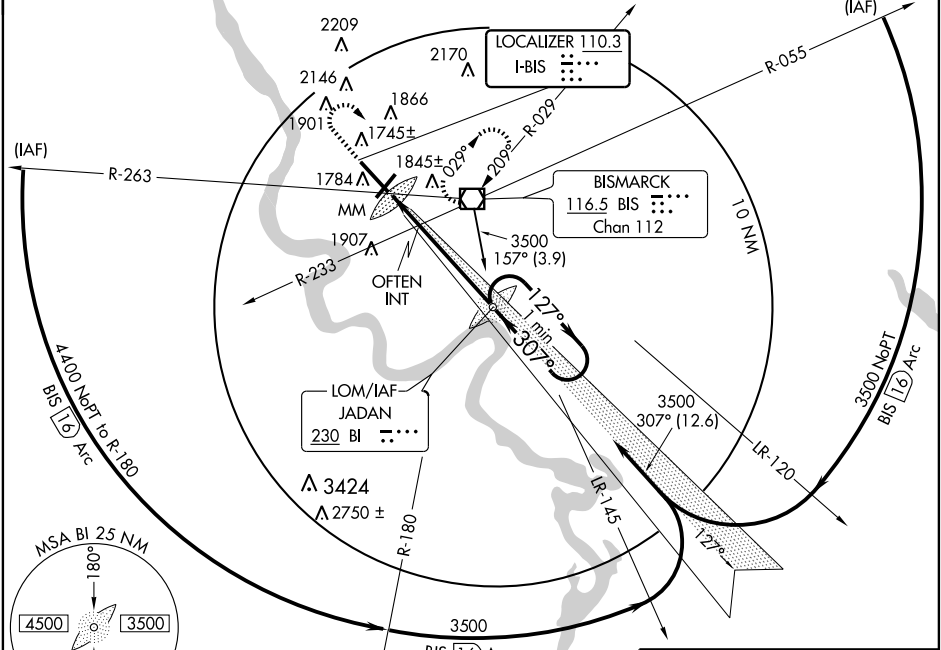
BISMARCK MUNI (BIS)

LOC I-BIS <b>110.3</b>	APP CRS <b>307°</b>	Rwy Idg <b>8794</b>
		TDZE <b>1645</b>
		Apt Elev <b>1661</b>

**⚠** OFTEN INT Cat D increase visibility to 5000 for inoperative MALS. **MALS**  
**⚠** **ASR** **\*\*RVR 1800 authorized with the use of FD or AP or HUD to DA.**

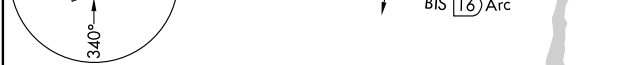
**MISSED APPROACH:** Climb to 2800 then climbing right turn to 3500 direct BIS VOR/DME and hold.

ATIS <b>119.35</b>	BISMARCK APP CON* <b>126.3 298.9</b>	BISMARCK TOWER* <b>118.3 (CTAF) 0 257.8</b>	GND CON <b>121.9</b>	UNICOM <b>122.95</b>
-----------------------	---	--	-------------------------	-------------------------

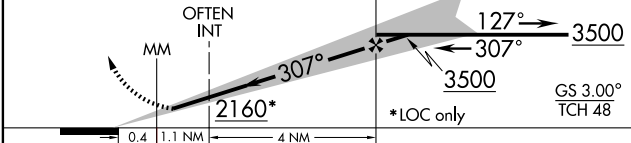


NC-1, 22 OCT 2009 to 19 NOV 2009

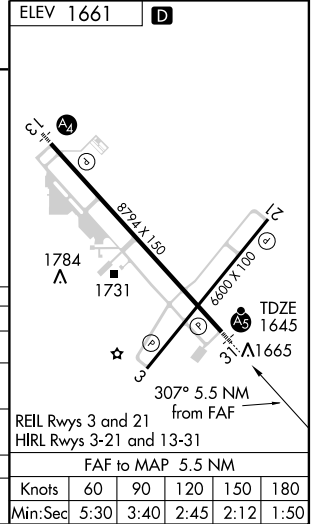
NC-1, 22 OCT 2009 to 19 NOV 2009



2800	3500	BIS	LOM	One Minute Holding Pattern
↑	↷		3480	
		116.5		



CATEGORY	A	B	C	D
S-ILS 31	** 1844/24		200 (200-½)	
S-LOC 31	2160/24	515 (500-½)	2160/50 515 (500-1)	2160/60 515 (500-1¼)
CIRCLING	2180-1 519 (600-1)	2200-1 539 (600-1)	2220-1½ 559 (600-1½)	2240-2 579 (600-2)
OFTEN INT MINIMUMS				
S-LOC 31	1980/24 335 (400-½)			1980/40 335 (400-¾)



Knots	60	90	120	150	180
Min:Sec	5:30	3:40	2:45	2:12	1:50