

WAAS CH 82014 W06A	APP CRS 058°	Rwy Idg 12002 TDZE 606 Apt Elev 650
--	------------------------	--

RNAV (GPS) RWY 6

BIRMINGHAM-SHUTTLESWORTH INTL (BHM)

⚠ For uncompensated Baro-VNAV systems, LNAV/VNAV NA below -16°C (4°F) or above 47°C (116°F). DME/DME RNP-0.3 NA.

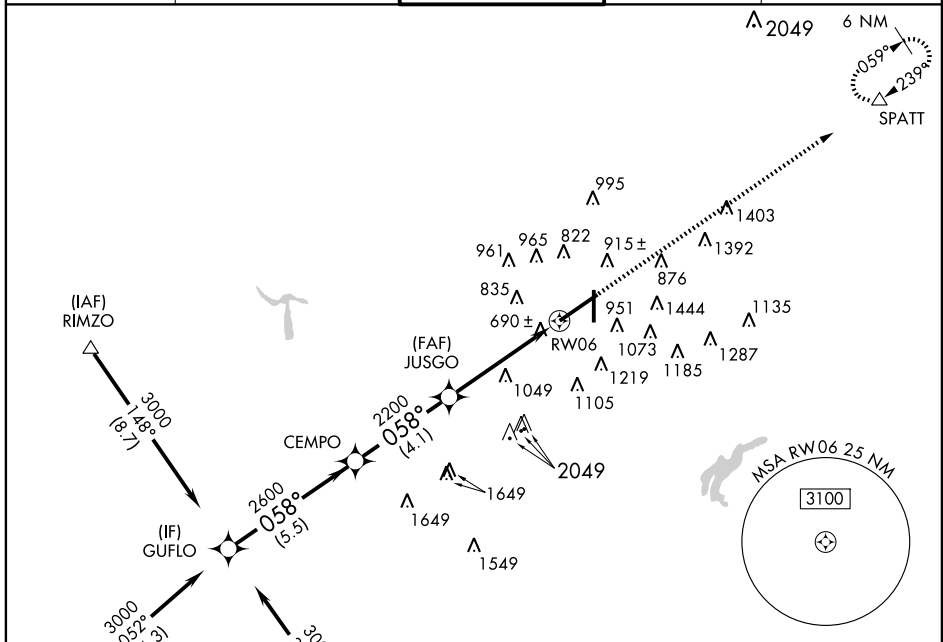
ALSF-2
A

MISSED APPROACH:
Climb to 3300 direct SPATT and hold.

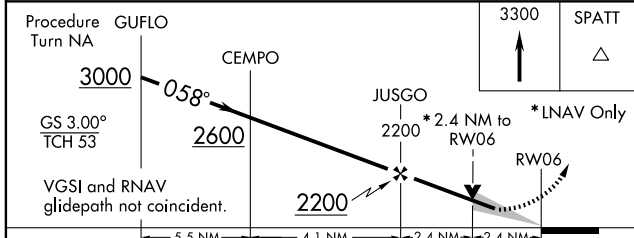
ATIS 119.4 270.1	BIRMINGHAM APP CON 123.8 385.6	BIRMINGHAM TOWER 119.9 317.725	GND CON 121.7 348.6	CLNC DEL 125.675 390.8
----------------------------	--	--	-------------------------------	----------------------------------

SE-4, 22 OCT 2009 to 19 NOV 2009

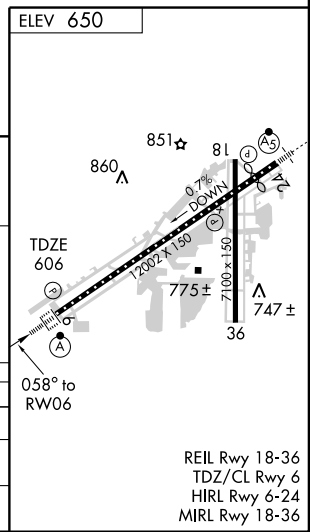
SE-4, 22 OCT 2009 to 19 NOV 2009



Procedure NA for arrivals at HEENA via V115 southbound.



CATEGORY	A	B	C	D
LPV DA		806/24	200 (200-½)	
LNNAV/ VNAV DA		1120/60	514 (500-1¼)	
LNNAV MDA	1440/24 834 (800-½)	1440/40 834 (800-¾)	1440-2 834 (800-2)	1440-2¼ 834 (800-2¼)



REIL Rwy 18-36
TDZ/CL Rwy 6
HIRL Rwy 6-24
MIRL Rwy 18-36