

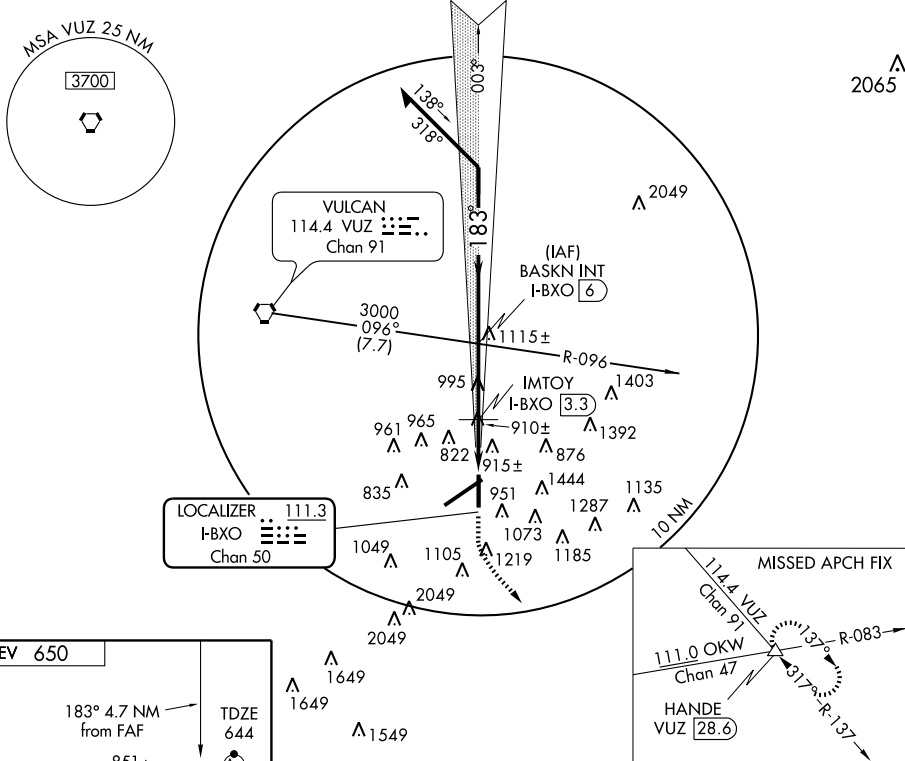
LOC/DME I-BXO 111.3 Chan 50	APP CRS 183°	Rwy ldg 7100 TDZE 650 Apt Elev 644
-------------------------------------------------	------------------------	---------------------------------------------------------------

LOC RWY 18

BIRMINGHAM-SHUTTLESWORTH INTL (BHM)

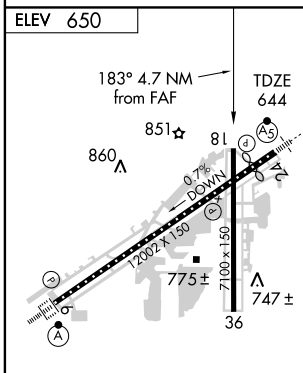
▽ MISSED APPROACH: Climb to 3800 via heading 181° and VUZ R-137 to HANDE Int/VUZ 28.6 DME and hold.

ATIS 119.4 270.1	BIRMINGHAM APP CON 123.8 385.6	BIRMINGHAM TOWER 119.9 317.725	GND CON 121.7 348.6	CLNC DEL 125.675 390.8
----------------------------	------------------------------------------	------------------------------------------	-------------------------------	----------------------------------



SE-4, 22 OCT 2009 to 19 NOV 2009

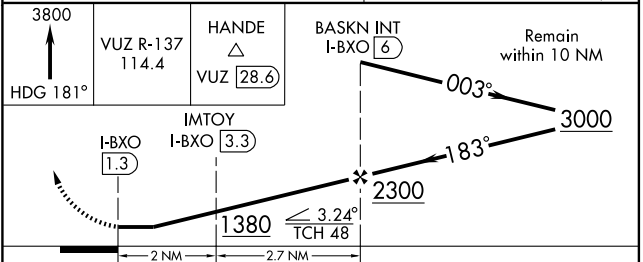
SE-4, 22 OCT 2009 to 19 NOV 2009



REIL Rwy 18-36
TDZ/CL Rwy 6
HIRL Rwy 6-24
MIRL Rwy 18-36

FAF to MAP 4.7 NM

Knots	60	90	120	150	180
Min:Sec	4:42	3:08	2:21	1:53	1:34



CATEGORY	A	B	C	D
S-18	1380-1 736 (800-1)		1380-2 736 (800-2)	1380-2½ 736 (800-2½)
IMTOY FIX MINIMUMS				
S-18	1200-1 556 (600-1)		1200-1½ 556 (600-1½)	1200-1¾ 556 (600-1¾)