

LOC -BHM 110.3	APP CRS 058°	Rwy Idg 12002
		TDZE 606
		Apt Elev 650

ILS or LOC RWY 6

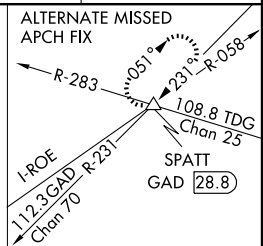
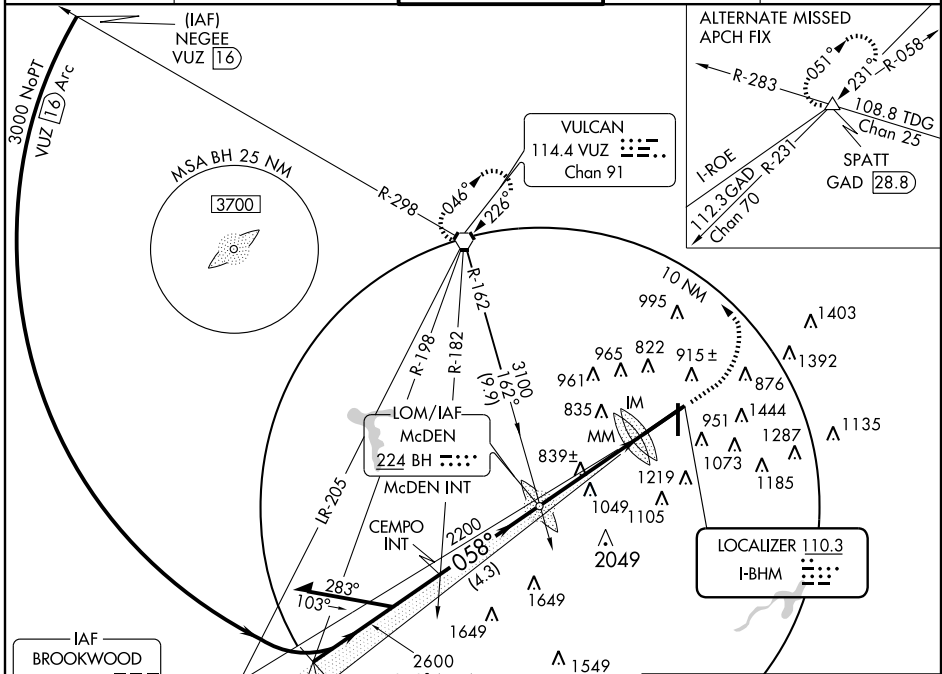
BIRMINGHAM-SHUTTLESWORTH INTL (BHM)

▼ For inoperative ALSF, increase S-ILS 6 Cat E visibility to RVR 4000 and S-LOC 6 Cat E visibility to 1 3/4 Cat E procedure turn NA.



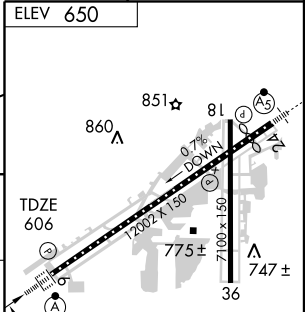
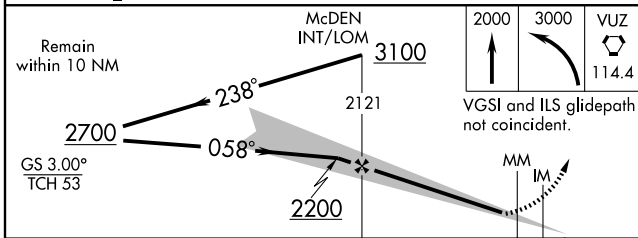
MISSED APPROACH: Climb to 2000 then climbing left turn to 3000 direct VUZ VORTAC and hold.

ATIS 119.4 270.1	BIRMINGHAM APP CON 123.8 385.6	BIRMINGHAM TOWER 119.9 317.725	GND CON 121.7 348.6	CLNC DEL 125.675 390.8
----------------------------	--	--	-------------------------------	----------------------------------



IAF
BROOKWOOD
111.0 OKW
Chan 47

Procedure NA for arrivals at OKW VORTAC via V66 westbound.



CATEGORY	A	B	C	D	E	
	S-ILS 6 806/18 200 (200-1/2)					
S-LOC 6	1120/24	514 (500-1/2)	1120/50 514 (500-1)	1120/60	514 (500-1 1/4)	
	FAF to MAP 4.5 NM					
Knots		60	90	120	150	180
Min:Sec		4:30	3:00	2:15	1:48	1:30

SE-4, 22 OCT 2009 to 19 NOV 2009

SE-4, 22 OCT 2009 to 19 NOV 2009