

LOC I-BHM 110.3	APP CRS 058°	Rwy Idg 12002 TDZE 606 Apt Elev 650
---------------------------	------------------------	--

ILS RWY 6 (CAT II)

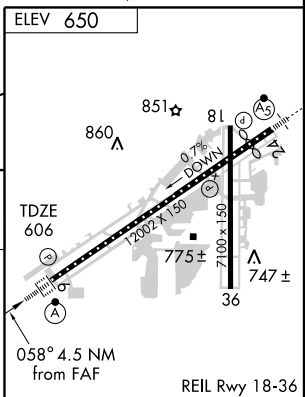
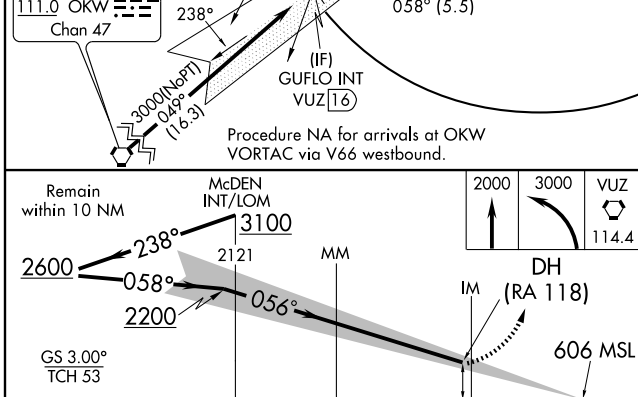
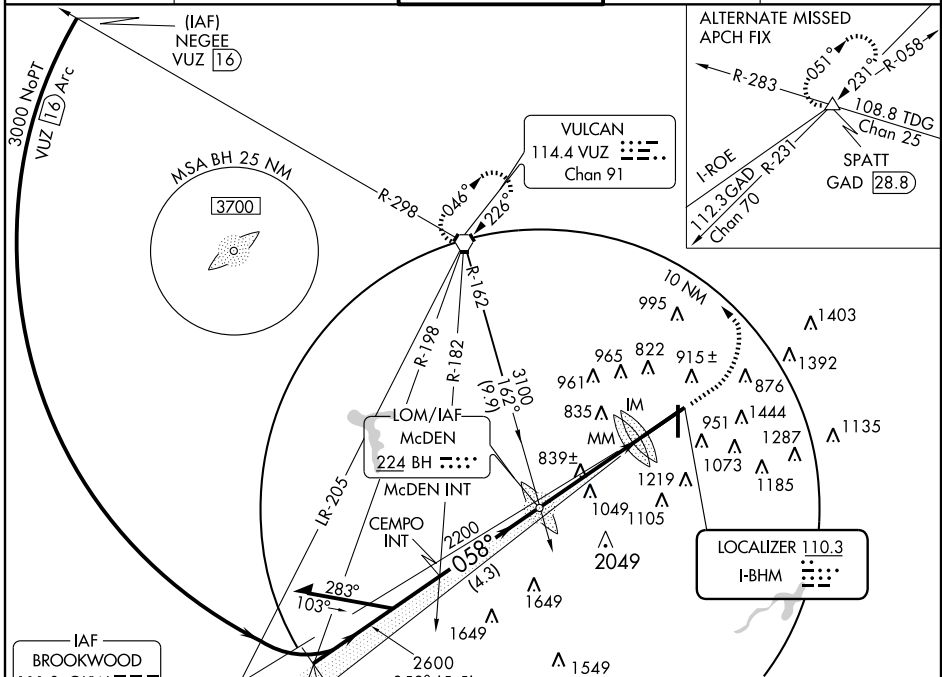
BIRMINGHAM-SHUTTLESWORTH INTL (BHM)

▼ For inoperative ALSF, increase S-ILS 6 Cat E visibility to RVR 4000 and S-LOC 6 Cat E visibility to 1 3/4. Cat E procedure turn NA.

ALSF-2

MISSED APPROACH: Climb to 2000 then climbing left turn to 3000 direct VUZ VORTAC and hold.

ATIS 119.4 270.1	BIRMINGHAM APP CON 123.8 385.6	BIRMINGHAM TOWER 119.9 317.725	GND CON 121.7 348.6	CLNC DEL 125.675 390.8
----------------------------	--	--	-------------------------------	----------------------------------



CATEGORY	A	B	C	D	
S-ILS 6	706/12 100 RA 118				
CATEGORY II ILS- SPECIAL AIRCREW & AIRCRAFT CERTIFICATION REQUIRED					
FAF to MAP 4.5 NM					
Knots	60	90	120	150	180
Min:Sec	4:30	3:00	2:15	1:48	1:30

SE-4, 22 OCT 2009 to 19 NOV 2009

SE-4, 22 OCT 2009 to 19 NOV 2009