

BILOXI, MISSISSIPPI

VOR/DME-B or TACAN-B

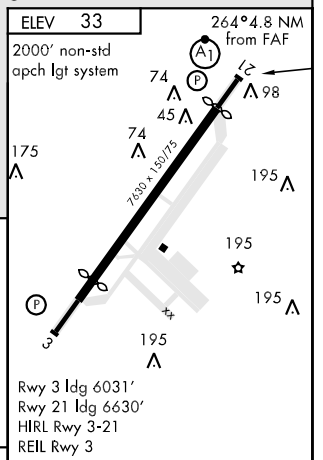
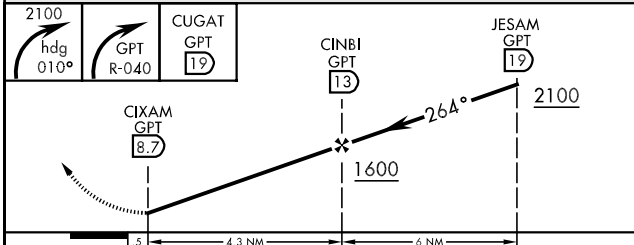
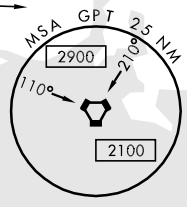
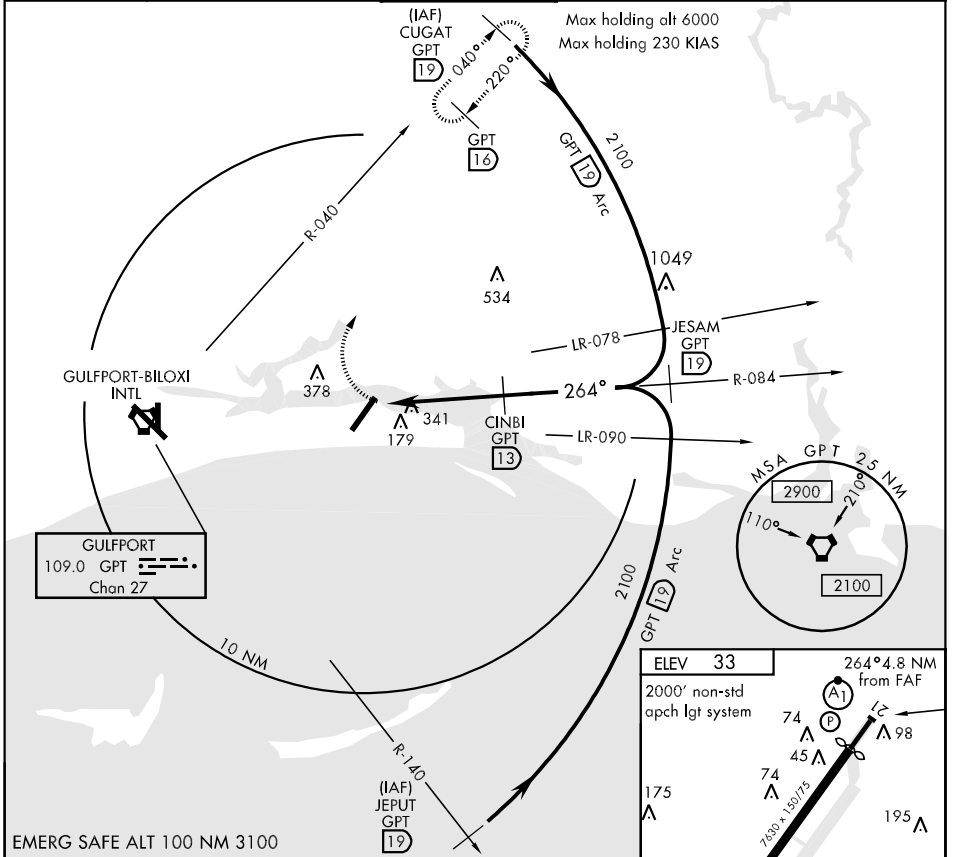
VORTAC GPT 109.0 Chan 27	APCH CRS 264°	Rwy ldg TDZE Arpt Elev	N/A N/A 33
--	-------------------------	---------------------------	---------------------------------------

AL-49 [USAF]

KEESLER AFB (KBIX)

▽ MISSED APPROACH: Turn right heading 010° to 2100 intcp GPT VORTAC R-040 to CUGAT (R-040/19 DME) and hold.

ATIS 281.55	GULFPORT APP CON 124.6 354.1 (130°-309°) 127.5 254.25 (310°-129°)	KEESLER TOWER ★ 120.75 269.075	GND CON 121.8 275.8	CLNC DEL 121.8 275.8
-----------------------	---	--	-------------------------------	--------------------------------



CATEGORY	A	B	C	D
CIRCLING	660-1 627 (700-1)	700-1 667 (700-1)	700-1¼ 667 (700-1¼)	740-2¼ 707 (800-2¼)

FAF to MAP 4.3 NM					
Knots	60	90	120	150	180
Min:Sec	4:18	2:52	2:09	1:43	1:26

BILOXI, MISSISSIPPI

30° 25' N-88° 55' W

KEESLER AFB (KBIX)

Amdt 3 09071

VOR/DME-B or TACAN-B

SC-4, 22 OCT 2009 to 19 NOV 2009

SC-4, 22 OCT 2009 to 19 NOV 2009