

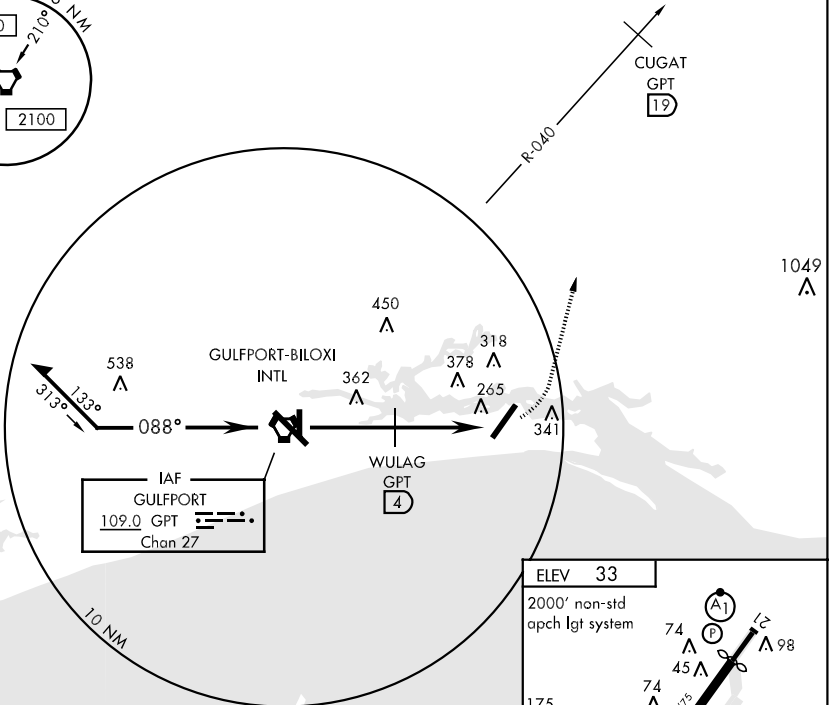
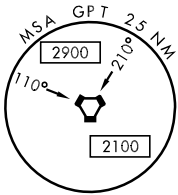
BILOXI, MISSISSIPPI

VOR/DME-A

VORTAC GPT <b>109.0</b> Chan <b>27</b>	APCH CRS <b>088°</b>	Rwy Idg TDZE Arpt Elev <b>N/A</b> <b>N/A</b> <b>33</b>	AL-49 [USAF]	KEESLER AFB (KBIX)
--	-------------------------	--	--------------	--------------------

MISSED APPROACH: Turn left heading 010° to 2100 intcpt GPT VORTAC R-040 to CUGAT (R-040/19 DME).

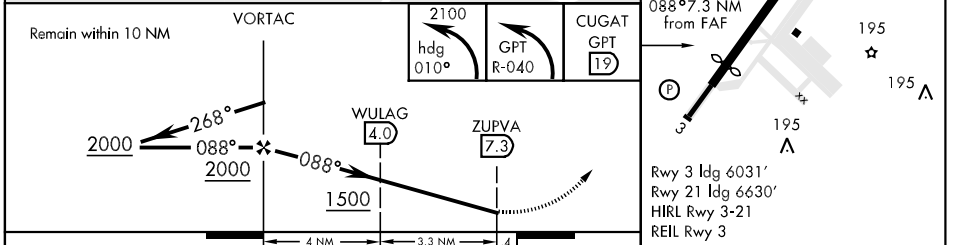
ATIS <b>281.55</b>	GULFPORT APP CON <b>124.6 354.1</b> (130°-309°) <b>127.5 254.25</b> (310°-129°)	KEESLER TOWER ★ <b>120.75 269.075</b>	GND CON <b>121.8 275.8</b>	CLNC DEL <b>121.8 275.8</b>
-----------------------	---	--	-------------------------------	--------------------------------



SC-4, 22 OCT 2009 to 19 NOV 2009

SC-4, 22 OCT 2009 to 19 NOV 2009

EMERG SAFE ALT 100 NM 3100



CATEGORY	A	B	C	D	FAF to MAP 7.3 NM					
CIRCLING	1040-1¼ 1007 (1100-1¼)	1040-1½ 1007 (1100-1½)	1040-3	1007 (1100-3)	Knots	60	90	120	150	180
					Min:Sec	7:18	4:52	3:39	2:55	2:26

BILOXI, MISSISSIPPI 30° 25' N-88° 55' W KEESLER AFB (KBIX)

09211 VOR/DME-A