

RNAV (GPS) RWY 7

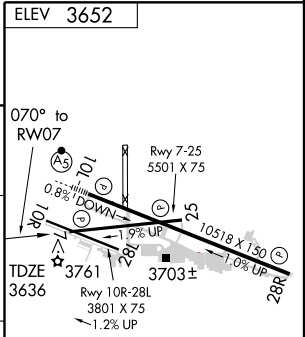
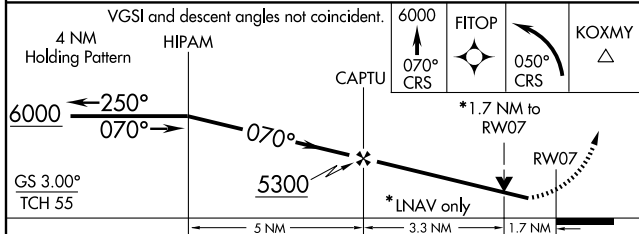
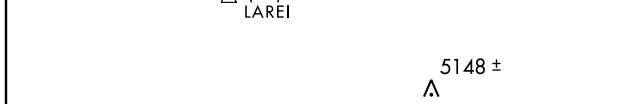
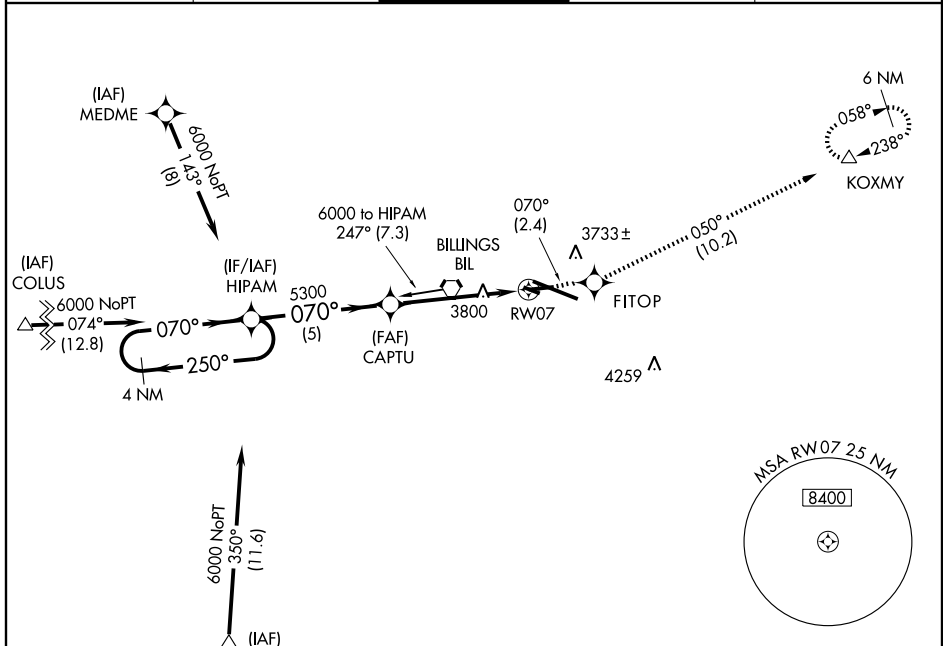
BILLINGS LOGAN INTL (BIL)

APP CRS	Rwy Idg	5501
070°	TDZE	3636
	Apt Elev	3652

▼ For uncompensated Baro-VNAV systems, LNAV/VNAV NA below -22°C (-7°F) or above 41°C (105°F). DME/DME RNP-0.3 NA.

MISSED APPROACH: Climb to 6000 via 070° course to FITOP, then left turn via 050° course to KOXMY and hold.

ATIS 126.3	BILLINGS APP CON 120.5 284.6	BILLINGS TOWER 127.2 257.8	GND CON 121.9	CLNC DEL 121.9
----------------------	--	--------------------------------------	-------------------------	--------------------------



CATEGORY	A	B	C	D
GLS PA DA	NA			
LNAV/VNAV DA	4209-2 573 (600-2)			
LNAV MDA	4220-1 584 (600-1)	4220-1 1/2 584 (600-1 1/2)	4220-1 3/4 584 (600-1 3/4)	
CIRCLING	4220-1 568 (600-1)	4220-1 1/2 568 (600-1 1/2)	4220-2 568 (600-2)	

ELEV 3652

REIL Rwy 25 and 28R
HIRL Rwy 10L-28R
MIRL Rwy 7-25 and 10R-28L

NW-1, 22 OCT 2009 to 19 NOV 2009

NW-1, 22 OCT 2009 to 19 NOV 2009