

BILLINGS, MONTANA

AL-48 (FAA)

RNAV (GPS) RWY 28R

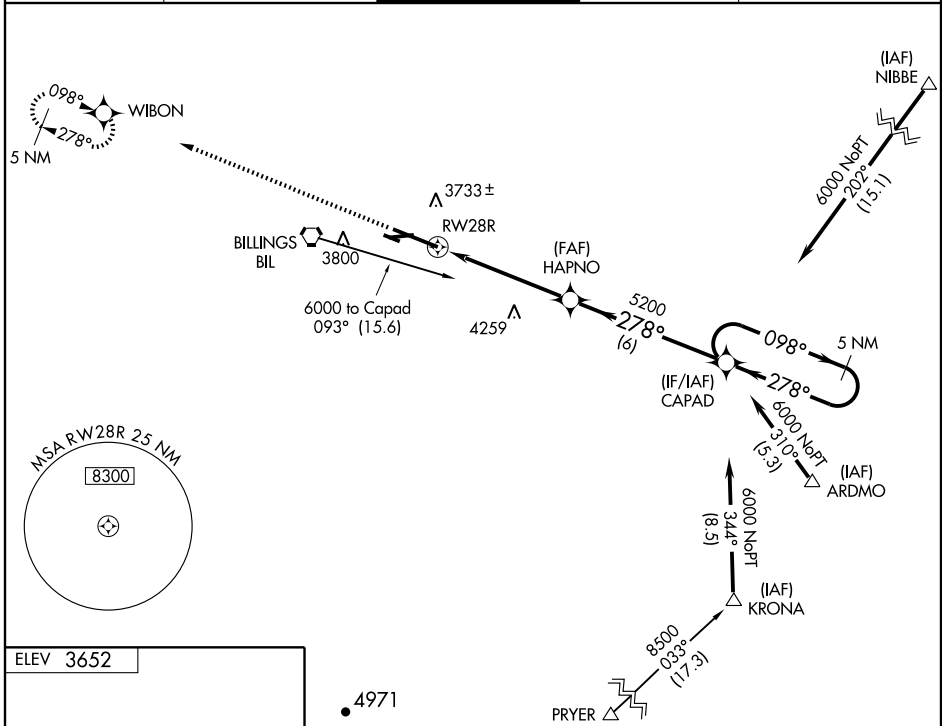
BILLINGS LOGAN INTL (BIL)

WAAS CH 56222 W28A	APP CRS 278°	Rwy Idg 10518 TDZE 3517 Apt Elev 3652
--	------------------------	--

▽ For uncompensated Baro-VNAV systems, LNAV/VNAV
▲ NA below -22°C (-7°F) or above 41°C (105°F).
 DME/DME RNP- 0.3 NA

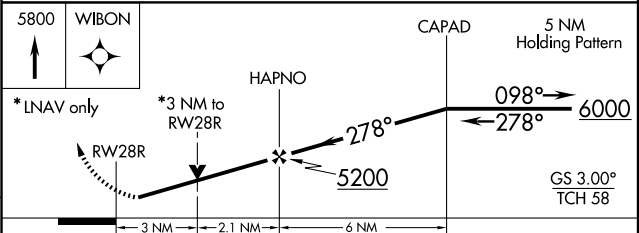
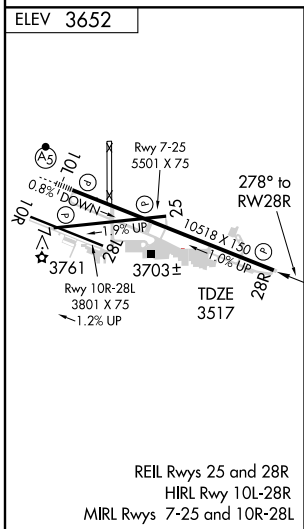
MISSED APPROACH: Climb to 5800 direct WIBON and hold.

ATIS 126.3	BILLINGS APP CON 120.5 284.6	BILLINGS TOWER 127.2 257.8	GND CON 121.9	CLNC DEL 121.9
----------------------	--	--------------------------------------	-------------------------	--------------------------



NW-1, 22 OCT 2009 to 19 NOV 2009

NW-1, 22 OCT 2009 to 19 NOV 2009



CATEGORY	A	B	C	D
LPV DA		3770-1	253 (200-1)	
LNAV/VNAV DA		3840-1¼	323 (200-1¼)	
LNAV MDA	4500-1¼ 983 (900-1¼)	4500-1½ 983 (900-1½)	4500-3	983 (900-3)
CIRCLING	4500-1¼ 848 (900-1¼)	4500-1½ 848 (900-1½)	4500-3	848 (900-3)

BILLINGS, MONTANA
 Amdt 1A 09239

45° 48' N-108° 33' W

RNAV (GPS) RWY 28R