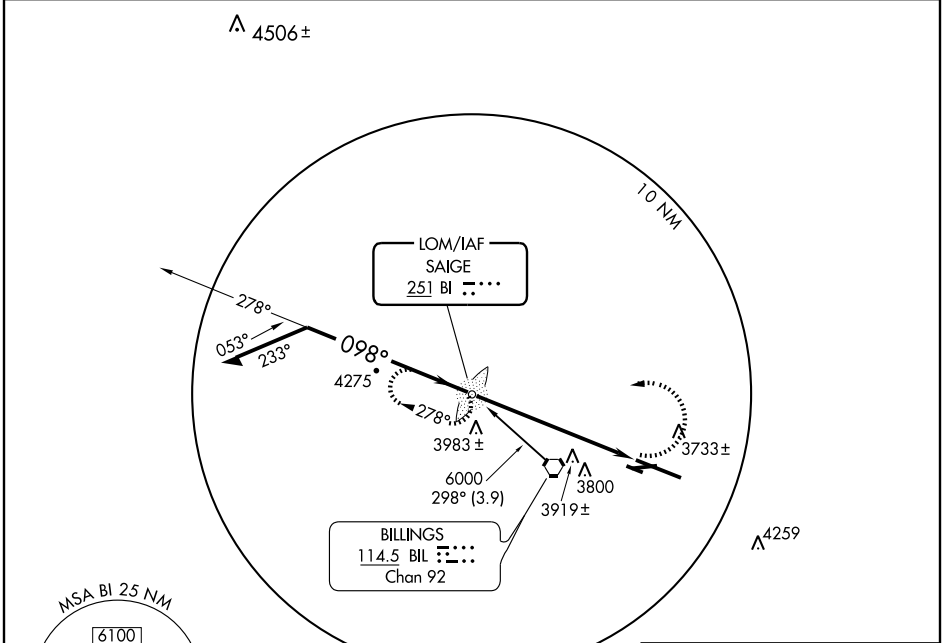


NDB RWY 10L
BILLINGS LOGAN INTL (BIL)

LOM BI 251	APP CRS 098°	Rwy Idg 10518
		TDZE 3584
		Apt Elev 3652

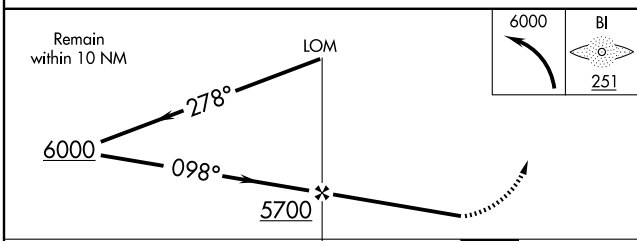
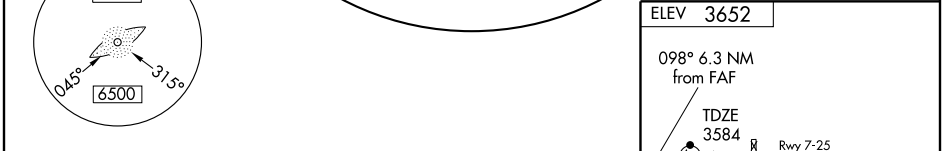
	MALSR	MISSED APPROACH: Climbing left turn to 6000 direct Saige LOM and hold.

ATIS 126.3	BILLINGS APP CON 120.5 284.6	BILLINGS TOWER 127.2 257.8	GND CON 121.9	CLNC DEL 121.9
----------------------	--	--------------------------------------	-------------------------	--------------------------



NW-1, 22 OCT 2009 to 19 NOV 2009

NW-1, 22 OCT 2009 to 19 NOV 2009



CATEGORY	A	B	C	D
S-10L	4300/40 716 (700-¾)		4300-1½ 716 (700-1½)	4300-2 716 (700-2)
CIRCLING	4300-1 648 (700-1)		4300-2 648 (700-2)	4300-2¼ 648 (700-2¼)

ELEV 3652

REIL Rws 25 and 28R
HIRL Rwy 10L-28R
MIRL Rws 7-25 and 10R-28L
FAF to MAP 6.3 NM

Knots	60	90	120	150	180
Min:Sec	6:18	4:12	3:09	2:31	2:06