

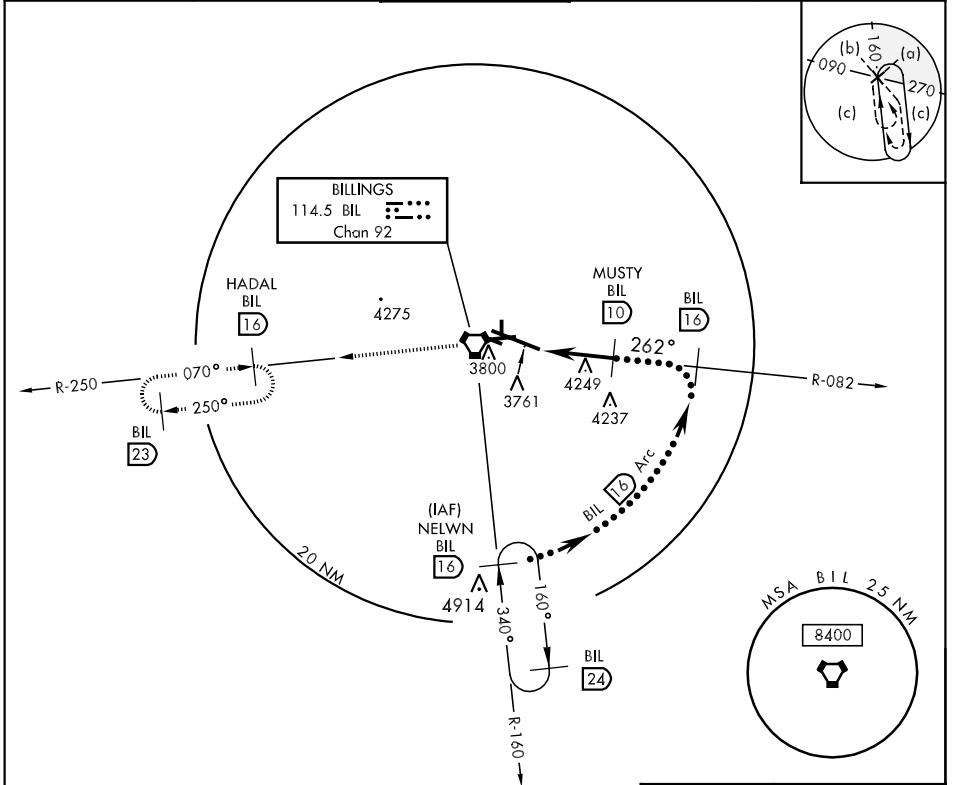
BILLINGS, MONTANA

HI-VOR/DME or TACAN RWY 28R

BILLINGS 114.5 Chan 92	AFCH CRS 262°	Rwy ldg 10,518 TDZE 3517 Arprt Elev 3652	JAL-48 [USAF]	BILLINGS LOGAN INTL (KBIL)
------------------------------	------------------	--	---------------	----------------------------

▽ MISSED APPROACH: Climb to 9000 direct BIL VORTAC then via R-250 to HADAL/16 DME and hold.

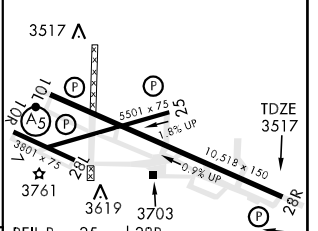
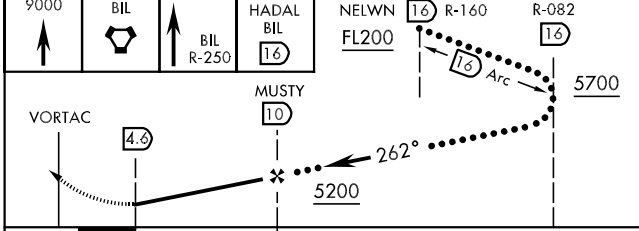
ATIS 126.3	BILLINGS APP CON 120.5 284.6	BILLINGS TOWER 127.2 257.8	GND CON 121.9	CLNC DEL 121.9
---------------	---------------------------------	-------------------------------	------------------	-------------------



NW-1, 22 OCT 2009 to 19 NOV 2009

NW-1, 22 OCT 2009 to 19 NOV 2009

EMERG SAFE ALT 100 NM 15,200 ELEV 3652



CATEGORY	C	D	E		
S-28R	3940-1¼ 423 (300-1¼)	3940-1½ 423 (300-1½)	3940-1½ 423 (300-1½)		
CIRCLING	4180-1½ 528 (600-1½)	4220-2 568 (600-2)	4580-3 928 (1000-3)		
FAF to MAP 5.4 NM					
Knots	120	140	160	180	200
Min:Sec	2:42	2:19	2:01	1:48	1:37

BILLINGS, MONTANA 45°48'N-108°32'W BILLINGS LOGAN INTL (KBIL)

HI-VOR/DME or TACAN RWY 28R

