

VORTAC BGS <b>114.3</b> Chan <b>90</b>	APP CRS <b>359°</b>	Rwy Idg <b>8802</b> TDZE <b>2563</b> Apt Elev <b>2573</b>
--	------------------------	---

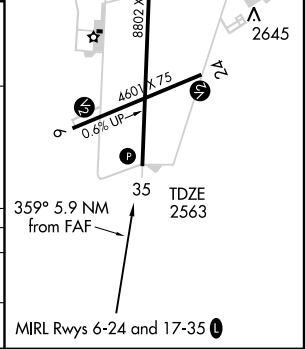
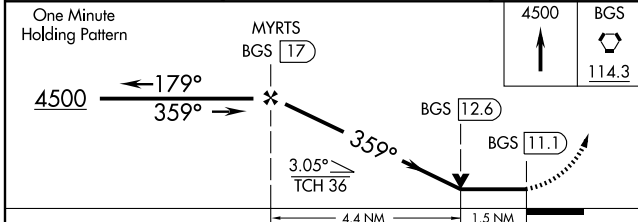
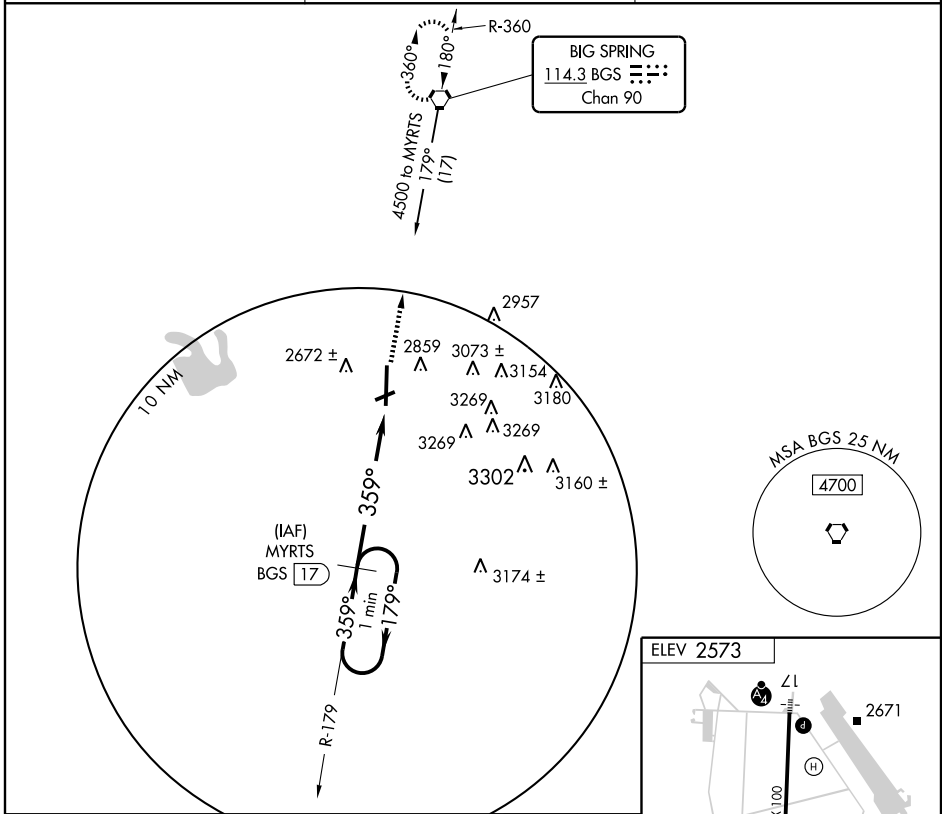
# VOR/DME RWY 35

BIG SPRING McMAHON-WRINKLE (BPG)

**▼** When VGSI inoperative, circling Rwy 6 NA at night. Circling NA east of Rwy 17-35. VDP NA when using Midland Intl altimeter setting. When local altimeter setting not received, use Midland Intl altimeter setting and increase all MDA 140 feet, increase S-35 Cats C and D and circling Cats C and D visibility ¼ mile.

**▲** MISSED APPROACH: Climb to 4500 direct to BGS VORTAC and hold.

AWOS-3 <b>118.025</b>	FORT WORTH CENTER <b>133.7 350.2</b>	UNICOM <b>122.8</b> (CTAF) <b>0</b>
--------------------------	---	--



CATEGORY	A	B	C	D
S-35	3080-1	517 (600-1)	3080-1½ 517 (600-1½)	3080-1¾ 517 (600-1¾)
CIRCLING	3080-1	507 (600-1)	3080-1½ 507 (600-1½)	3140-2 567 (600-2)

SC-2, 22 OCT 2009 to 19 NOV 2009

SC-2, 22 OCT 2009 to 19 NOV 2009