

BIG SPRING, TEXAS

AL-47 (FAA)

# RNAV (GPS) RWY 35

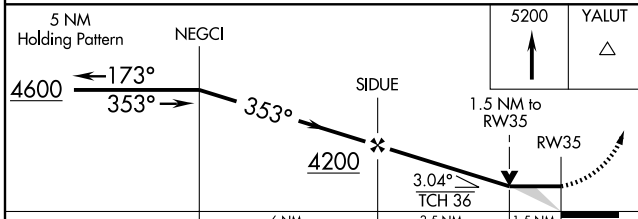
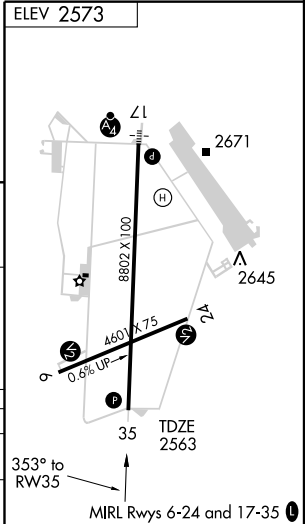
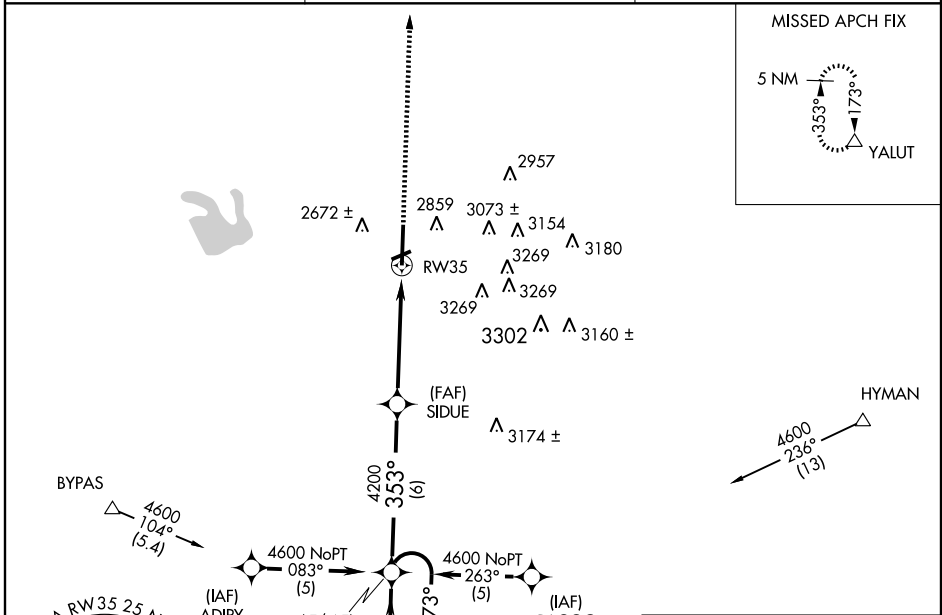
BIG SPRING McMAHON-WRINKLE (BPG)

APP CRS <b>353°</b>	Rwy Idg <b>8802</b>
	TDZE <b>2563</b>
	Apt Elev <b>2573</b>

**▼** When VGSI inoperative, circling Rwy 6 NA at night. Circling NA East of Rwy 17-35. DME/DME RNP-0.3 NA. VDP NA when using Midland Intl altimeter setting. When local altimeter setting not received, use Midland Intl altimeter setting and increase all MDA 140 feet, increase LNAV Cats C and D visibility ½ mile and circling Cats C and D visibility ¼ mile.

**▲** MISSED APPROACH: Climb to 5200 direct YALUT and hold.

AWOS-3 <b>118.025</b>	FORT WORTH CENTER <b>133.7 350.2</b>	UNICOM <b>122.8 (CTAF)</b> <b>📻</b>
--------------------------	---	--



CATEGORY	A	B	C	D
LNAV MDA	3060-1	497 (500-1)	3060-1½ 497 (500-1½)	3060-1½ 497 (500-1½)
CIRCLING	3060-1	487 (500-1)	3060-1½ 487 (500-1½)	3140-2 567 (600-2)

BIG SPRING, TEXAS  
Orig 09043

32° 13' N-101° 31' W

# RNAV (GPS) RWY 35

SC-2, 22 OCT 2009 to 19 NOV 2009

SC-2, 22 OCT 2009 to 19 NOV 2009