

LINDBERGH TWO DEPARTURE

ATIS★
 128.7 256.7
 CLNC DEL
 119.875 263.025
 GND CON
 119.2 275.8
 SCOTT TOWER
 128.25 253.5
 ST LOUIS DEP CON
 125.2 281.5

VICHY
 117.7 VIH :...
 Chan 124
 N38°09.24'-W91°42.41'
 L-16, H-5

MAPLES
 113.4 MAP :...
 Chan 81
 N37°35.45'-W91°47.31'
 L-16

LITTLE ROCK
 113.9 LIT :...
 Chan 86
 N34°40.66'-W92°10.83'
 L-18, H-6

KLAIR
 N38° 24.67'
 W91° 09.61'

(SAGME)
 N38° 18.78'
 W90° 58.09'

WESCO
 N38° 01.28'
 W91° 13.40'

(SALHU)
 N37° 35.66'
 W91° 01.05'

(SAJOY)
 N38° 11.75'
 W90° 33.36'

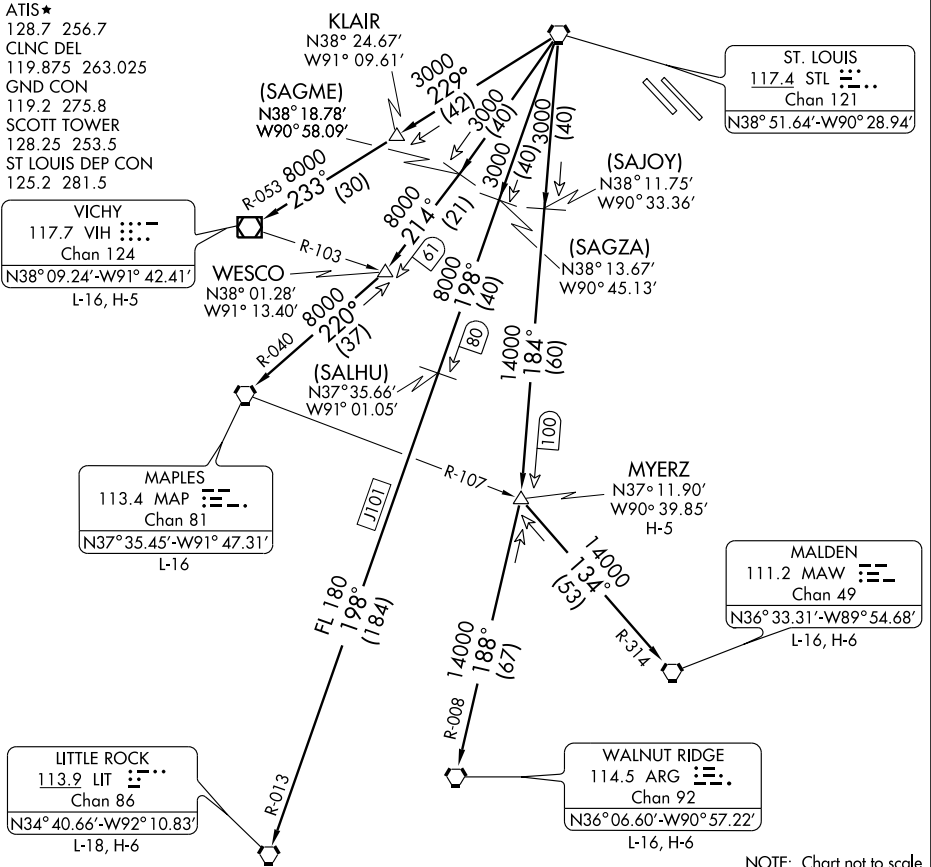
(SAGZA)
 N38° 13.67'
 W90° 45.13'

MYERZ
 N37° 11.90'
 W90° 39.85'
 H-5

MALDEN
 111.2 MAW :...
 Chan 49
 N36° 33.31'-W89° 54.68'
 L-16, H-6

WALNUT RIDGE
 114.5 ARG :...
 Chan 92
 N36° 06.60'-W90° 57.22'
 L-16, H-6

ST. LOUIS
 117.4 STL :...
 Chan 121
 N38° 51.64'-W90° 28.94'



NOTE: Chart not to scale.

DEPARTURE ROUTE DESCRIPTION

Fly assigned heading for vector to appropriate route. Departures climb and maintain 2500 feet or assigned altitude. Expect clearance to filed altitude 10 minutes after departure.

LITTLE ROCK TRANSITION (LINDY2.LIT): From over STL VORTAC via STL R-198 and LIT R-013 to LIT VORTAC.

MALDEN TRANSITION (LINDY2.MAW): From over STL VORTAC via STL R-184 to MYERZ INT, then via MAW R-314 to MAW VORTAC.

MAPLES TRANSITION (LINDY2.MAP): From over STL VORTAC via STL R-214 to WESCO INT, then via MAP R-040 to MAP VORTAC.

MYERZ TRANSITION (LINDY2.MYERZ): From over STL VORTAC via STL R-184 to MYERZ INT.

VICHY TRANSITION (LINDY2.VIH): From over STL VORTAC via STL R-229 to KLAIR INT, then via VIH R-053 to VIH VOR/DME.

WALNUT RIDGE TRANSITION (LINDY2.ARG): From over STL VORTAC via STL R-184 to MYERZ INT, then via ARG R-008 to ARG VORTAC.

LINDBERGH TWO DEPARTURE