

# GPS RWY 32R

BELLEVILLE/SCOTT AFB/MIDAMERICA (BLV)

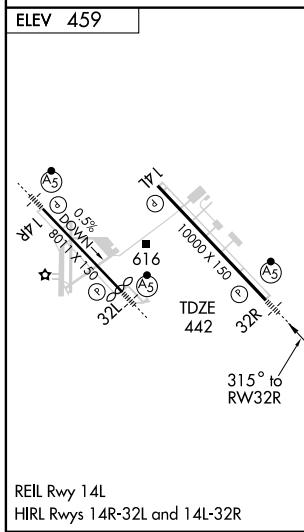
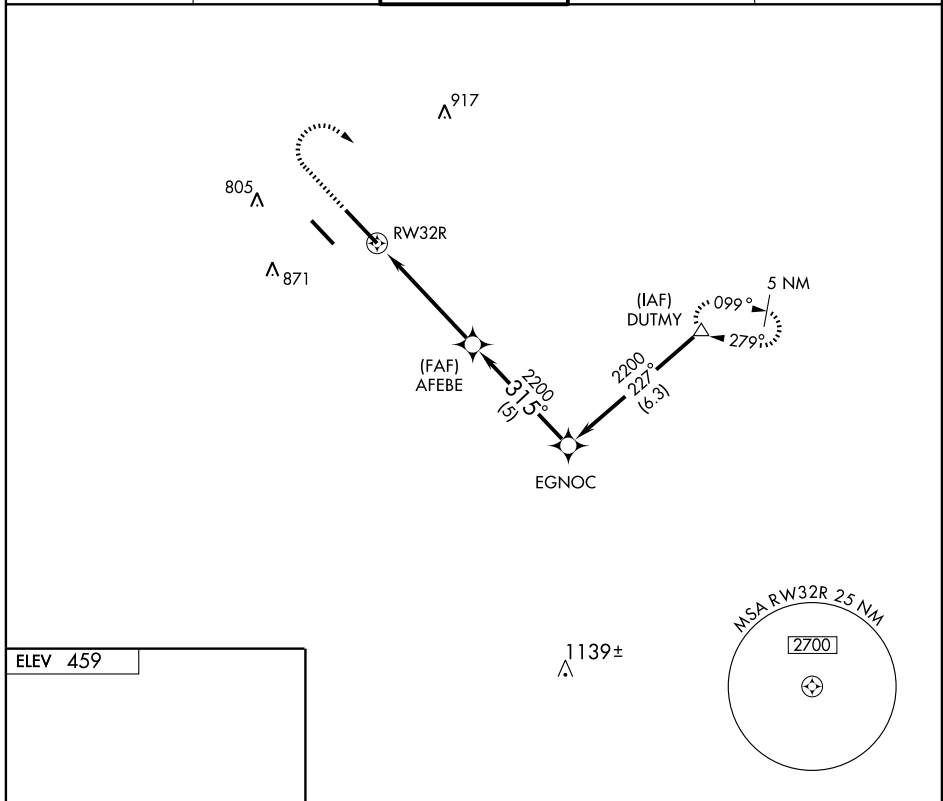
APP CRS <b>315°</b>	Rwy Idg <b>10000</b>
	TDZE <b>442</b>
	Apt Elev <b>459</b>

**NA** Procedure not authorized when control tower closed.  
Inoperative table does not apply to S-32R Cat. D



**MISSED APPROACH:** Climb to 1500 then climbing right turn to 2000 direct DUTMY WP and hold.

ATIS ★ <b>128.7 256.7</b>	ST LOUIS APP CON <b>125.2 281.5</b>	SCOTT TOWER <b>128.25 253.5</b>	GND CON <b>119.2 275.8</b>	CLNC DEL <b>119.875 263.025</b>
------------------------------	--	------------------------------------	-------------------------------	------------------------------------



1500	2000	DUTMY	Procedure Turn NA	
			AFEBE	EGNOC
RWY32R			315°	2200
0.8		4.2 NM	5 NM	
CATEGORY	A	B	C	D
S-32R	780-1/2 338 (400-1/2)		780-1 338 (400-1)	
CIRCLING	1000-1 541 (600-1)		1060-1 3/4 601 (700-1 3/4)	1240-2 1/2 781 (800-2 1/2)

VGSI and descent angles not coincident.

# GPS RWY 32R

EC-3, 22 OCT 2009 to 19 NOV 2009

EC-3, 22 OCT 2009 to 19 NOV 2009