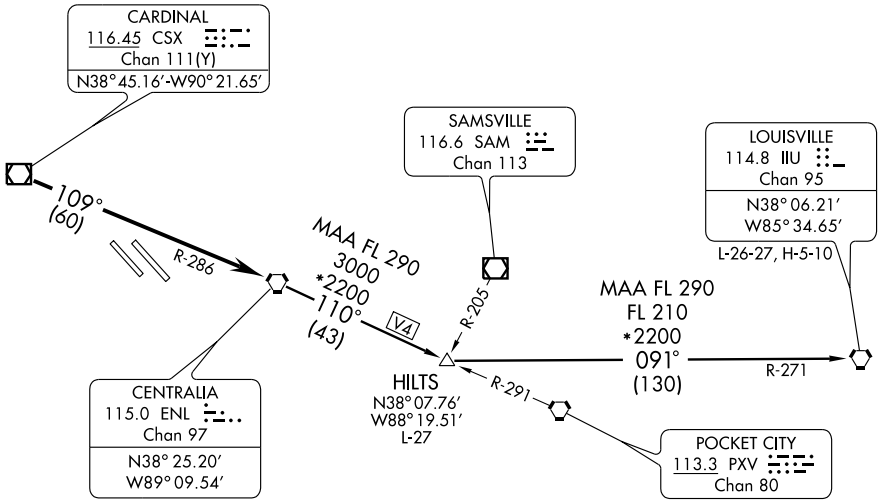


ATIS ★
 128.7 256.7
 CLNC DEL
 119.875 263.025
 GND CON
 119.2 275.8
 SCOTT TOWER
 128.25 253.5
 ST LOUIS DEP CON
 125.2 281.5



EC-3, 22 OCT 2009 to 19 NOV 2009

EC-3, 22 OCT 2009 to 19 NOV 2009

NOTE: For Turbojets only.
 NOTE: Chart not to scale.

DEPARTURE ROUTE DESCRIPTION

Fly assigned heading for vector to appropriate route. From over CSX VOR/DME via CSX R-109 and ENL R-286 to ENL VORTAC. Then via (transition) or (assigned route). Departures climb and maintain 2500 feet or assigned altitude. Expect clearance to filed altitude 10 minutes after departure.

HILTS TRANSITION (BLUES2.HILTS): From over ENL VORTAC via ENL R-110 to HILTS INT.

LOUISVILLE TRANSITION (BLUES2.IIU): From over ENL VORTAC via ENL R-110 to HILTS INT, then via IIU R-271 to IIU VORTAC.