

WAAS CH <b>86223</b> W34A	APP CRS <b>340°</b>	Rwy Idg TDZE <b>170</b> Apt Elev <b>170</b>	<b>6701</b>
---------------------------------	------------------------	---	-------------

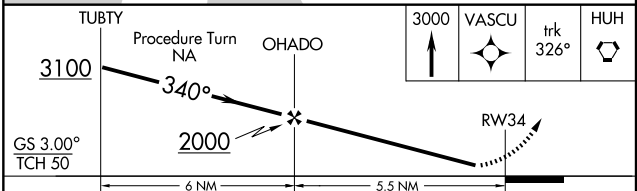
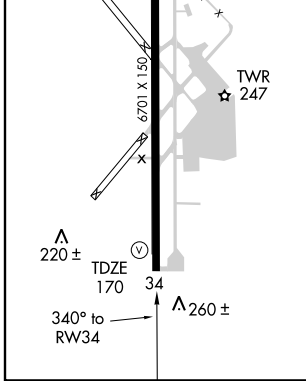
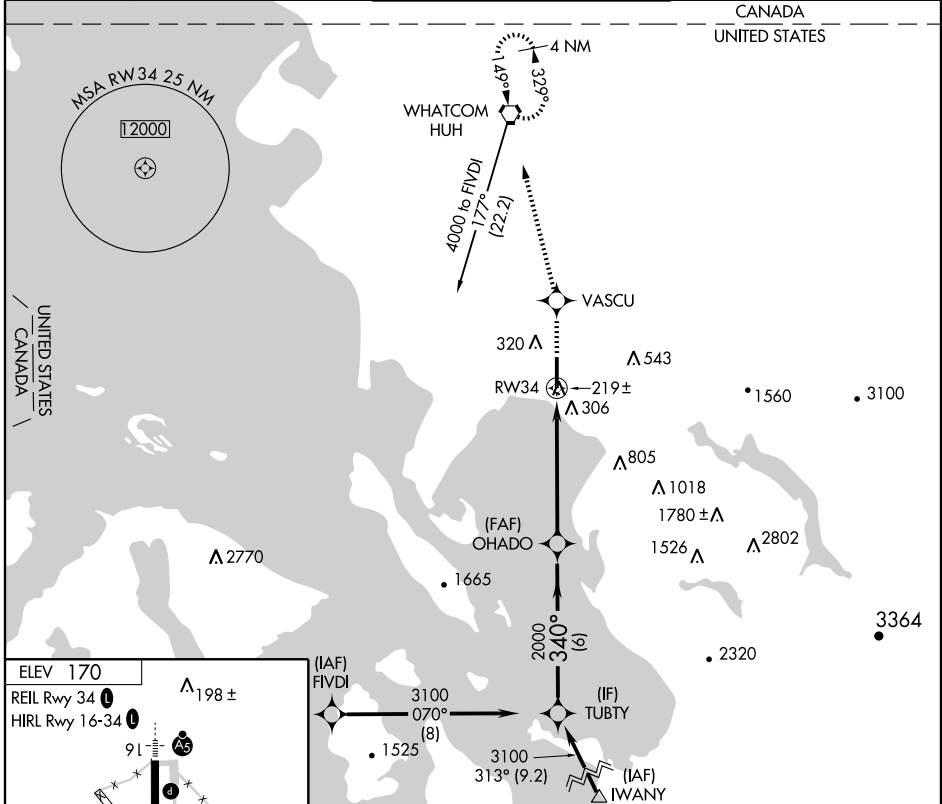
# RNAV (GPS) RWY 34

BELLINGHAM INTL (BLI)

**▼** DME/DME RNP-0.3 NA. Visibility reduction by helicopters NA.  
For uncompensated Baro-VNAV systems, LNAV/VNAV NA  
below -15°C (5°F) or above 48°C (118°F).

MISSED APPROACH: Climb to 3000 direct VASCU  
and via 326° track to HUH VORTAC and hold,  
continue climb-in-hold to 3000.

ATIS <b>134.45</b>	VICTORIA TERMINAL APP CON <b>132.7 290.8</b>	BELLINGHAM TOWER* <b>124.9</b> (CTAF) <b>379.3</b>	GND CON <b>127.4 379.3</b>	UNICOM <b>122.95</b>
-----------------------	---	---	-------------------------------	-------------------------



CATEGORY	A	B	C	D
LPV DA	439-1		269 (300-1)	
LNAV/ VNAV DA	592-1½		422 (500-1½)	
LNAV MDA	560-1		390 (400-1)	
CIRCLING	620-1	450 (500-1)	620-1½ 450 (500-1½)	720-2 550 (600-2)

NW-1, 22 OCT 2009 to 19 NOV 2009

NW-1, 22 OCT 2009 to 19 NOV 2009