

# RNAV (GPS) RWY 16

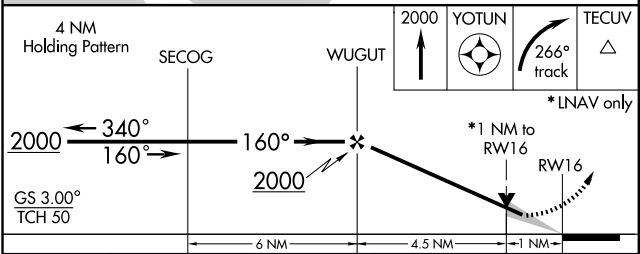
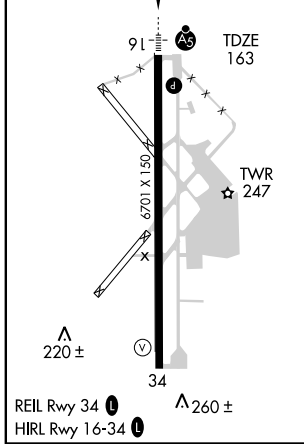
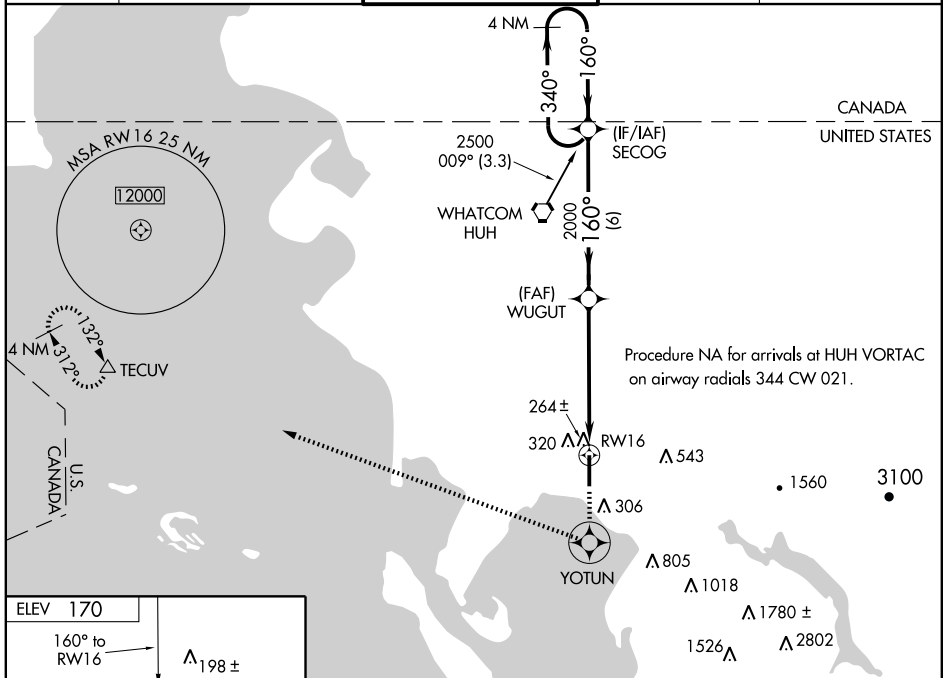
BELLINGHAM INTL (BLI)

WAAS CH <b>45999</b> <b>W16A</b>	APP CRS <b>160°</b>	Rwy Idg TDZE <b>163</b> Apt Elev <b>170</b>	<b>6701</b>
--	------------------------	---	-------------

▼ For inoperative MALS, increase LPV all Cats visibility to RVR 5000. Increase LNAV Cat D visibility to RVR 6000. For uncompensated Baro-VNAV systems, LNAV/VNAV NA below -1.5°C (5°F) or above 48°C (118°F). DME/DME RNP -0.3 NA. Baro-VNAV and VDP NA when using Friday Harbor altimeter setting. If local altimeter setting not received, use Friday Harbor altimeter setting and increase all DA/MDAs 80 feet.

MALS  
MISSED APPROACH: Climb to 2000 direct YOTUN and right turn via 266° track to TECUV and hold.

ATIS <b>134.45</b>	VICTORIA TERMINAL APP CON <b>132.7 290.8</b>	BELLINGHAM TOWER* <b>124.9 (CTAF) 379.3</b>	GND CON <b>127.4 379.3</b>	UNICOM <b>122.95</b>
-----------------------	---	--	-------------------------------	-------------------------



CATEGORY	A	B	C	D
LPV DA		442/24	279 (300-½)	
LNAV/VNAV DA		554/40	391 (400-¾)	
LNAV MDA		520/24	357 (400-½)	520/50 357 (400-1)
CIRCLING	620-1	450 (500-1)	620-1½ 450 (500-1½)	720-2 550 (600-2)

NW-1, 22 OCT 2009 to 19 NOV 2009

NW-1, 22 OCT 2009 to 19 NOV 2009