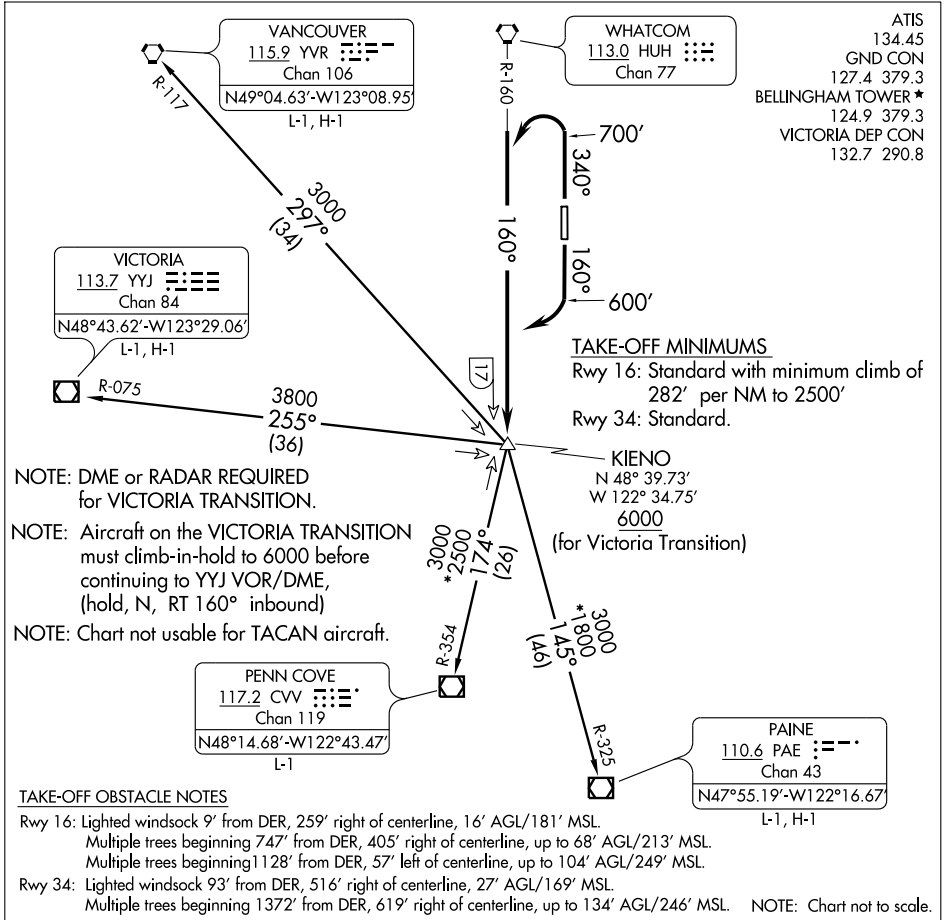


KIENO TWO DEPARTURE

SL-45 (FAA)

BELLINGHAM INTL (BLI)
BELLINGHAM, WASHINGTON

ATIS
134.45
GND CON
127.4 379.3
BELLINGHAM TOWER *
124.9 379.3
VICTORIA DEP CON
132.7 290.8



NW-1, 22 OCT 2009 to 19 NOV 2009

NW-1, 22 OCT 2009 to 19 NOV 2009

DEPARTURE ROUTE DESCRIPTION

TAKE-OFF RUNWAY 16: Climb heading 160° to 600', then climbing right turn to intercept HUH R-160 to KIENO INT, Thence....

TAKE-OFF RUNWAY 34: Climb heading 340° to 700', then climbing left turn to intercept HUH R-160 to KIENO INT. Thence....

....Maintain 3000 via assigned transition, expect requested altitude within 10 minutes.

PAINE TRANSITION (KIENO2.PAE): From over KIENO INT via PAE R-325 to PAE VOR/DME.

PENN COVE TRANSITION (KIENO2.CVV): From over KIENO INT via CVV R-354 to CVV VOR/DME.

VANCOUVER TRANSITION (KIENO2.YVR): From over KIENO INT via YVR R-117 to YVR VORTAC.

VICTORIA TRANSITION (KIENO2.YYJ): From over KIENO INT via YYJ R-075 to YYJ VOR/DME.

KIENO TWO DEPARTURE