

BEAUMONT, TEXAS

AL-42 (FAA)

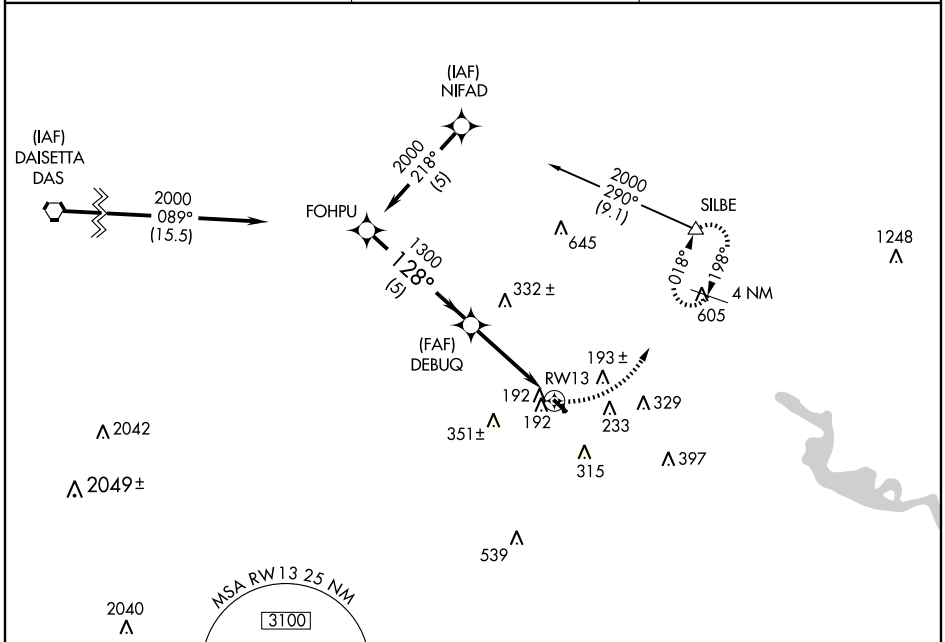
RNAV (GPS) RWY 13

BEAUMONT MUNI (BMT)

APP CRS 128°	Rwy Idg 3668 TDZE 31 Apt Elev 32
------------------------	---

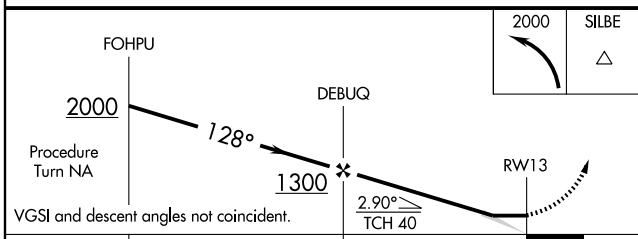
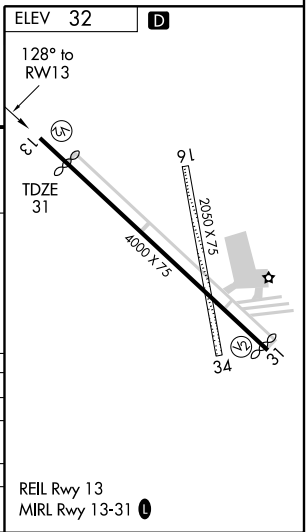
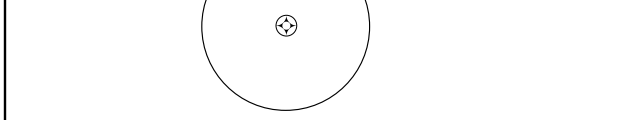
▽ Use Beaumont-Port Arthur, TX (Southeast Texas Rgnl) altimeter setting.
△ NA Circling NA Rwy 16-34. DME/DME RNP-0.3 NA. MISSED APPROACH: Climbing left turn to 2000 direct SILBE and hold.

HOUSTON APP CON 121.3 377.1	CLNC DEL 121.75	UNICOM 123.0 (CTAF)
---------------------------------------	---------------------------	-------------------------------



SC-5, 22 OCT 2009 to 19 NOV 2009

SC-5, 22 OCT 2009 to 19 NOV 2009



	5 NM		4 NM	
CATEGORY	A	B	C	D
GLS PA DA	NA			
LNAV/VNAV DA	NA			
LNAV MDA	540-1	509 (600-1)	540-1½	509 (600-1½)
CIRCLING	580-1	548 (600-1)	620-1½ 588 (600-1½)	720-2¼ 688 (700-2¼)

BEAUMONT, TEXAS
Orig-B 09015

30°04'N-94°13'W

RNAV (GPS) RWY 13

BEAUMONT MUNI (BMT)

REIL Rwy 13
MIRL Rwy 13-31