

# VOR or TACAN or GPS RWY 31

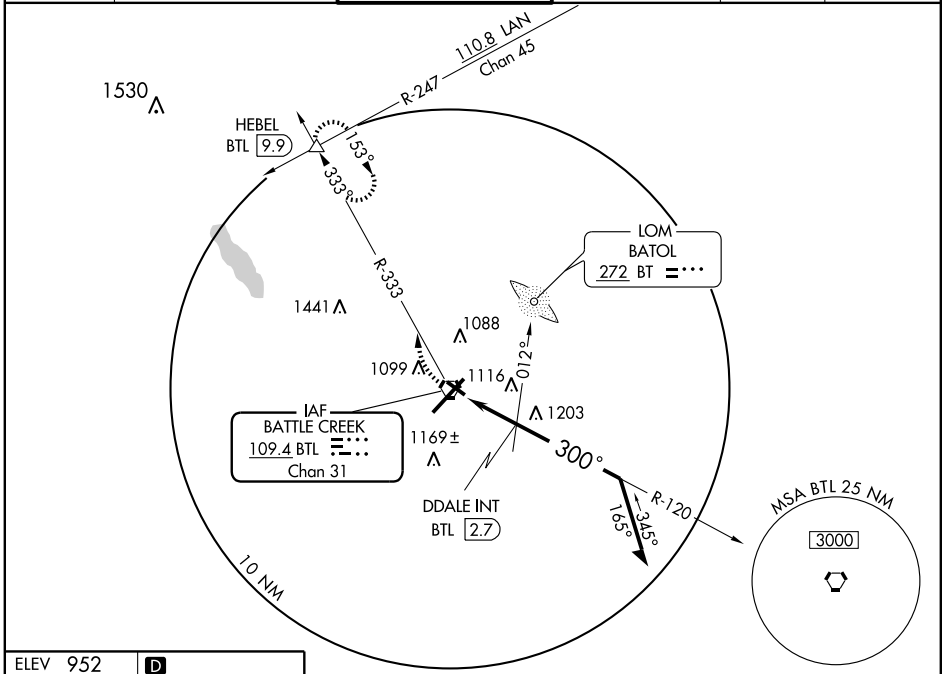
BATTLE CREEK / W.K. KELLOGG (BTL)

VORTAC BTL <b>109.4</b> Chan 31	APP CRS <b>300°</b>	Rwy Idg TDZE Apt Elev	<b>4835</b> <b>930</b> <b>952</b>
---------------------------------------	------------------------	-----------------------------	---

**⚠** When control tower closed, except for operators with approved weather reporting service, use Grand Rapids altimeter setting and increase all MDAs 160 feet and all visibilities ¼ mile.  
**⚠** ASR Air carrier landing visibility reduction for local conditions not authorized.

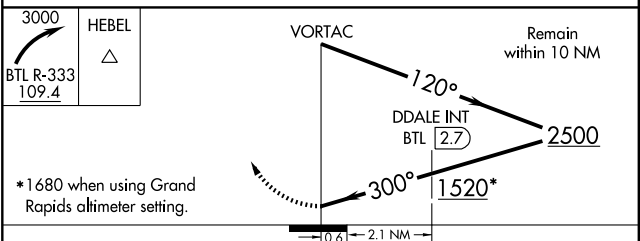
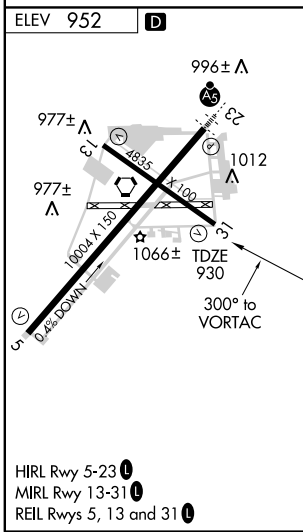
**MISSED APPROACH:** Climbing right turn to 3000 via BTL R-333 to HEBEL Int/BTL 9.9 DME and hold.

ATIS <b>128.325</b>	KALAMAZOO APP CON ★ <b>119.2 340.9</b>	BATTLE CREEK TOWER ★ <b>126.825 239.025</b>	GND CON <b>121.7 256.875</b>	UNICOM <b>122.95</b>	CTAF <b>126.825</b> <b>0</b>
------------------------	---	--	---------------------------------	-------------------------	---------------------------------



EC-1, 22 OCT 2009 to 19 NOV 2009

EC-1, 22 OCT 2009 to 19 NOV 2009



CATEGORY	A	B	C	D
S-31	1520-1	590 (600-1)	1520-1½ 590 (600-1½)	1520-1¾ 590 (600-1¾)
CIRCLING	1520-1	568 (600-1)	1520-1½ 568 (600-1½)	1520-2 568 (600-2)
DDALE MINIMUMS				
S-31	1380-1	450 (500-1)	1380-1¼ 450 (500-1¼)	1380-1½ 450 (500-1½)
CIRCLING	1420-1 468 (500-1)	1440-1 488 (500-1)	1480-1½ 528 (600-1½)	1520-2 568 (600-2)

# VOR or TACAN or GPS RWY 31