

# VOR or TACAN RWY 5

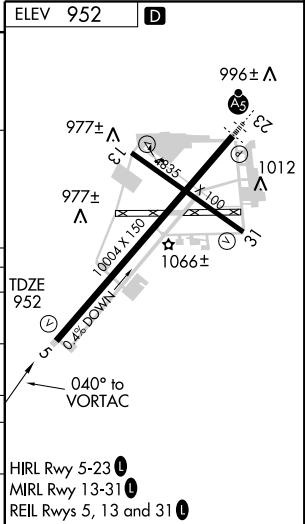
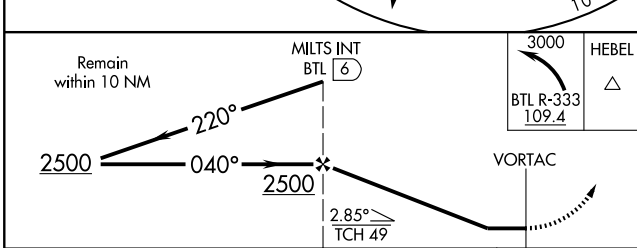
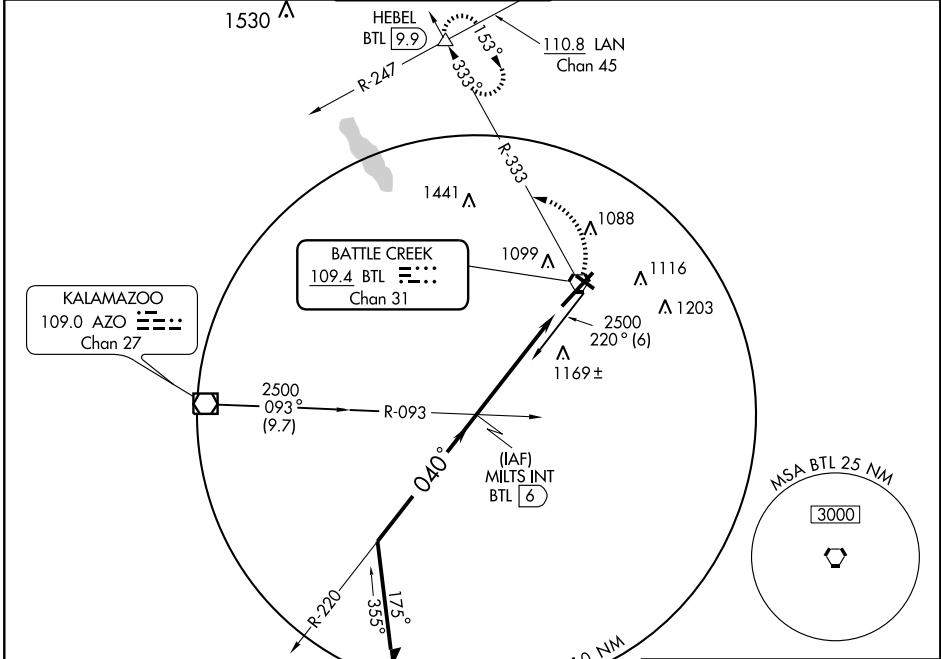
BATTLE CREEK / W.K. KELLOGG (BTL)

VORTAC BTL <b>109.4</b> Chan 31	APP CRS <b>040°</b>	Rwy Ldg TDZE Apt Elev	<b>10003</b> <b>952</b> <b>952</b>
---------------------------------------	------------------------	-----------------------------	--

**ASR** When control tower closed, except for operators with approved weather reporting service, use Grand Rapids altimeter setting.

MISSED APPROACH: Climbing left turn to 3000 via BTL R-333 to HEBEL Int/BTL 9.9 DME and hold.

ATIS <b>128.325</b>	KALAMAZOO APP CON ★ <b>119.2 340.9</b>	BATTLE CREEK TOWER ★ <b>126.825 239.025</b>	GND CON <b>121.7 256.875</b>	UNICOM <b>122.95</b>	CTAF <b>126.825</b> <b>0</b>
------------------------	---	--	---------------------------------	-------------------------	---------------------------------



CATEGORY	A	B	C	D
S-5	1400-1	448 (500-1)	1400-1½ 448 (500-1¼)	1400-1½ 448 (500-1½)
CIRCLING	1420-1 468 (500-1)	1440-1 488 (500-1)	1480-1½ 528 (600-1½)	1520-2 568 (600-2)
GRAND RAPIDS ALTIMETER SETTING MINIMUMS				
S-5	1560-1	608 (700-1)	1560-1¾ 608 (700-1¾)	1560-2 608 (700-2)
CIRCLING	1580-1 628 (700-1)	1600-1 648 (700-1)	1640-2 688 (700-2)	1680-2¼ 728 (800-2¼)

EC-1, 22 OCT 2009 to 19 NOV 2009

EC-1, 22 OCT 2009 to 19 NOV 2009