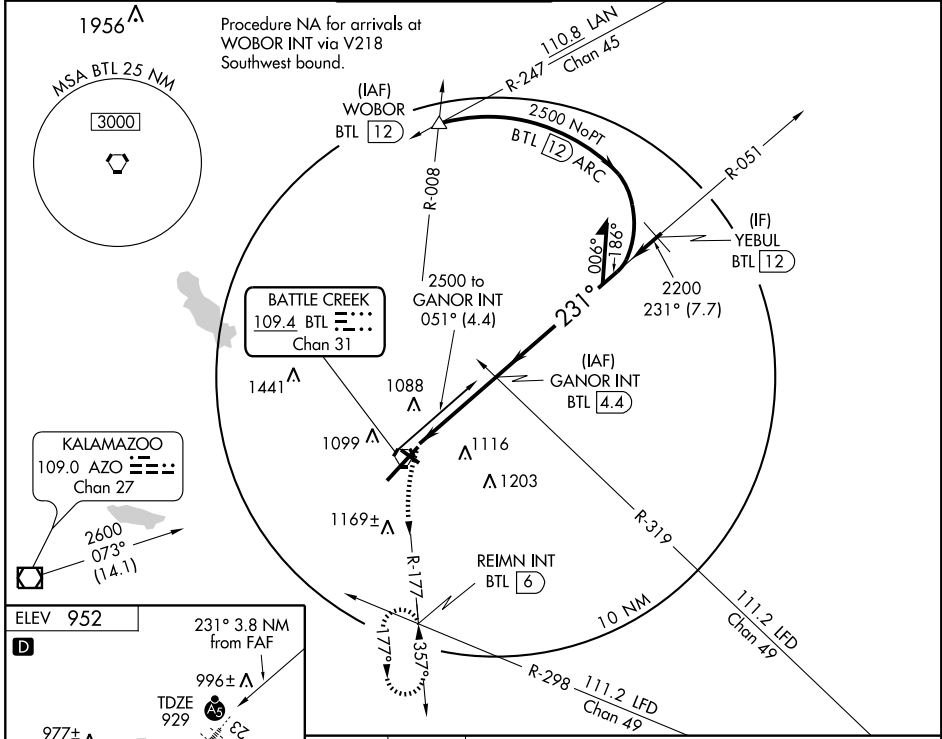


VORTAC BTL 109.4 Chan 31	APP CRS 231°	Rwy Idg 10003 TDZE 929 Apt Elev 952
---------------------------------------	------------------------	--

VOR RWY 23
BATTLE CREEK / W.K. KELLOGG (BTL)

<p>For inoperative MALSRS, increase S-23 Cats A/B visibility to RVR 5000. Visibility reduction by helicopters NA. When local altimeter setting not received, use Grand Rapids altimeter setting and increase all MDA 120 feet, increase Cat C visibility to RVR 5000, Cat D visibility to RVR 6000, and Circling Cat C and D visibility ¼ mile. VDP NA when using Grand Rapids altimeter setting.</p>	<p>MALSRS</p>	<p>MISSED APPROACH: Climbing left turn to 3000 via BTL VORTAC R-177 to REIMN INT/6 DME and hold, continue climb-in-hold to 3000.</p>

ATIS 128.325	KALAMAZOO APP CON* 119.2 340.9	BATTLE CREEK TOWER* 126.825 239.025	GND CON 121.7 256.875	UNICOM 122.95	CTAF 126.825
------------------------	--	--	---------------------------------	-------------------------	------------------------



ELEV 952

D

231° 3.8 NM from FAF

996± Δ

TDZE 929

977± Δ

977± Δ

1012 Δ

1066±

10004 X 150

0.4% DOWN

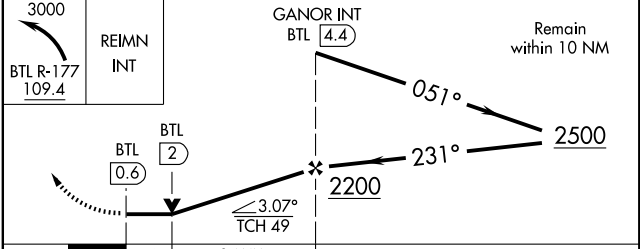
HIRL Rwy 5-23

MIRL Rwy 13-31

REIL Rwys 5, 13 and 31

FAF to MAP 3.8 NM

Knots	60	90	120	150	180
Min:Sec	3:48	2:32	1:54	1:31	1:16



CATEGORY	A	B	C	D
S-23	1400/40	471 (500-¾)		1400/50 471 (500-1)
CIRCLING	1420-1 468 (500-1)	1500-1 548 (600-1)	1500-1½ 548 (600-1½)	1520-2 568 (600-2)

EC-1, 22 OCT 2009 to 19 NOV 2009

EC-1, 22 OCT 2009 to 19 NOV 2009